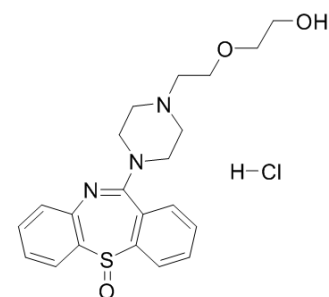


Quetiapine sulfoxide hydrochloride

Cat. No.:	HY-G0014B		
Molecular Formula:	C ₂₁ H ₂₆ ClN ₃ O ₃ S		
Molecular Weight:	435.97		
Target:	Drug Metabolite		
Pathway:	Metabolic Enzyme/Protease		
Storage:	Powder	-20°C	3 years
		4°C	2 years
	In solvent	-80°C	6 months
		-20°C	1 month



BIOLOGICAL ACTIVITY

Description	Quetiapine sulfoxide hydrochloride (Quetiapine S-oxide hydrochloride) is a main metabolite of Quetiapine. Quetiapine is a second-generation antipsychotic ^[1] .
In Vivo	The C _{max} value (mean±SD) is estimated for Quetiapine sulfoxide (77.3±32.4 ng/mL). The AUC _{last} value is estimated for Quetiapine sulfoxide (1,286±458 ng•h/mL). For Quetiapine sulfoxide, metabolic ratio decreases with time, from 119% on average 2 hours after dosing to 30% on average 72 hours after dosing ^[1] .

REFERENCES

[1]. Remmerie B, et al. Comparison of Capillary and Venous Drug Concentrations After Administration of a Single Dose of Risperidone, Paliperidone, Quetiapine, Olanzapine, or Aripiprazole. Clin Pharmacol Drug Dev. 2016 Nov;5(6):528-537.

Caution: Product has not been fully validated for medical applications. For research use only.

Tel: 609-228-6898

Fax: 609-228-5909

E-mail: tech@MedChemExpress.com

Address: 1 Deer Park Dr, Suite Q, Monmouth Junction, NJ 08852, USA