

File ..\2018\20180727\20180727\CPK2018-727-18033.D Tgt Mass (CHM):

Injection Date : 27 Jul 18 4:26 pm +0800 Seq. Line : 99

Sample Name : CPK2018-727-18033 Location : P2-A-03

Acq. Operator : SYSTEM Inj : 1

Spec. Reported : MS Integration Inj Volume : 1 ul

Acq. Method : D:\LCMS03\Data\2018\20180727\20180727\1-POS-3MIN.M

Analysis Method : D:\LCMS03\Data\2018\20180727\20180727\1-POS-3MIN.M

Catalog No : HY-N0001 Batch#18033

Method Info : Mobile Phase: A: water(0.01%TFA) B:ACN(0.01%TFA)

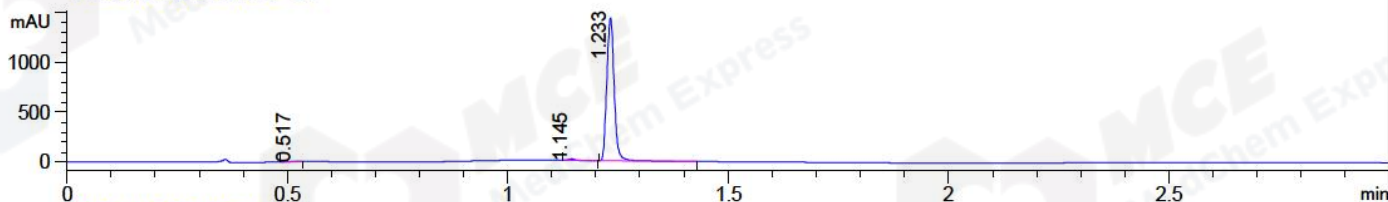
Gradient: 5% to 95%B within 1.3 min

Flow Rate :1.8ml/min

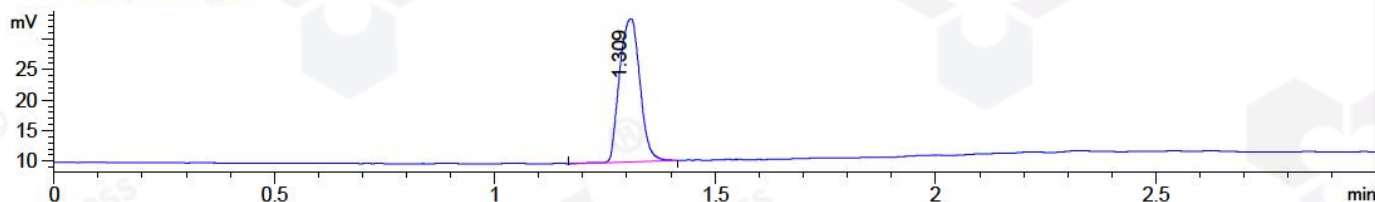
Column :SunFire C18, 4.6*50mm,3.5um A-RP-186

Oven Temperature : 45C

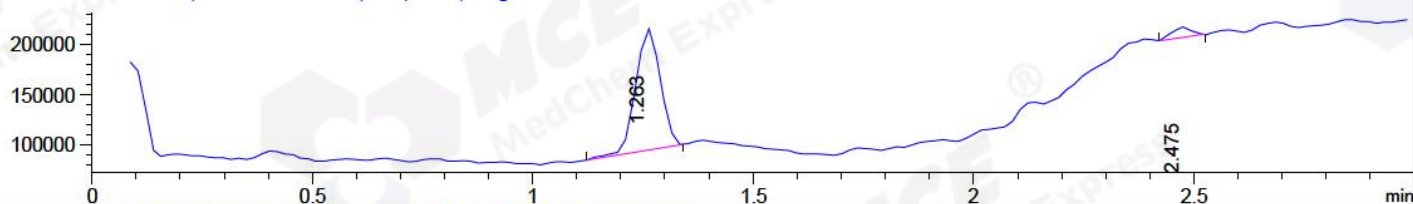
DAD1 A, Sig=214,4 Ref=off



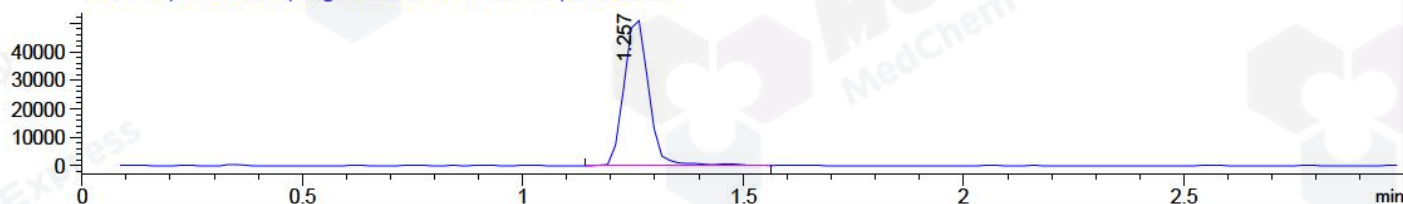
ELS1 A, ELSD Signal



MSD1 TIC, MS File ES-API, Pos, Scan, Frag: 70



Ion 291.3, MSD1 291.3, Target Mass 290.3 +H Positive, EIC=291.292



Integration Results for DAD1 A, Sig=214,4 Ref=off

RetTim	Width	Area	Height	Area%	MS (+)
0.52	0.02	2.50	2.07	0.15	157
1.15	0.02	14.31	12.76	0.85	233
1.23	0.02	1671.74	1431.03	99.00	291

Integration Results for ELS1 A, ELSD Signal

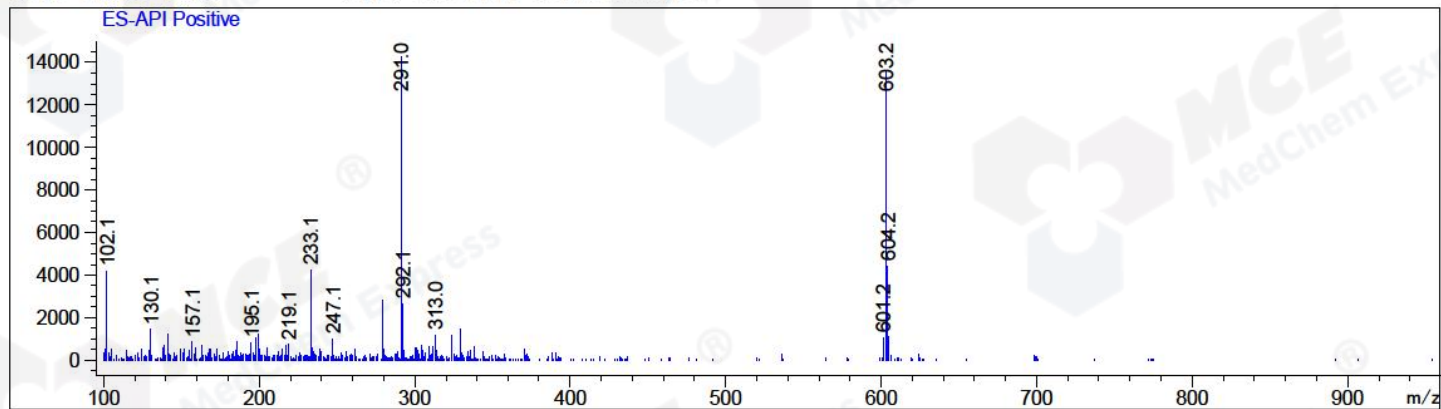
RetTim	Width	Area	Height	Area%	MS (+)
1.31	0.05	75.59	23.47	100.00	291

Integration Results for MSD1 TIC, MS File

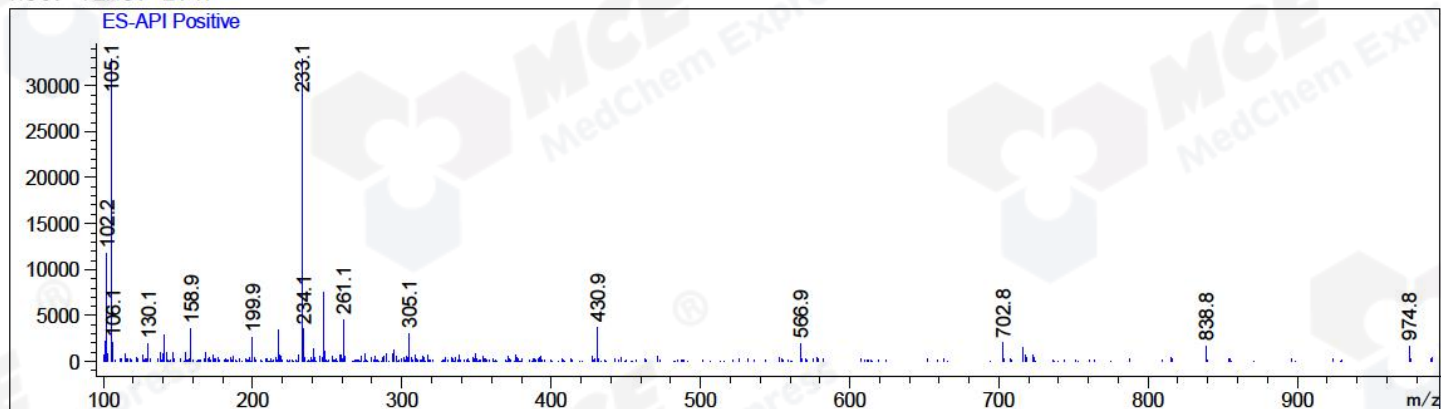
RetTim	Width	Area	Height	Area%	MS (+)
1.26	0.06	474476.03	120948.38	93.49	291
2.47	0.05	33058.43	10452.67	6.51	105

Ret. Time: 1.26

<<<< POSITIVE SPECTRA >>>>



Ret. Time: 2.47



*** End of Report ***