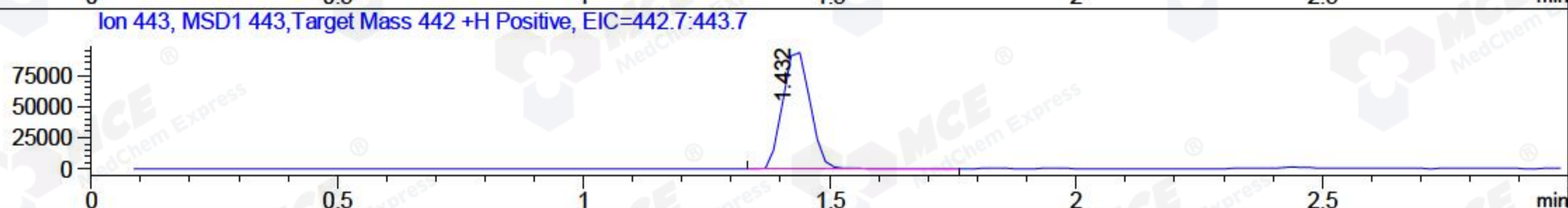
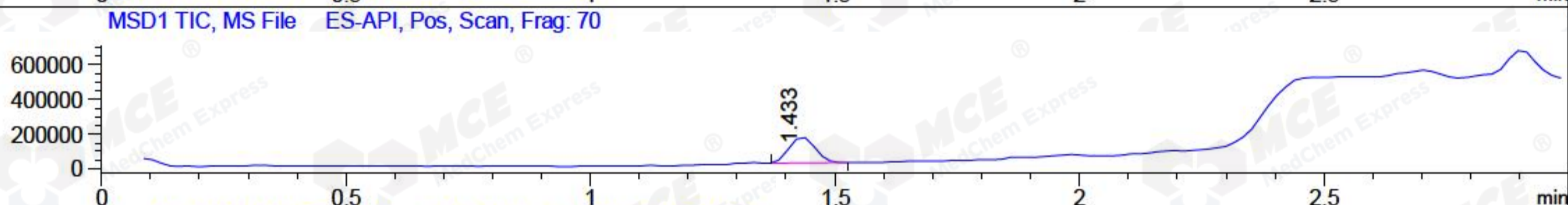
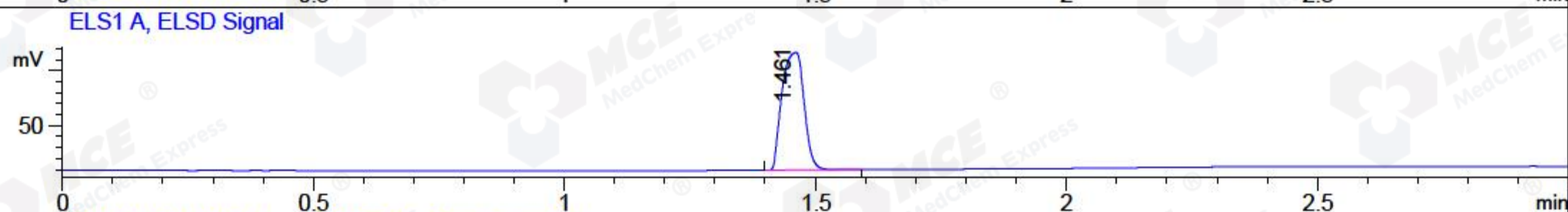
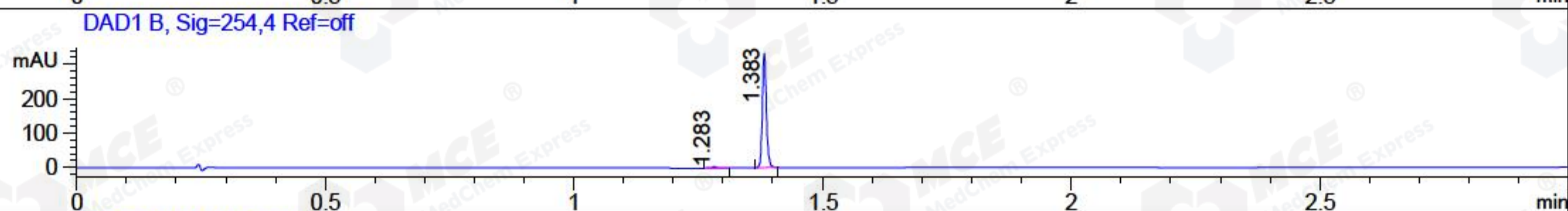
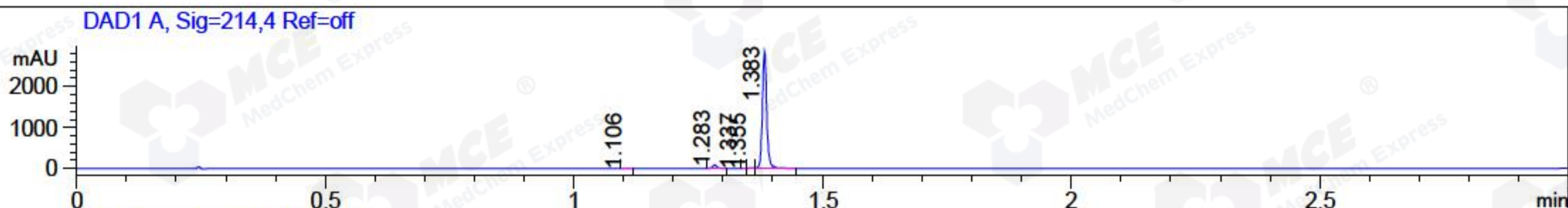


File ..3\Data\20171127\20171127\BIZ2017-N27-WYQ8.D Tgt Mass (CHM):  
 Injection Date : 27 Nov 17 6:31 pm +0800 Seq. Line : 118  
 Sample Name : BIZ2017-N27-WYQ8 Location : P2-B-03  
 Acq. Operator : SYSTEM Inj : 1  
 Spec. Reported : MS Integration Inj Volume : 1 ul  
 Acq. Method : D:\LCMS03\Data\20171127\20171127\1-POS-3MIN(1.2ML).M  
 Analysis Method : D:\LCMS03\Data\20171127\20171127\1-POS-3MIN(1.2ML).M  
 Catalog No : HY-N0002 Batch#27455  
 Method Info : Mobile Phase: A: water(0.01%TFA) B:ACN(0.01%TFA)  
 Gradient: 5% to 95%B within 1.3 min  
 Flow Rate : 1.2ml/min  
 Column : Poroshell 120 EC-C18, 3.0\*50mm, 2.7um A-RP-170  
 Oven Temperature : 45C



Integration Results for DAD1 A, Sig=214,4 Ref=off

RetTim	Width	Area	Height	Area%	MS (+)
1.11	0.01	1.01	1.18	0.06	ND
1.28	0.01	45.11	77.00	2.51	ND
1.34	0.01	0.31	0.01	0.02	ND
1.36	0.01	7.14	11.25	0.40	ND
1.38	0.01	1746.56	2852.93	97.02	443

Integration Results for DAD1 B, Sig=254,4 Ref=off

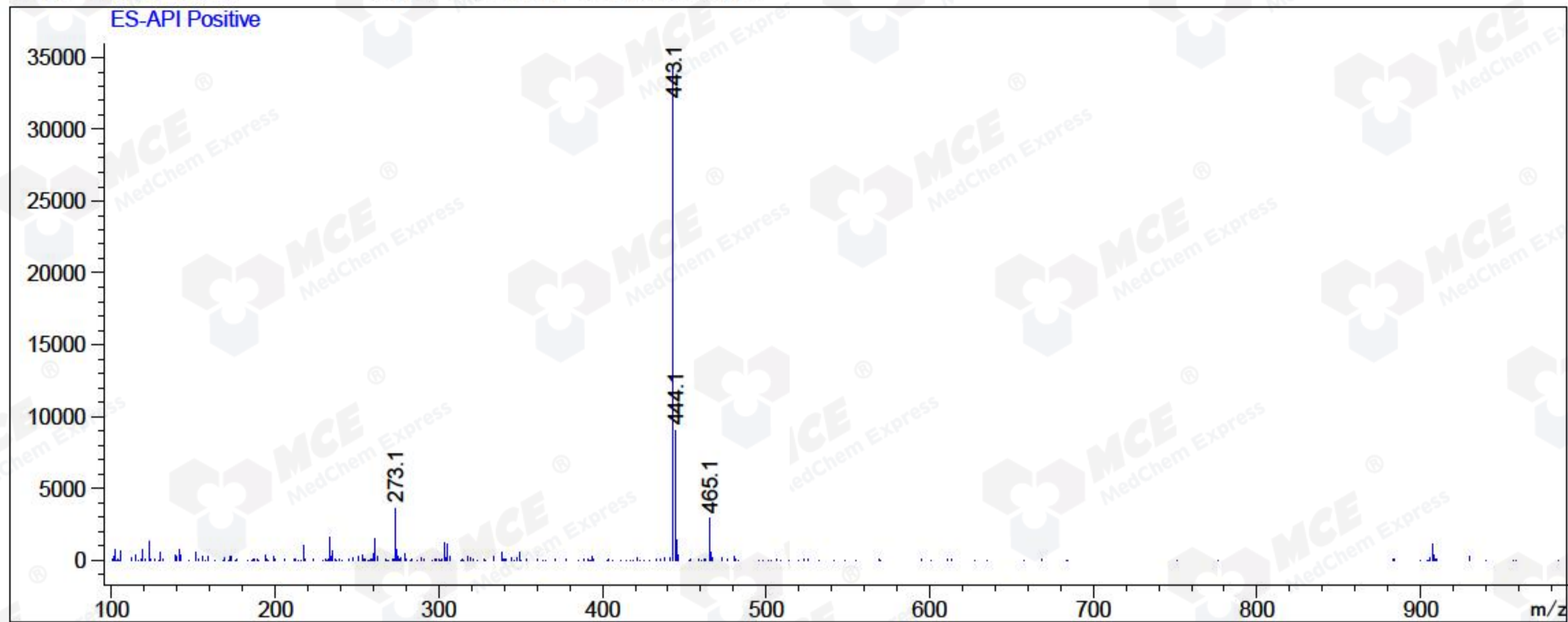
RetTim	Width	Area	Height	Area%	MS (+)
1.28	0.01	2.79	4.65	1.43	ND
1.38	0.01	191.74	336.64	98.57	443

Integration Results for MSD1 TIC, MS File

RetTim	Width	Area	Height	Area%	MS (+)
1.43	0.06	551094.13	150321.36	100.00	443

Ret. Time: 1.43

<<<< POSITIVE SPECTRA >>>>



\*\*\* End of Report \*\*\*