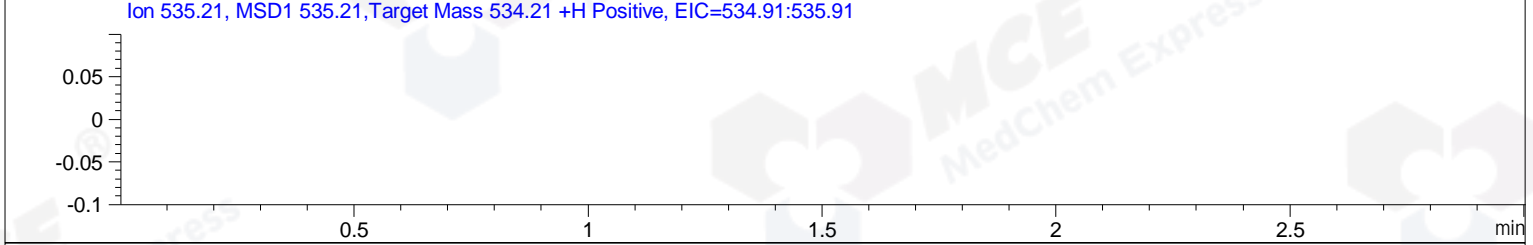
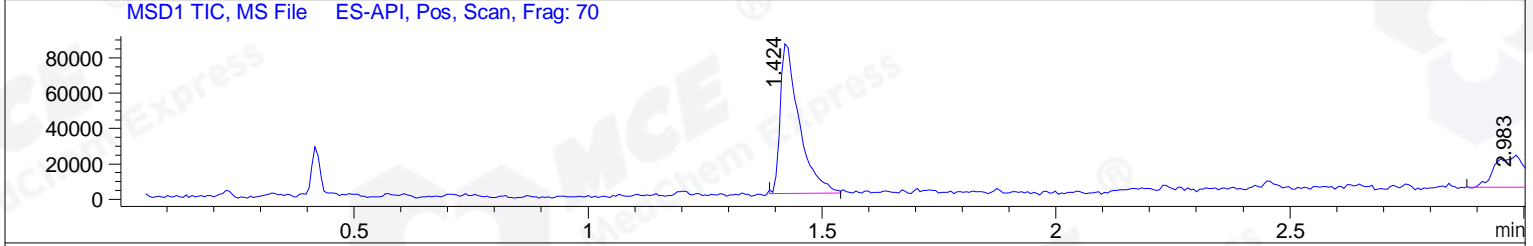
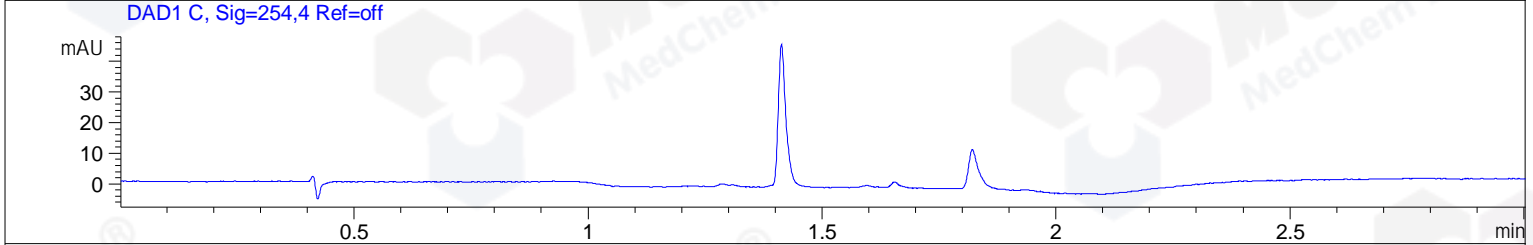
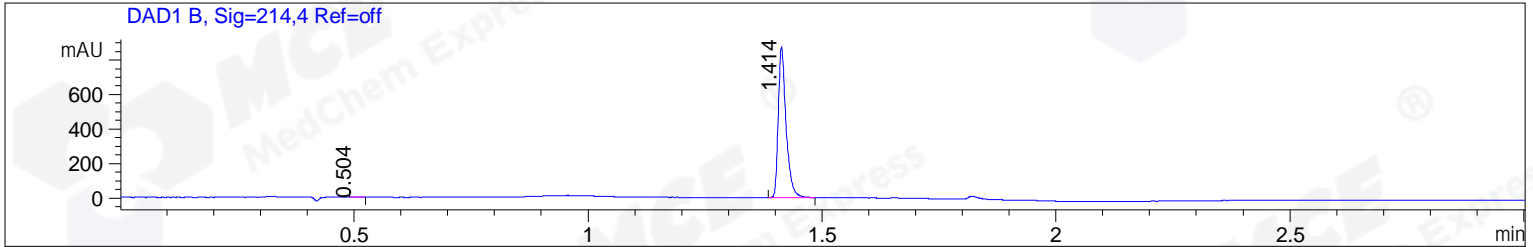


File ..1\DATA\2019\20191022\734\BIZ2019-021-WMX7.D Tgt Mass (CHM):
 Injection Date : 22 Oct 19 11:53 am +0800 Seq. Line : 36
 Sample Name : BIZ2019-021-WMX7 Location : P1-B-02
 Acq. Operator : ZJ_1432 Inj : 1
 Spec. Reported : MS Integration Inj Volume : 1 ul
 Acq. Method : D:\Chem32\1\data\2019\20191022\734\1-POS-3MIN.M
 Analysis Method : D:\CHEM32\1\DATA\2019\20191022\734\1-POS-3MIN.M
 Catalog No : HY-N0034 Batch# 48461
 Method Info : Mobile Phase: A: water(0.01%TFA) B:ACN(0.01%TFA)
 Gradient: 5% to 95%B within 1.3 min
 Flow Rate :1.8ml/min
 Column :SunFire C18, 4.6*50mm,3.5um A-RP-433
 Oven Temperature : 45



Integration Results for DAD1 B, Sig=214,4 Ref=off

| RetTim | Width | Area | Height | Area% | MS (+) |
|--------|-------|---------|--------|-------|--------|
| 0.50 | 0.02 | 1.76 | 1.73 | 0.17 | ND |
| 1.41 | 0.02 | 1009.72 | 902.40 | 99.83 | 373 |

Integration Results for DAD1 C, Sig=254,4 Ref=off

| RetTim | Width | Area | Height | Area% | MS (+) |
|--------|-------|------|--------|-------|--------|
|--------|-------|------|--------|-------|--------|

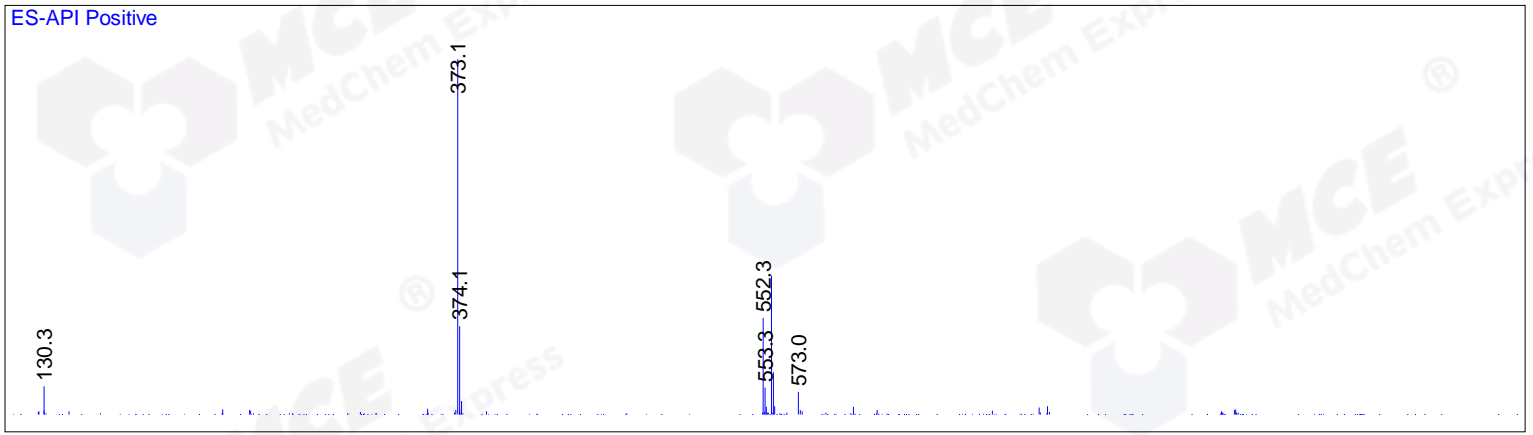
Integration Results for MSD1 TIC, MS File

| RetTim | Width | Area | Height | Area% | MS (+) |
|--------|-------|-----------|----------|-------|--------|
| 1.42 | 0.04 | 238837.41 | 86668.05 | 77.51 | 373 |
| 2.98 | 0.05 | 69298.63 | 18032.09 | 22.49 | 474 |

Ret. Time: 1.42

<<<< POSITIVE SPECTRA >>>>

ES-API Positive



Ret. Time: 2.98

ES-API Positive

