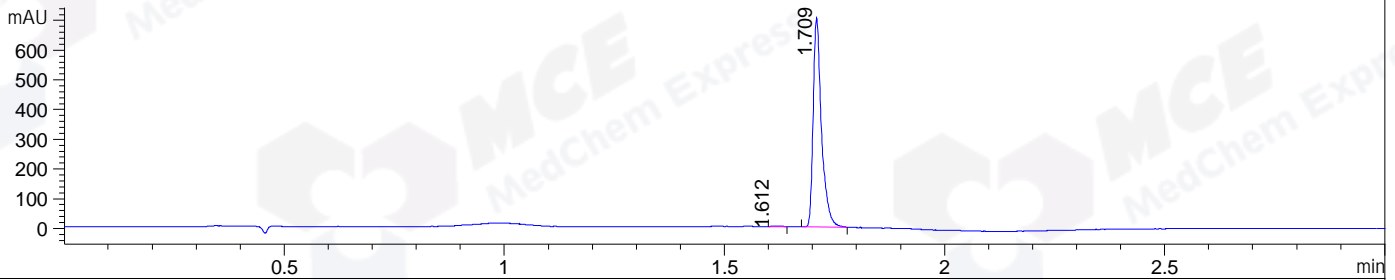
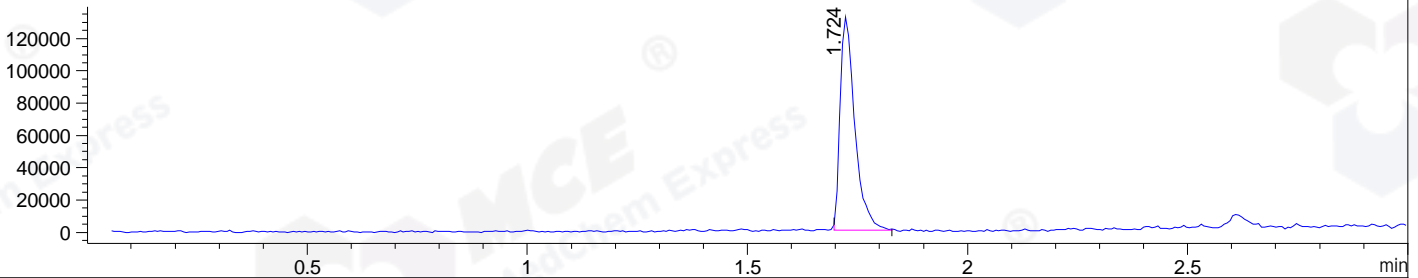


File ..\DATA\2019\20191127\778\BIZ2019-N26-SCH31.D Tgt Mass (CHM):
 Injection Date : 27 Nov 19 11:35 am +0800 Seq. Line : 35
 Sample Name : BIZ2019-N26-SCH31 Location : P1-A-03
 Acq. Operator : ZJ_1432 Inj : 1
 Spec. Reported : MS Integration Inj Volume : 1 ul
 Acq. Method : D:\Chem32\1\data\2019\20191127\778\1-POS-3MIN.M
 Analysis Method : D:\CHEM32\1\DATA\2019\20191127\778\1-POS-3MIN.M
 Catalog No : HY-N0035 Batch#56757
 Method Info : Mobile Phase: A: water(0.01%TFA) B:ACN(0.01%TFA)
 Gradient: 5% to 95%B within 1.3 min
 Flow Rate :1.8ml/min
 Column :SunFire C18, 4.6*50mm,3.5um A-RP-433
 Oven Temperature : 45

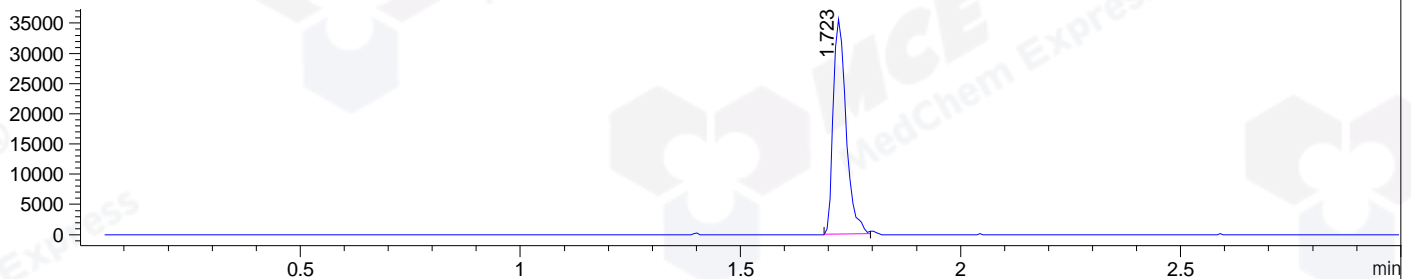
DAD1 B, Sig=214,4 Ref=off



MSD1 TIC, MS File ES-API, Pos, Scan, Frag: 70



Ion 373, MSD1 373, Target Mass 372 +H Positive, EIC=372.7:373.7



Integration Results for DAD1 B, Sig=214,4 Ref=off

RetTim	Width	Area	Height	Area%	MS (+)
1.61	0.02	2.75	1.88	0.30	ND
1.71	0.02	924.70	703.17	99.70	373

Integration Results for MSD1 TIC, MS File

RetTim	Width	Area	Height	Area%	MS (+)
1.72	0.03	305802.81	131872.94	100.00	373

Ret. Time: 1.72

<<<< POSITIVE SPECTRA >>>>

ES-API Positive

