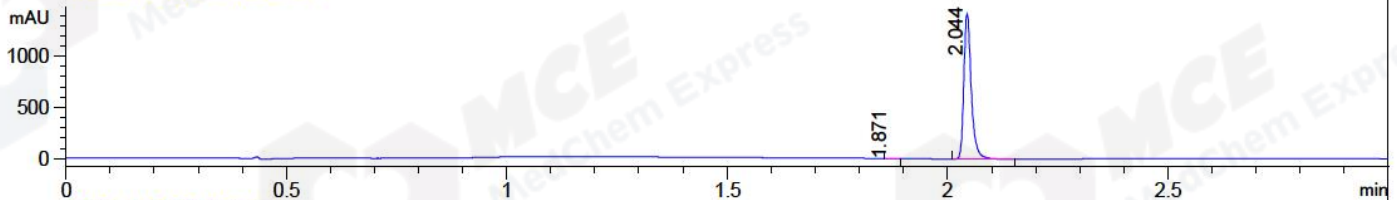
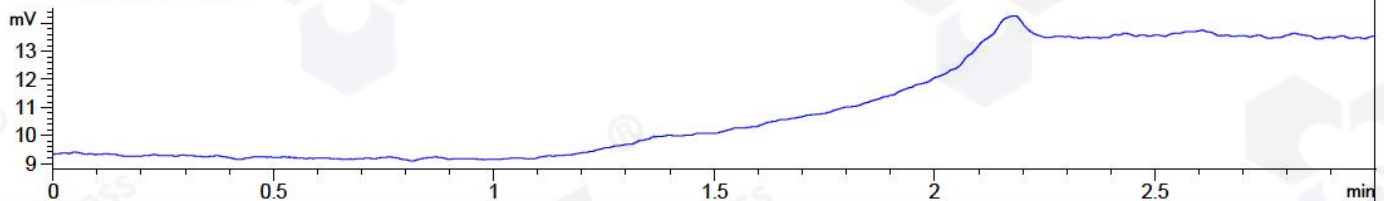


File ..\2018\20180409\20180409\CPK2018-408-16937.D Tgt Mass (CHM):
 Injection Date : 9 Apr 18 7:24 pm +0800 Seq. Line : 122
 Sample Name : CPK2018-408-16937 Location : P2-E-03
 Acq. Operator : SYSTEM Inj : 1
 Spec. Reported : MS Integration Inj Volume : 1 ul
 Acq. Method : D:\LCMS03\Data\2018\20180409\20180409\1-POS-3MIN.M
 Analysis Method : D:\LCMS03\Data\2018\20180409\20180409\1-POS-3MIN.M
 Catalog No : HY-N0038 Batch#16937
 Method Info : Mobile Phase: A: water(0.01%TFA) B:ACN(0.01%TFA)
 Gradient: 5% to 95%B within 1.3 min
 Flow Rate :1.8ml/min
 Column :SunFire C18, 4.6*50mm,3.5um A-RP-186
 Oven Temperature : 45C

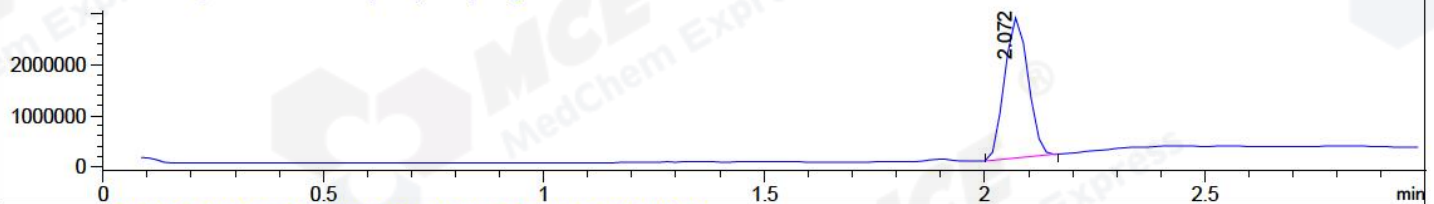
DAD1 A, Sig=214,4 Ref=off



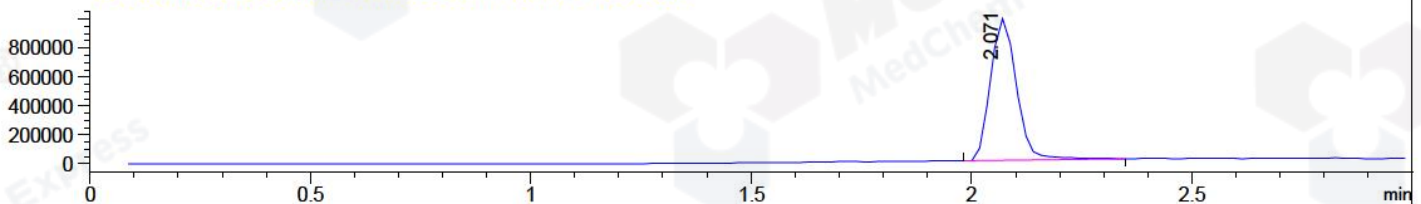
ELS1 A, ELSD Signal



MSD1 TIC, MS File ES-API, Pos, Scan, Frag: 70



Ion 233.3, MSD1 233.3, Target Mass 232.3 +H Positive, EIC=233:234



Integration Results for DAD1 A, Sig=214,4 Ref=off

RetTim	Width	Area	Height	Area%	MS (+)
1.87	0.02	1.01	0.75	0.06	233
2.04	0.02	1655.34	1420.96	99.94	233

Integration Results for ELS1 A, ELSD Signal

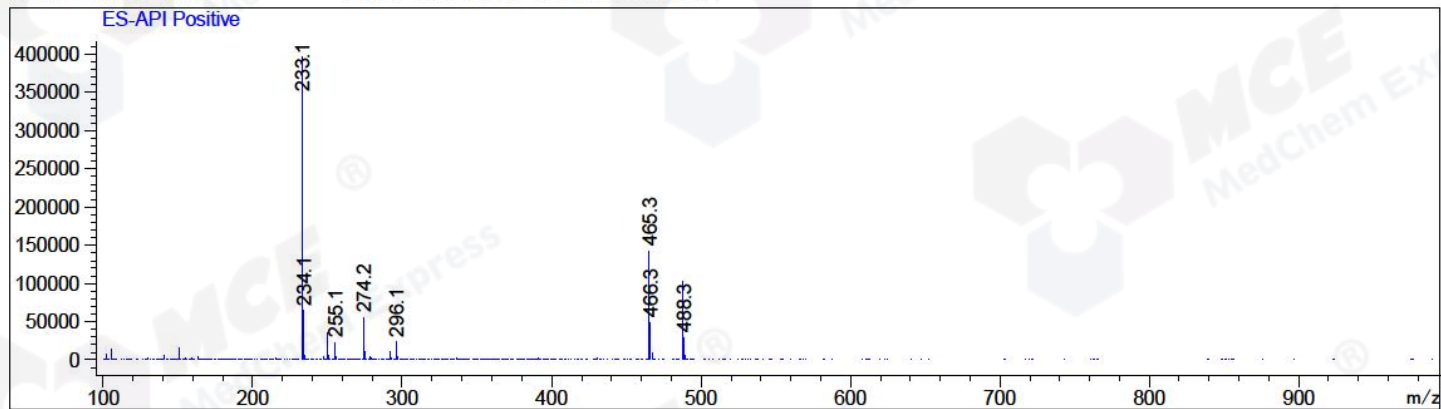
RetTim	Width	Area	Height	Area%	MS (+)
--------	-------	------	--------	-------	--------

Integration Results for MSD1 TIC, MS File

RetTim	Width	Area	Height	Area%	MS (+)
2.07	0.06	10157696.00	2754005.75	100.00	233

Ret. Time: 2.07

<<<< POSITIVE SPECTRA >>>>



*** End of Report ***