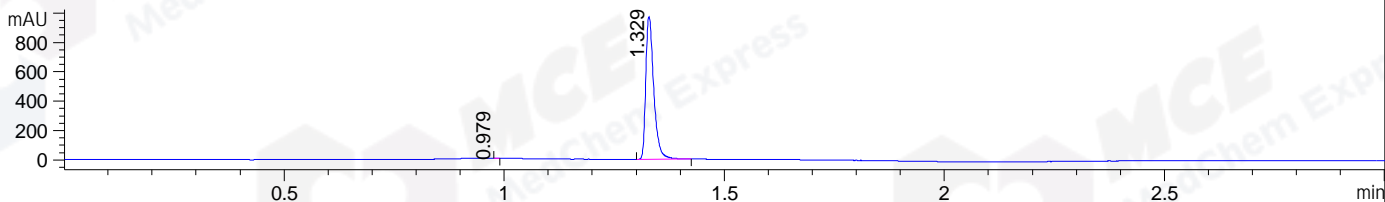
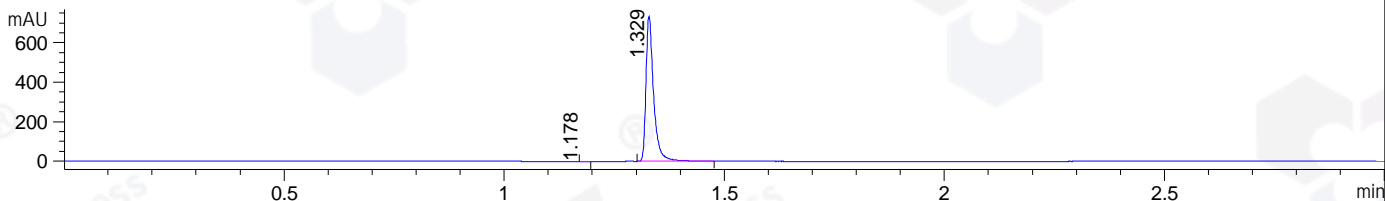


File ..\DATA\2019\20191111\758\CPK2019-N07-23446.D Tgt Mass (CHM):
 Injection Date : 11 Nov 19 2:46 pm +0800 Seq. Line : 71
 Sample Name : CPK2019-N07-23446 Location : P1-D-02
 Acq. Operator : ZJ_1432 Inj : 1
 Spec. Reported : MS Integration Inj Volume : 1 ul
 Acq. Method : D:\Chem32\1\data\2019\20191111\758\1-POS-3MIN.M
 Analysis Method : D:\CHEM32\1\DATA\2019\20191111\758\1-POS-3MIN.M
 Catalog No : HY-N0058 Batch#23446
 Method Info : Mobile Phase: A: water(0.01%TFA) B:ACN(0.01%TFA)
 Gradient: 5% to 95%B within 1.3 min
 Flow Rate :1.8ml/min
 Column :SunFire C18, 4.6*50mm,3.5um A-RP-433
 Oven Temperature : 45

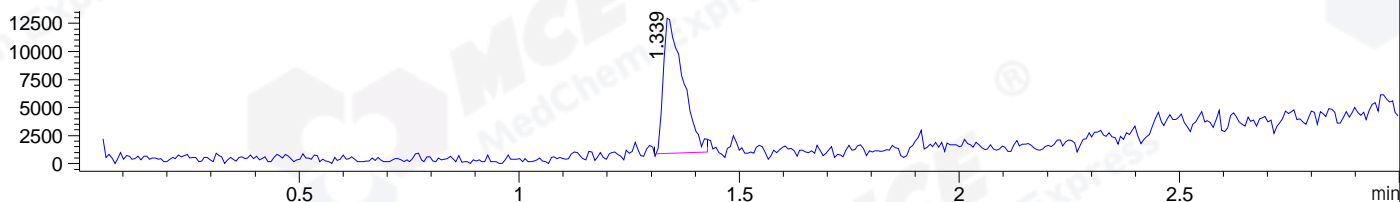
DAD1 B, Sig=214,4 Ref=off



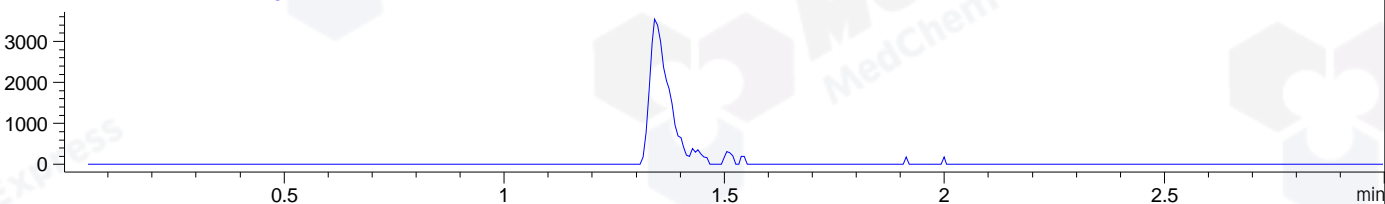
DAD1 C, Sig=254,4 Ref=off



MSD1 TIC, MS File ES-API, Pos, Scan, Frag: 70



Ion 517, MSD1 517, Target Mass 516 +H Positive, EIC=516.7:517.7



Integration Results for DAD1 B, Sig=214,4 Ref=off

RetTim	Width	Area	Height	Area%	MS (+)
0.98	0.01	0.20	0.40	0.02	ND
1.33	0.02	1226.69	972.44	99.98	499

Integration Results for DAD1 C, Sig=254,4 Ref=off

RetTim	Width	Area	Height	Area%	MS (+)
1.18	0.02	0.31	0.29	0.03	ND
1.33	0.02	885.71	735.06	99.97	499

Integration Results for MSD1 TIC, MS File

RetTim	Width	Area	Height	Area%	MS (+)
1.34	0.04	37530.46	12430.45	100.00	499

Ret. Time: 1.34

<<<< POSITIVE SPECTRA >>>>

ES-API Positive

