

File ..1\DATA\2018\20181109\491\BIZ2018-N08-WYQ9.D Tgt Mass (CHM):

Injection Date : 9 Nov 18 2:34 pm +0800 Seq. Line : 5

Sample Name : BIZ2018-N08-WYQ9 Location : P1-A-08

Acq. Operator : LQ\_1052 Inj : 1

Spec. Reported : MS Integration Inj Volume : 1 ul

Acq. Method : D:\Chem32\1\data\2018\20181109\491\1-POS-3MIN-1.M

Analysis Method : D:\CHEM32\1\DATA\2018\20181109\491\1-POS-3MIN-1.M

Catalog No : HY-N0082 Batch#34240 A-RP-314

Method Info : Mobile Phase: A: water(0.01%TFA) B:ACN(0.01%TFA)

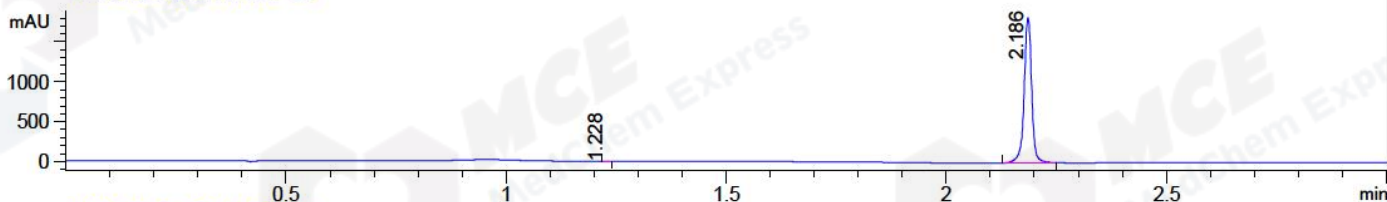
Gradient: 5% to 95%B within 1.3 min

Flow Rate :1.8ml/min

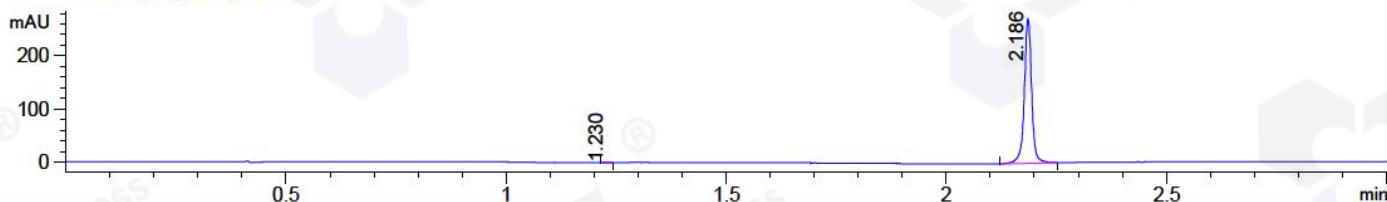
Column :SunFire C18, 4.6\*50mm,3.5um A-RP-314

Oven Temperature : 45□

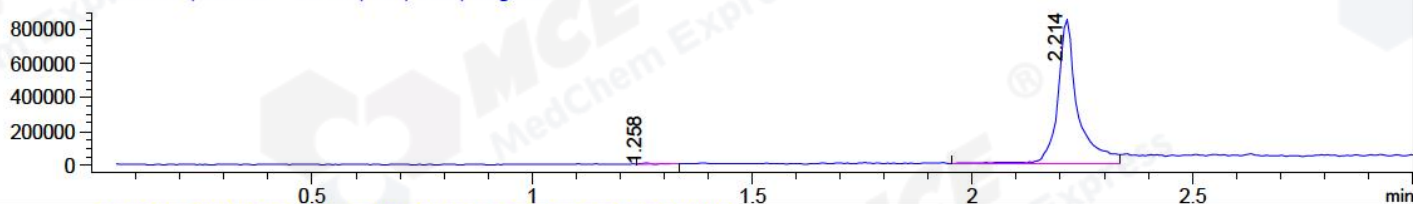
DAD1 B, Sig=214,4 Ref=off



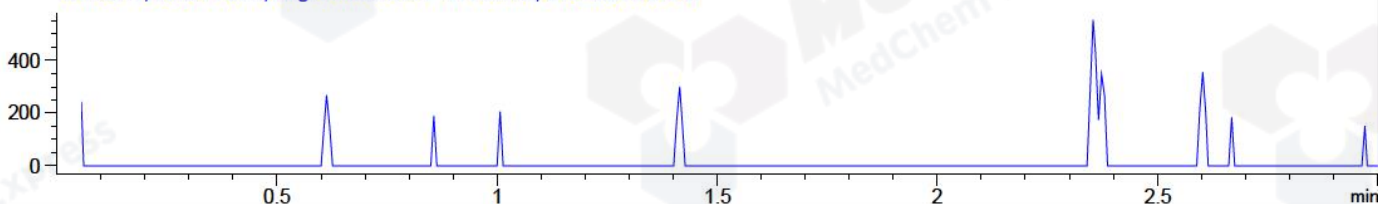
DAD1 C, Sig=254,4 Ref=off



MSD1 TIC, MS File ES-API, Pos, Scan, Frag: 70



Ion 427.1, MSD1 427.1, Target Mass 426.1 +H Positive, EIC=426.8:427.8



## Integration Results for DAD1 B, Sig=214,4 Ref=off

RetTim	Width	Area	Height	Area%	MS (+)
1.23	0.01	1.05	1.19	0.05	141
2.19	0.02	2184.70	1819.39	99.95	327

## Integration Results for DAD1 C, Sig=254,4 Ref=off

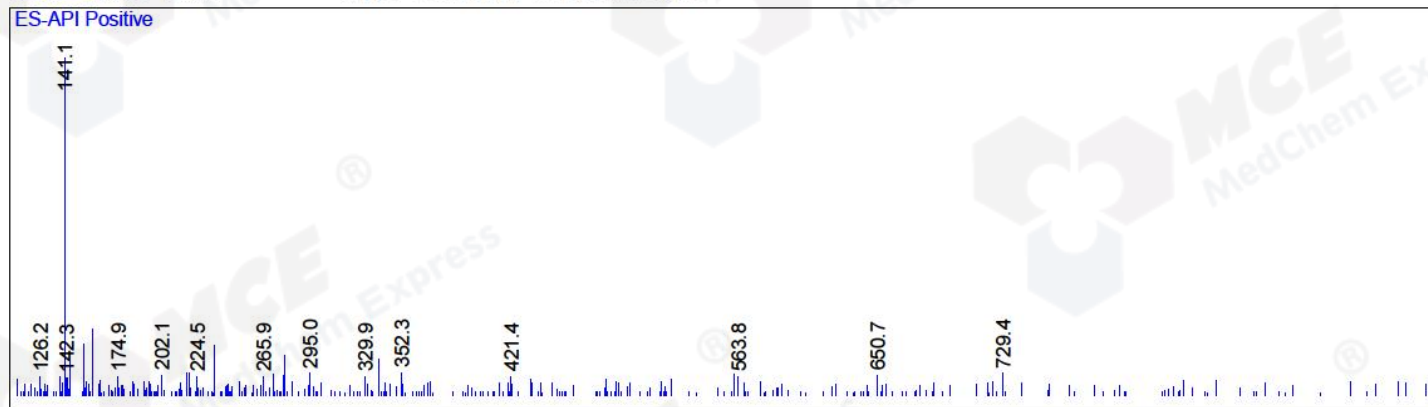
RetTim	Width	Area	Height	Area%	MS (+)
1.23	0.01	0.84	0.95	0.27	141
2.19	0.02	315.84	272.41	99.73	327

## Integration Results for MSD1 TIC, MS File

RetTim	Width	Area	Height	Area%	MS (+)
1.26	0.03	8761.59	5810.21	0.33	141
2.21	0.04	2682304.00	850150.38	99.67	327

Ret. Time: 1.26

<<<< POSITIVE SPECTRA >>>>



Ret. Time: 2.21

