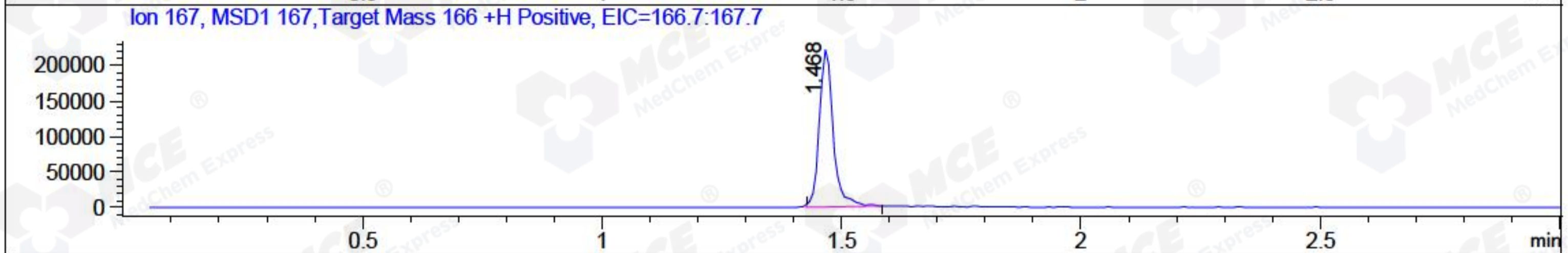
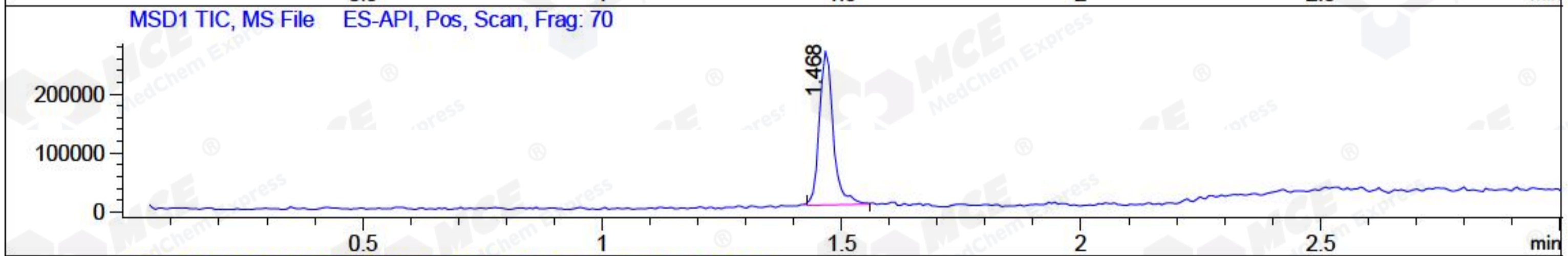
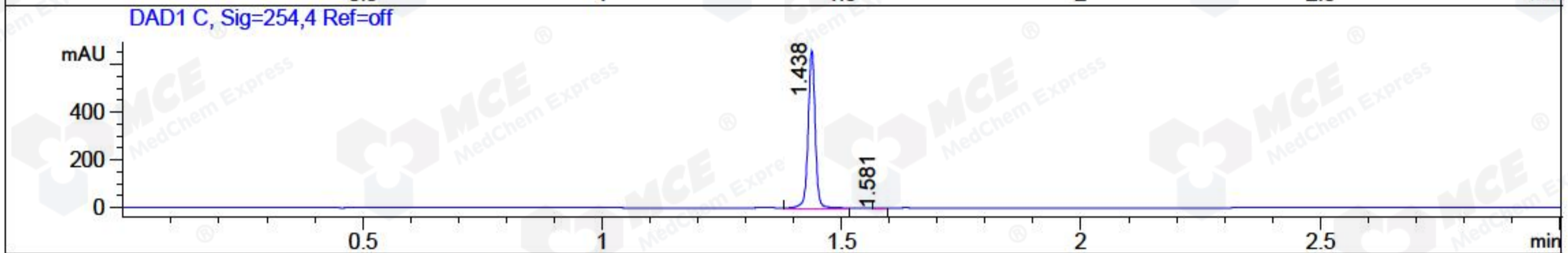
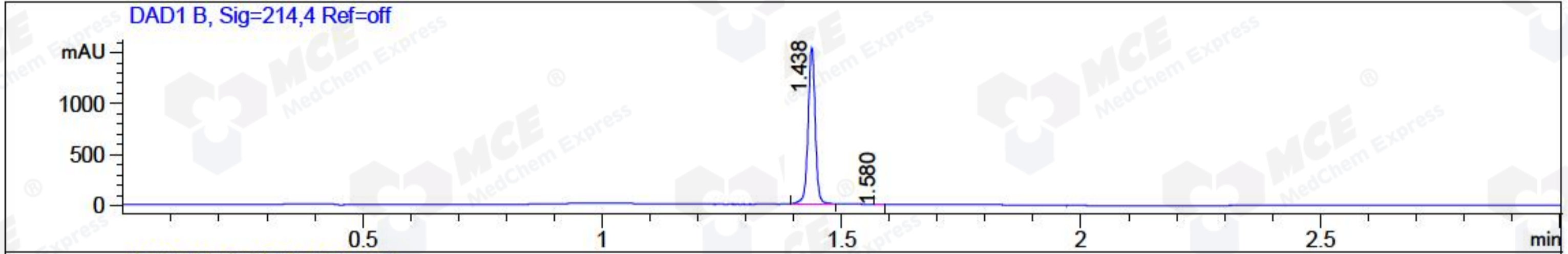


File ..1\DATA\2018\20181116\495\BIZ2018-N16-WYQ4.D Tgt Mass (CHM):  
 Injection Date : 16 Nov 18 1:26 pm +0800 Seq. Line : 41  
 Sample Name : BIZ2018-N16-WYQ4 Location : P1-A-06  
 Acq. Operator : LQ\_1052 Inj : 1  
 Spec. Reported : MS Integration Inj Volume : 1 ul  
 Acq. Method : D:\Chem32\1\data\2018\20181116\495\1-POS-3MIN-1.M  
 Analysis Method : D:\CHEM32\1\DATA\2018\20181116\495\1-POS-3MIN-1.M  
 Catalog No : HY-N0088 Batch#34445 A-RP-314  
 Method Info : Mobile Phase: A: water(0.01%TFA) B:ACN(0.01%TFA)  
 Gradient: 5% to 95%B within 1.3 min  
 Flow Rate :1.8ml/min  
 Column :SunFire C18, 4.6\*50mm,3.5um A-RP-314  
 Oven Temperature : 45□



Integration Results for DAD1 B, Sig=214,4 Ref=off

RetTim	Width	Area	Height	Area%	MS (+)
1.44	0.02	1600.69	1544.10	99.97	167
1.58	0.02	0.53	0.56	0.03	167

Integration Results for DAD1 C, Sig=254,4 Ref=off

RetTim	Width	Area	Height	Area%	MS (+)
1.44	0.02	672.63	661.87	99.96	167
1.58	0.01	0.28	0.36	0.04	167

Integration Results for MSD1 TIC, MS File

RetTim	Width	Area	Height	Area%	MS (+)
1.47	0.03	526510.06	262269.34	100.00	167

Ret. Time: 1.47

<<<< POSITIVE SPECTRA >>>>

ES-API Positive

