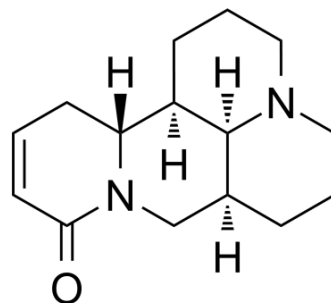


Sophocarpine

Cat. No.:	HY-N0103		
CAS No.:	6483-15-4		
Molecular Formula:	C ₁₅ H ₂₂ N ₂ O		
Molecular Weight:	246.35		
Target:	Autophagy; Apoptosis; PI3K; Akt; Influenza Virus		
Pathway:	Autophagy; Apoptosis; PI3K/Akt/mTOR; Anti-infection		
Storage:	Powder	-20°C	3 years
		4°C	2 years
	In solvent	-80°C	6 months
		-20°C	1 month



SOLVENT & SOLUBILITY

In Vitro

DMSO : 250 mg/mL (1014.82 mM; Need ultrasonic)

Preparing Stock Solutions	Solvent Concentration	Mass	1 mg	5 mg	10 mg
	1 mM		4.0593 mL	20.2963 mL	40.5927 mL
5 mM		0.8119 mL	4.0593 mL	8.1185 mL	
10 mM		0.4059 mL	2.0296 mL	4.0593 mL	

Please refer to the solubility information to select the appropriate solvent.

In Vivo

- Add each solvent one by one: **10% DMSO >> 40% PEG300 >> 5% Tween-80 >> 45% saline**
Solubility: ≥ 2.08 mg/mL (8.44 mM); Clear solution
- Add each solvent one by one: **10% DMSO >> 90% (20% SBE-β-CD in saline)**
Solubility: ≥ 2.08 mg/mL (8.44 mM); Clear solution
- Add each solvent one by one: **10% DMSO >> 90% corn oil**
Solubility: ≥ 2.08 mg/mL (8.44 mM); Clear solution

BIOLOGICAL ACTIVITY

Description

Sophocarpine is one of the significant alkaloid extracted from the traditional herb medicine *Sophora flavescens* which has many pharmacological properties such as anti-virus, anti-tumor, anti-inflammatory. Sophocarpine significantly inhibits the growth of gastric cancer (GC) cells through multiple mechanisms such as induction of **autophagy**, activation of cell **apoptosis** and down-regulation of cell survival **PI3K/AKT** signaling pathway. Sophocarpine has been demonstrated to have anti-tumor activity in various cancer cells, including hepatocellular carcinoma, prostate cancer and colorectal cancer^[1].

REFERENCES

[1]. Huang Y, et al. Sophocarpine inhibits the growth of gastric cancer cells via autophagy and apoptosis. *Front Biosci (Landmark Ed)*. 2019 Mar 1;24:616-627.

Caution: Product has not been fully validated for medical applications. For research use only.

Tel: 609-228-6898

Fax: 609-228-5909

E-mail: tech@MedChemExpress.com

Address: 1 Deer Park Dr, Suite Q, Monmouth Junction, NJ 08852, USA