

## Luteolin (Standard)

**Cat. No.:**

HY-N0162R

**Batch No.:**

287953

**CAS No.:**

491-70-3

**Test Date:**

2022-11-16

**Expiry Date:**

2024-11-15 (Stability testing is ongoing to ensure concentration accuracy . The certificate of analysis and product expiry date will be updated upon completion of testing. You can download the latest version from our official website)

**Molecular Formula:**
 $C_{15}H_{10}O_6$ 
**Molecular Weight:**

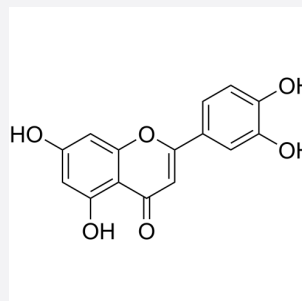
286.24

**Package:**

Brown glass bottle

**Storage:**

4°C, sealed storage, away from moisture and light

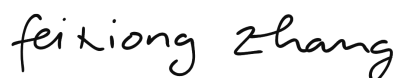

**Assay: 97.81%**

Assay (%) = (100% - Loss On Drying - Residue on ignition) \* Purity

Analytical	Specification	Result
Appearance:	White to light yellow (Solid)	Light yellow (Solid)
<sup>1</sup> H NMR Spectrum:	Consistent with structure	Consistent with structure
MS:	Consistent with structure	Consistent with structure
Purity:	Not less than 90.0%	98.72% (HPLC)
Loss on drying (LOD):	<3.0%	0.583 %
Residue on ignition (ROI):	N/A	0.33%
Traceability:	Fully qualified and calibrated to ISO 17025 requirements. All calibrations utilize institute of metrology traceable weights which are calibrated externally by a qualified ISO 17025 accredited calibration laboratory to metrology institute standards.	



Quality Control



Quality Assurance

