

File ..DATA\2019\20190117\552\BIZ2019-116-WYQ6.D Tgt Mass (CHM):

Injection Date : 17 Jan 19 11:11 am +0800 Seq. Line : 22

Sample Name : BIZ2019-116-WYQ6 Location : P2-C-02

Acq. Operator : LQ_1052 Inj : 1

Spec. Reported : MS Integration Inj Volume : 0.2 ul

Acq. Method : D:\Chem32\1\data\2019\20190117\552\1-POS-3MIN-1.M

Analysis Method : D:\CHEM32\1\DATA\2019\20190117\552\1-POS-3MIN-1.M

Catalog No : HY-N0166 Batch#36861

Method Info : Mobile Phase: A: water(0.01%TFA) B:ACN(0.01%TFA)

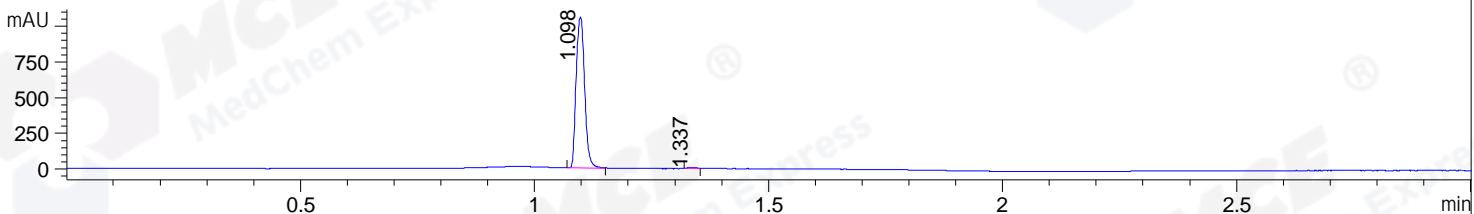
Gradient: 5% to 95%B within 1.3 min

Flow Rate :1.8ml/min

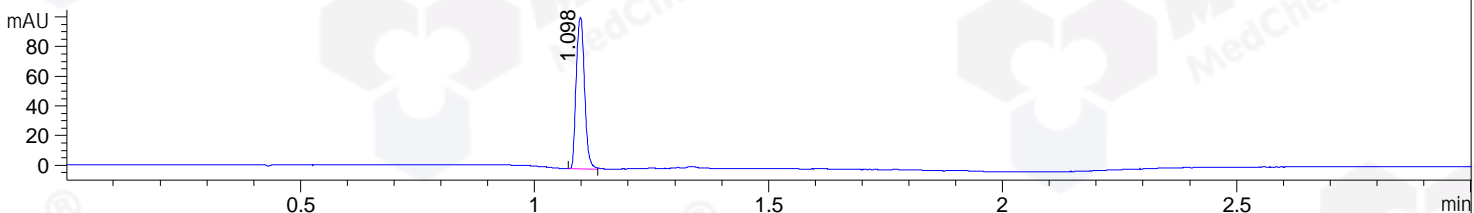
Column :SunFire C18, 4.6*50mm,3.5um A-RP-314

Oven Temperature : 45

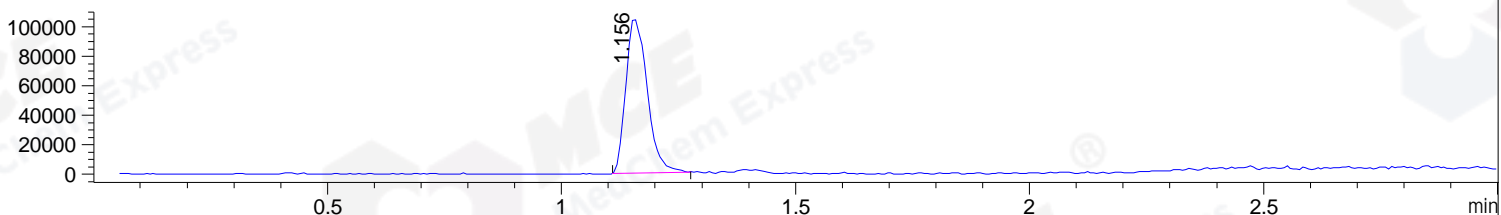
DAD1 B, Sig=214,4 Ref=off



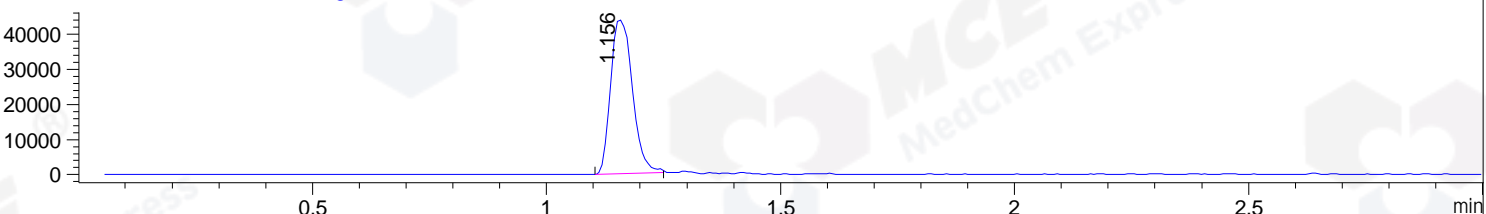
DAD1 C, Sig=254,4 Ref=off



MSD1 TIC, MS File ES-API, Pos, Scan, Frag: 70



Ion 175.1, MSD1 175.1, Target Mass 174.1 +H Positive, EIC=174.8:175.8



Integration Results for DAD1 B, Sig=214,4 Ref=off

RetTim	Width	Area	Height	Area%	MS (+)
1.10	0.02	1336.44	1058.75	99.45	130
1.34	0.02	7.36	6.17	0.55	ND

Integration Results for DAD1 C, Sig=254,4 Ref=off

RetTim	Width	Area	Height	Area%	MS (+)
1.10	0.02	126.56	102.35	100.00	130

Integration Results for MSD1 TIC, MS File

RetTim	Width	Area	Height	Area%	MS (+)
1.16	0.05	335463.59	105135.03	100.00	130

Ret. Time: 1.16

<<<< POSITIVE SPECTRA >>>>

ES-API Positive

