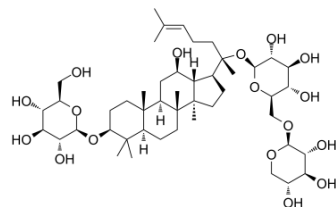


Gynostemma Extract

| | | | |
|---------------------------|---|-------|----------|
| Cat. No.: | HY-N0167 | | |
| CAS No.: | 80321-63-7 | | |
| Molecular Formula: | C ₄₇ H ₈₀ O ₁₇ | | |
| Molecular Weight: | 917.13 | | |
| Target: | Endogenous Metabolite | | |
| Pathway: | Metabolic Enzyme/Protease | | |
| Storage: | Powder | -20°C | 3 years |
| | | 4°C | 2 years |
| | In solvent | -80°C | 6 months |
| | | -20°C | 1 month |



SOLVENT & SOLUBILITY

| | | | | | |
|---|--|--------------------------|--------------|-----------|------------|
| In Vitro | DMSO : 25 mg/mL (27.26 mM; Need ultrasonic) | | | | |
| | | Solvent Concentration | Mass 1 mg | 5 mg | 10 mg |
| | Preparing Stock Solutions | 1 mM | 1.0904 mL | 5.4518 mL | 10.9036 mL |
| | | 5 mM | 0.2181 mL | 1.0904 mL | 2.1807 mL |
| 10 mM | | 0.1090 mL | 0.5452 mL | 1.0904 mL | |
| Please refer to the solubility information to select the appropriate solvent. | | | | | |
| In Vivo | 1. Add each solvent one by one: 10% DMSO >> 40% PEG300 >> 5% Tween-80 >> 45% saline Solubility: ≥ 2.5 mg/mL (2.73 mM); Clear solution | | | | |

BIOLOGICAL ACTIVITY

| | |
|-------------------------------------|--|
| Description | Gynostemma Extract (Ginsenoside C-Mx1) is a natural product. |
| IC₅₀ & Target | Human Endogenous Metabolite |

Caution: Product has not been fully validated for medical applications. For research use only.

Tel: 609-228-6898

Fax: 609-228-5909

E-mail: tech@MedChemExpress.com

Address: 1 Deer Park Dr, Suite Q, Monmouth Junction, NJ 08852, USA