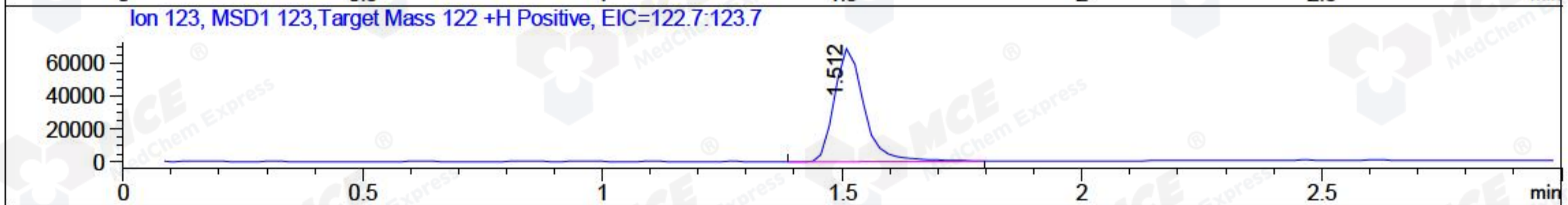
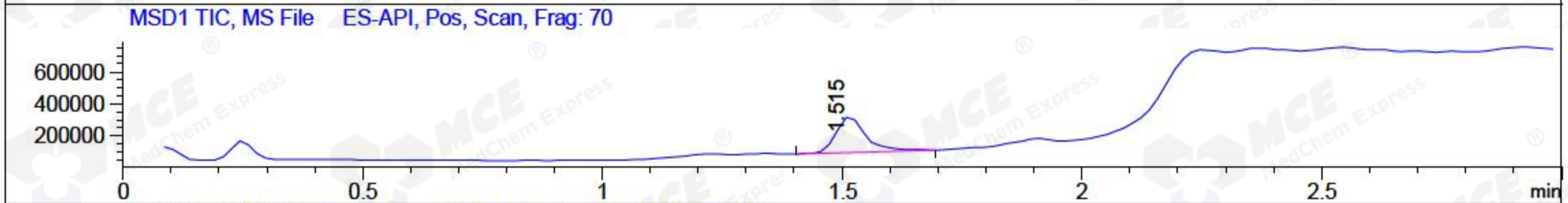
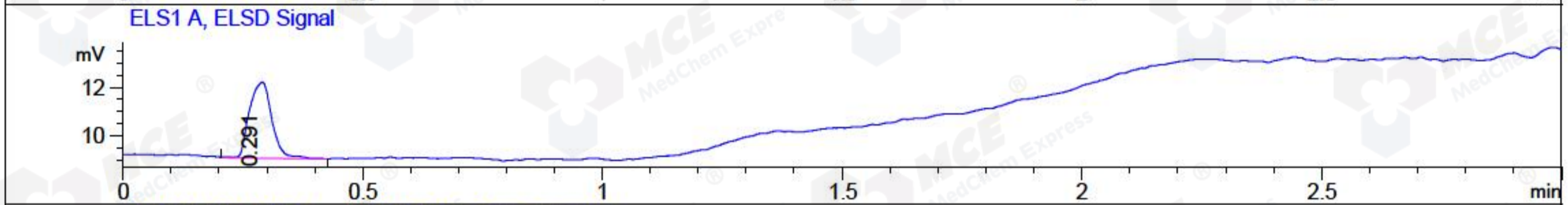
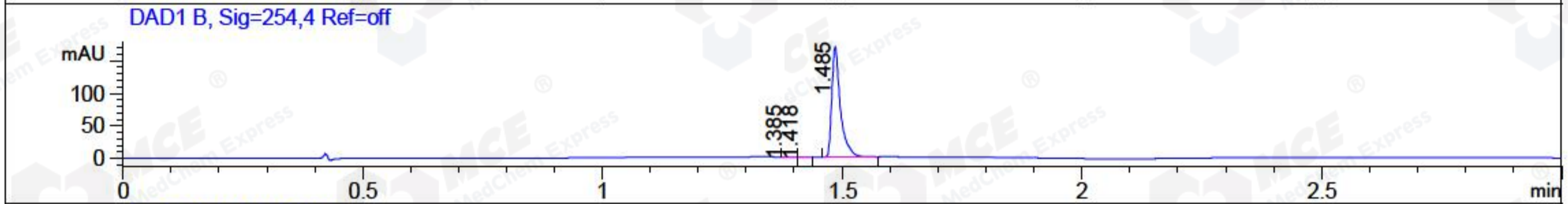
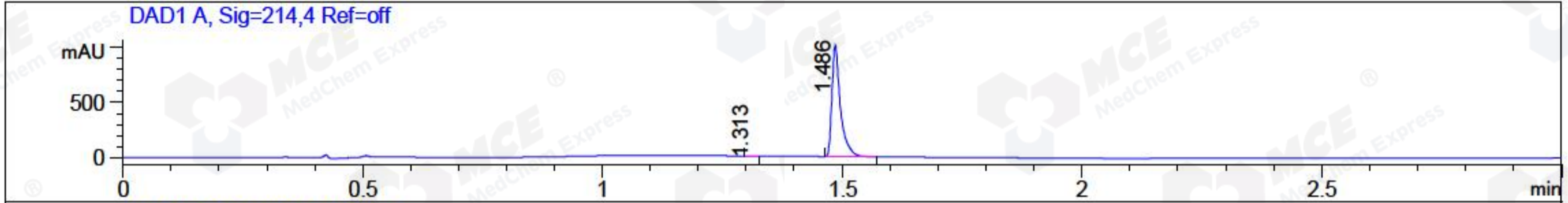


File ..Data\20171130\20171130-1\BIZ2017-N29-WYQ9.D Tgt Mass (CHM):
 Injection Date : 30 Nov 17 10:41 am +0800 Seq. Line : 11
 Sample Name : BIZ2017-N29-WYQ9 Location : P2-B-02
 Acq. Operator : ZLJ_587 Inj : 1
 Spec. Reported : MS Integration Inj Volume : 2 ul
 Acq. Method : D:\LCMS03\Data\20171130\20171130-1\1-POS-3MIN.M
 Analysis Method : D:\LCMS03\Data\20171130\20171130-1\1-POS-3MIN.M
 Catalog No : HY-N0216 Batch#27523
 Method Info : Mobile Phase: A: water(0.01%TFA) B:ACN(0.01%TFA)
 Gradient: 5% to 95%B within 1.3 min
 Flow Rate : 1.8ml/min
 Column :SunFire C18, 4.6*50mm,3.5um A-RP-186
 Oven Temperature : 45C



Integration Results for DAD1 A, Sig=214,4 Ref=off

RetTim	Width	Area	Height	Area%	MS (+)
1.31	0.02	0.66	0.47	0.05	144
1.49	0.02	1236.04	1002.22	99.95	123

Integration Results for DAD1 B, Sig=254,4 Ref=off

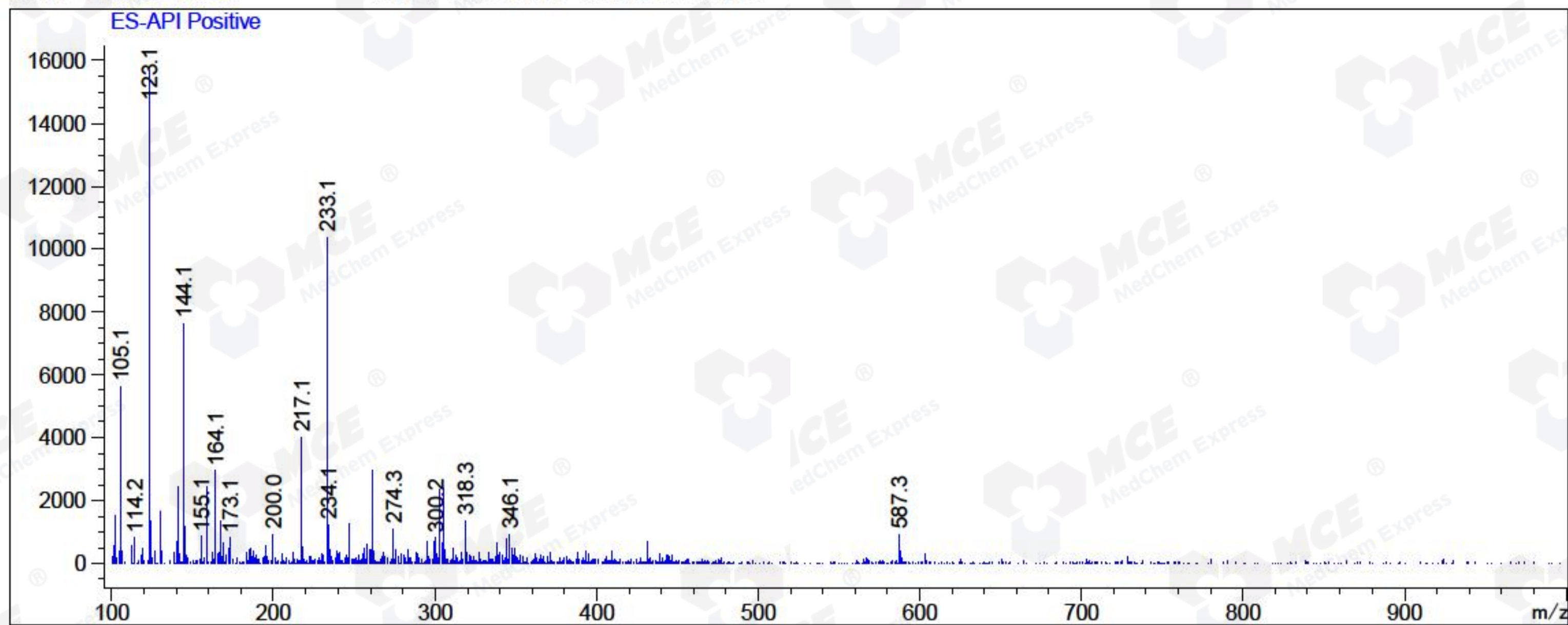
RetTim	Width	Area	Height	Area%	MS (+)
1.38	0.01	0.06	0.07	0.03	144
1.42	0.01	0.06	0.07	0.03	144
1.49	0.02	209.15	167.56	99.94	123

Integration Results for MSD1 TIC, MS File

RetTim	Width	Area	Height	Area%	MS (+)
1.51	0.07	962533.69	223386.61	100.00	123

Ret. Time: 1.51

<<<< POSITIVE SPECTRA >>>>



*** End of Report ***