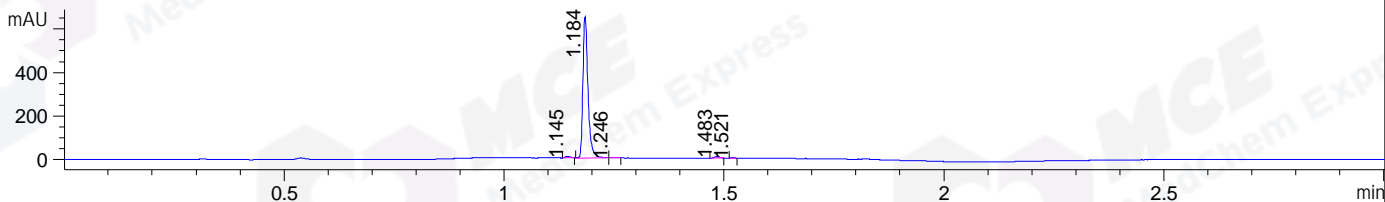
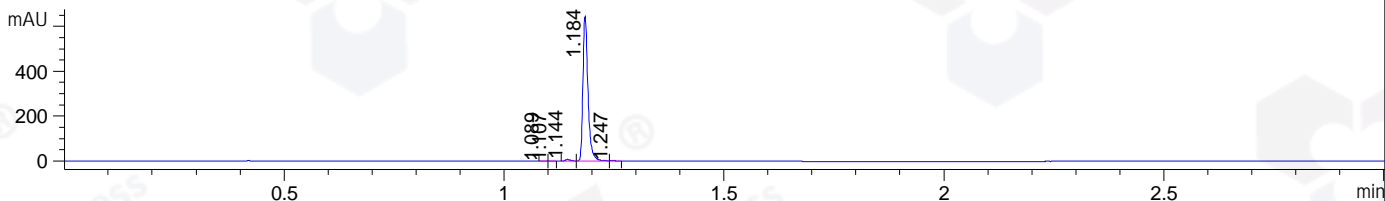


File ..DATA\2020\20200525\973\CPK2020-522-19358-.D Tgt Mass (CHM):  
 Injection Date : 25 May 20 5:28 pm +0800 Seq. Line : 105  
 Sample Name : CPK2020-522-19358 Location : P1-B-06  
 Acq. Operator : ZJ\_1432 Inj : 1  
 Spec. Reported : MS Integration Inj Volume : 0.3 ul  
 Acq. Method : D:\Chem32\1\data\2020\20200525\973\1-POS-3MIN.M  
 Analysis Method : D:\CHEM32\1\DATA\2020\20200525\973\1-POS-3MIN.M  
 Catalog No : HY-N0226  
 Method Info : Mobile Phase: A: water(0.01%TFA) B:ACN(0.01%TFA)  
 Gradient: 5% to 95%B within 1.3 min  
 Flow Rate :1.8ml/min  
 Column :SunFire C18, 4.6\*50mm,3.5um A-RP-607  
 Oven Temperature : 45

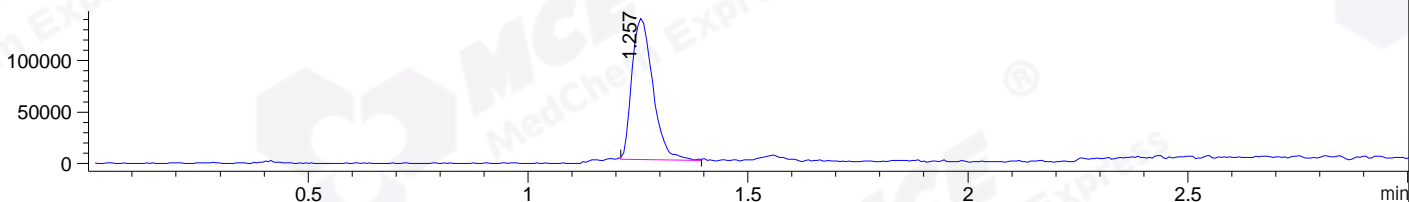
DAD1 B, Sig=214,4 Ref=off



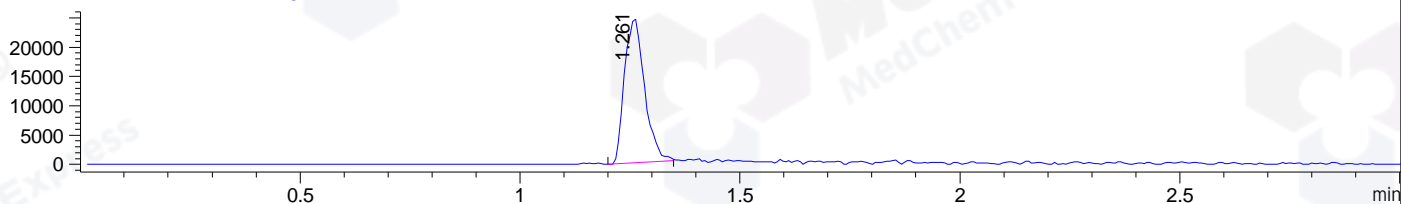
DAD1 C, Sig=254,4 Ref=off



MSD1 TIC, MS File ES-API, Pos, Scan, Frag: 70



Ion 337, MSD1 337, Target Mass 336 +H Positive, EIC=336.7:337.7



Integration Results for DAD1 B, Sig=214,4 Ref=off

RetTim	Width	Area	Height	Area%	MS (+)
1.14	0.01	4.33	6.45	0.82	287
1.18	0.01	518.09	650.67	98.01	336
1.25	0.01	1.19	1.51	0.23	336
1.48	0.01	4.36	5.89	0.82	336
1.52	0.01	0.66	1.17	0.12	336

Integration Results for DAD1 C, Sig=254,4 Ref=off

RetTim	Width	Area	Height	Area%	MS (+)
1.09	0.01	0.72	0.85	0.14	ND
1.11	0.01	0.48	0.60	0.09	ND
1.14	0.01	5.50	6.83	1.06	287
1.18	0.01	511.13	645.93	98.46	336
1.25	0.01	1.31	1.63	0.25	336

Integration Results for MSD1 TIC, MS File

RetTim	Width	Area	Height	Area%	MS (+)
--------	-------	------	--------	-------	--------

1.26 0.05 451723.47 136934.33 100.00 336

Ret. Time: 1.26

<<<< POSITIVE SPECTRA >>>>

ES-API Positive

