

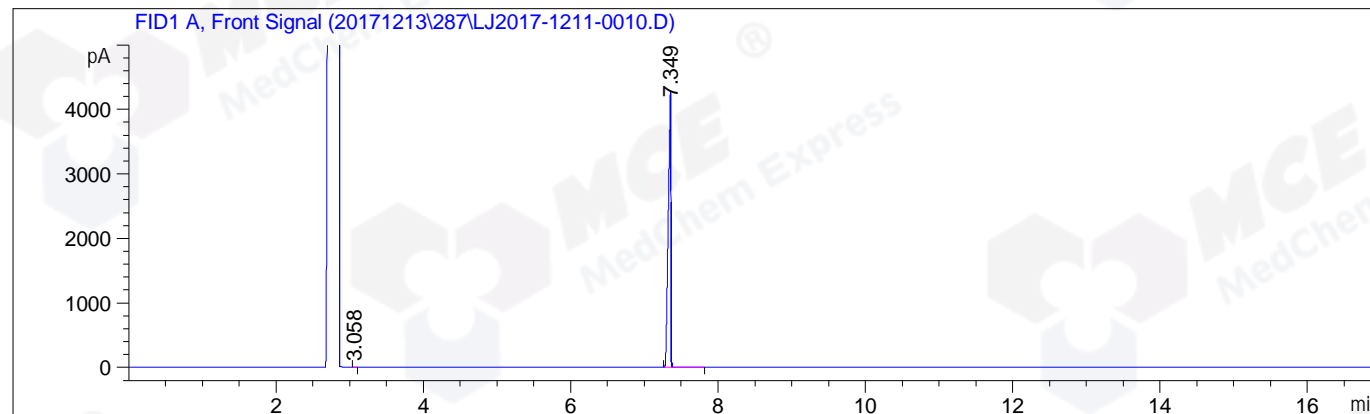
Sample Name: LJ2017-1211-0010

```

=====
Acq. Operator   : LSL_985                      Seq. Line :   10
Acq. Instrument : GC-03                      Location  :    8 (F)
Injection Date  : 12/13/2017 12:27:11 PM      Inj       :    1
                                           Inj Volume: 1 µl
Acq. Method    : D:\Chem32\1\Data\20171213\287\GC-FQ.M
Last changed   : 12/13/2017 8:55:51 AM by LSL_985
Analysis Method: D:\Chem32\1\Data\20171213\287\GC-FQ.M (Sequence Method)
Last changed   : 12/13/2017 4:38:33 PM by LSL_985
                (modified after loading)
Catalog No     : HY-N0264 Batch#39933 A-CP-21
=====

```

Additional Info : Peak(s) manually integrated



```

=====
                          Area Percent Report
=====

```

```

Sorted By      :      Signal
Multiplier     :      1.0000
Dilution       :      1.0000
Do not use Multiplier & Dilution Factor with ISTDs

```

Signal 1: FID1 A, Front Signal

Peak #	RetTime [min]	Type	Width [min]	Area [pA*s]	Height [pA]	Area %
1	3.058	MM	0.0388	6.43723	2.76403	0.06147
2	7.349	BB	0.0337	1.04649e4	4218.84863	99.93853

```
Totals :                1.04714e4  4221.61267
```

```

=====
*** End of Report ***
=====

```