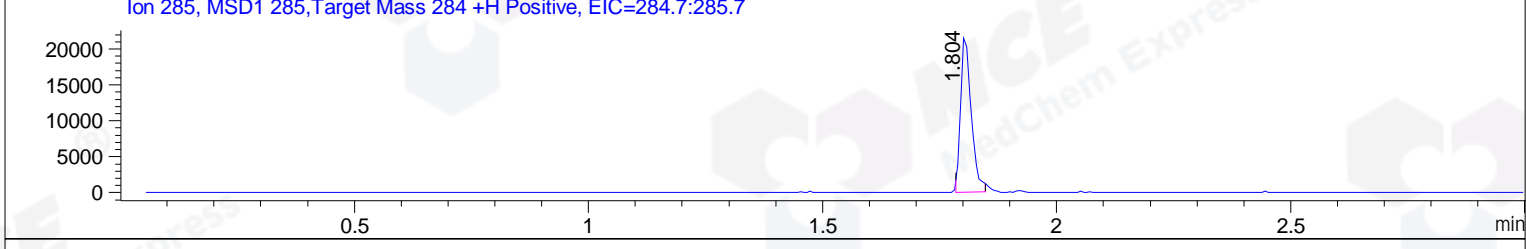
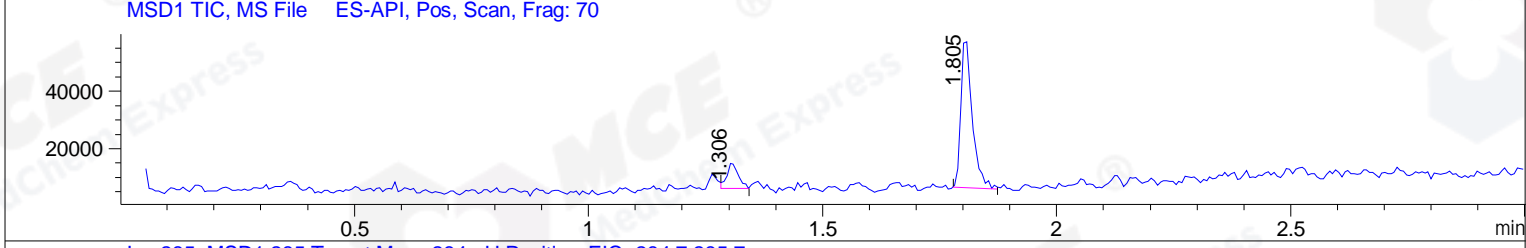
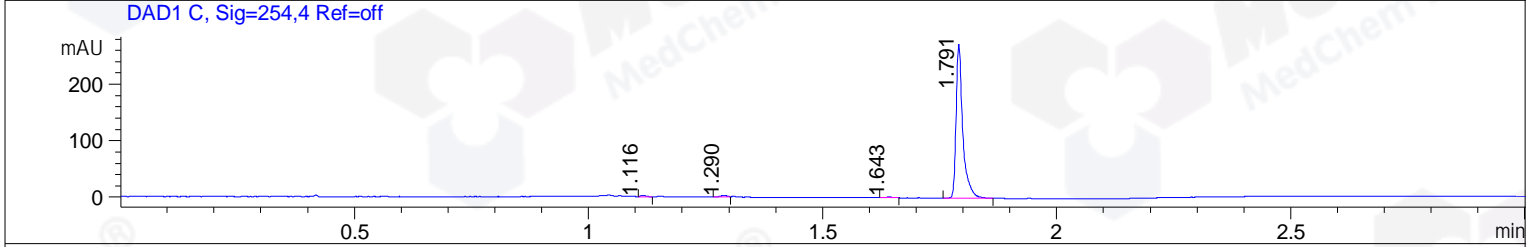
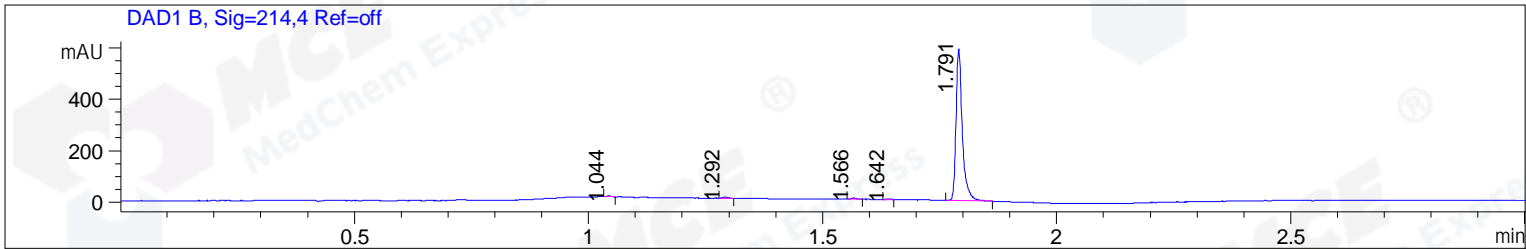


File ..ATA\2020\20200628\1018\CPK2020-624-27734-.D Tgt Mass (CHM):
 Injection Date : 28 Jun 20 10:17 am +0800 Seq. Line : 17
 Sample Name : CPK2020-624-27734 Location : PI-A-08
 Acq. Operator : ZJ_1432 Inj : 1
 Spec. Reported : MS Integration Inj Volume : 0.3 ul
 Acq. Method : D:\Chem32\1\data\2020\20200628\1018\1-POS-3MIN.M
 Analysis Method : D:\CHEM32\1\DATA\2020\20200628\1018\1-POS-3MIN.M
 Catalog No : HY-N0274
 Method Info : Mobile Phase: A: water(0.01%TFA) B:ACN(0.01%TFA)
 Gradient: 5% to 95%B within 1.3 min
 Flow Rate :1.8ml/min
 Column :SunFire C18, 4.6*50mm,3.5um A-RP-607
 Oven Temperature : 45



Integration Results for DAD1 B, Sig=214,4 Ref=off

RetTim	Width	Area	Height	Area%	MS (+)
1.04	0.01	1.64	2.64	0.29	261
1.29	0.01	4.30	5.28	0.76	261
1.57	0.01	3.99	4.76	0.71	261
1.64	0.01	0.92	1.66	0.16	261
1.79	0.02	552.88	590.21	98.08	285

Integration Results for DAD1 C, Sig=254,4 Ref=off

RetTim	Width	Area	Height	Area%	MS (+)
1.12	0.01	1.77	2.34	0.64	261
1.29	0.01	2.23	2.49	0.80	261
1.64	0.01	1.02	1.15	0.37	261
1.79	0.02	272.15	273.27	98.19	285

Integration Results for MSD1 TIC, MS File

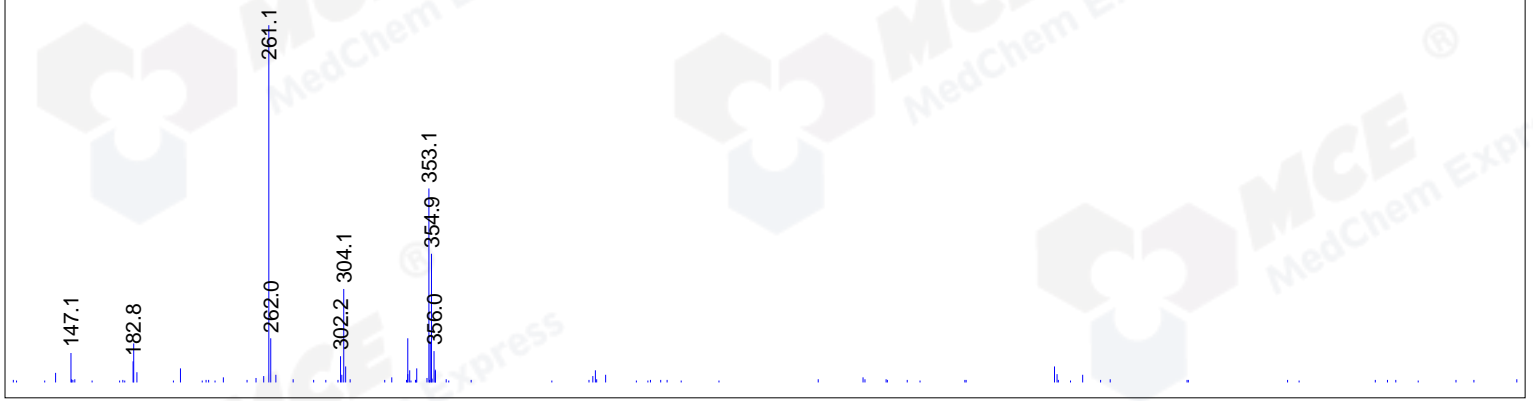
RetTim	Width	Area	Height	Area%	MS (+)
--------	-------	------	--------	-------	--------

1.31	0.03	14695.92	9136.44	14.37	261
1.81	0.03	87594.29	52675.18	85.63	285

Ret. Time: 1.31

<<<< POSITIVE SPECTRA >>>>

ES-API Positive



Ret. Time: 1.81

ES-API Positive

