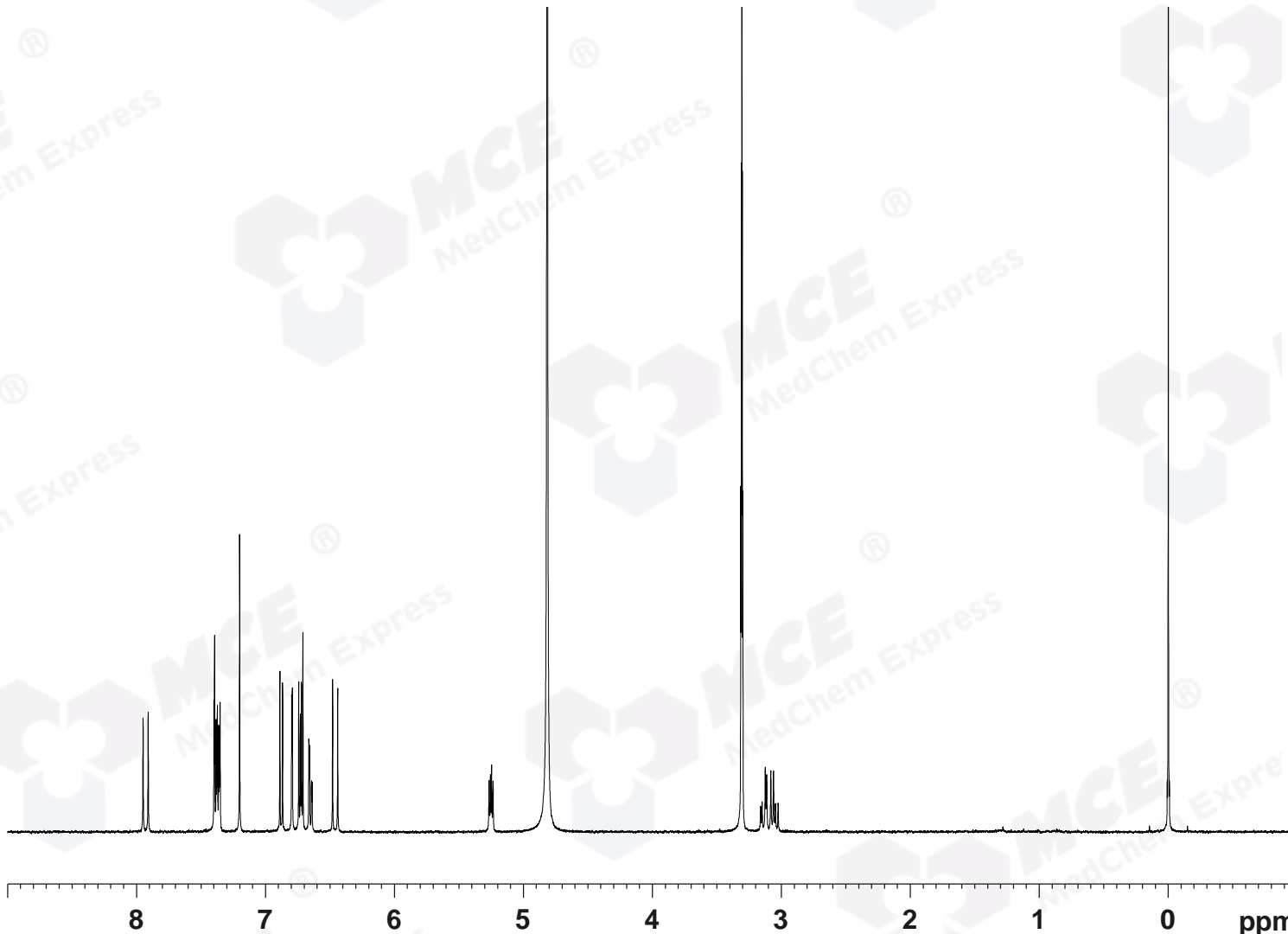


7.375
7.365
7.360
7.354
7.203
6.890
6.870
6.799
6.794
6.744
6.732
6.723
6.712
6.666
6.661
6.646
6.641
6.482
6.442
5.268
5.257
5.248
5.237
3.162
3.150
3.126
3.115
3.083
3.062
3.047
3.026



Catalog No: HY-N0319 Batch#36936
 NAME 9081401-1H NMR CD3OD
 EXPNO 2
 PROCNO 1

F2 - Acquisition Parameters
 Date_ 20180815
 Time_ 9.15
 INSTRUM spect
 PROBHD 5 mm PABBO BB/
 PULPROG zg30
 TD 65536
 SOLVENT MeOD
 NS 2
 DS 2
 SWH 8012.820 Hz
 FIDRES 0.122266 Hz
 AQ 4.0894465 sec
 RG 181.7
 DW 62.400 usec
 DE 6.50 usec
 TE 301.1 K
 D1 1.00000000 sec
 TD0 1

===== CHANNEL f1 =====
 SFO1 400.1324710 MHz
 NUC1 1H
 P1 15.36 usec
 PLW1 11.50800037 W

F2 - Processing parameters
 SI 65536
 SF 400.1300087 MHz
 WDW EM
 SSB 0
 LB 0.30 Hz
 GB 0
 PC 1.00
 SINO 0

7.949
7.910
7.402
7.396
7.385
7.380
7.375
7.365
7.360
7.354
7.203
6.890
6.870
6.799
6.794
6.744
6.732
6.723
6.712
6.666
6.661
6.646
6.641
6.482
6.442

Catalog No: HY-N0319 Batch#36936
NAME 9081401-1H NMR CD3OD
EXPNO 2
PROCNO 1

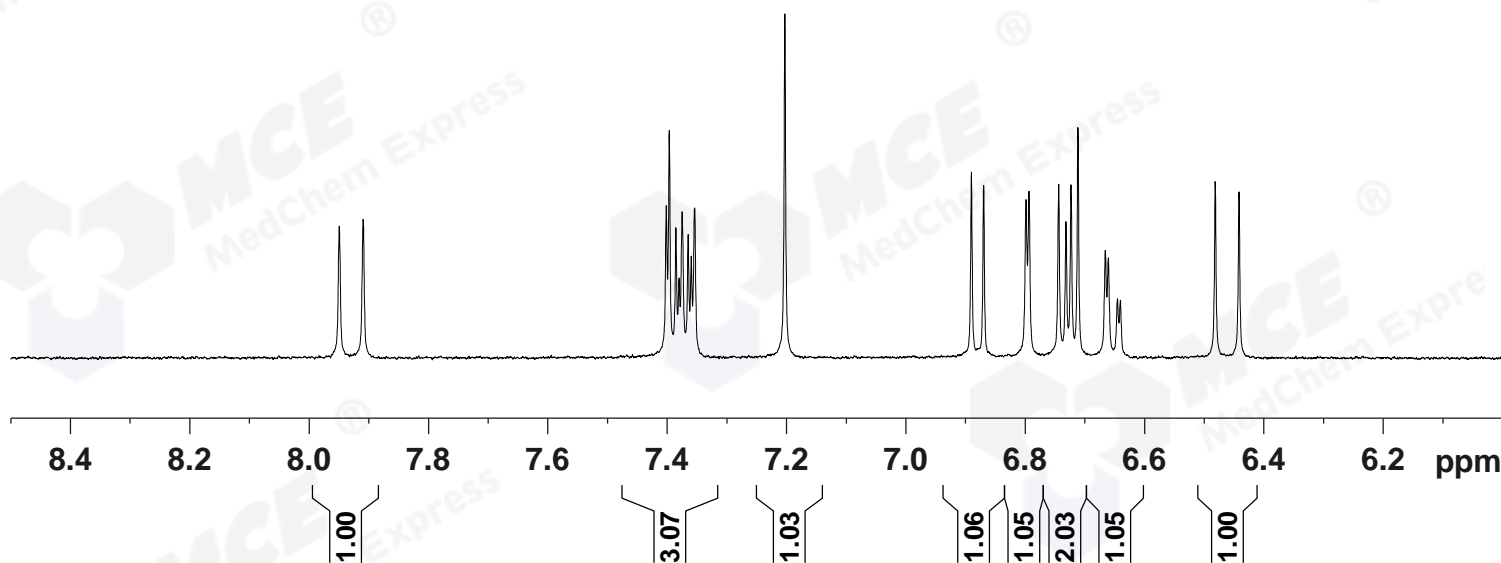
F2 - Acquisition Parameters

Date_ 20180815
Time_ 9.15
INSTRUM spect
PROBHD 5 mm PABBO BB/
PULPROG zg30
TD 65536
SOLVENT MeOD
NS 2
DS 2
SWH 8012.820 Hz
FIDRES 0.122266 Hz
AQ 4.0894465 sec
RG 181.7
DW 62.400 usec
DE 6.50 usec
TE 301.1 K
D1 1.00000000 sec
TD0 1

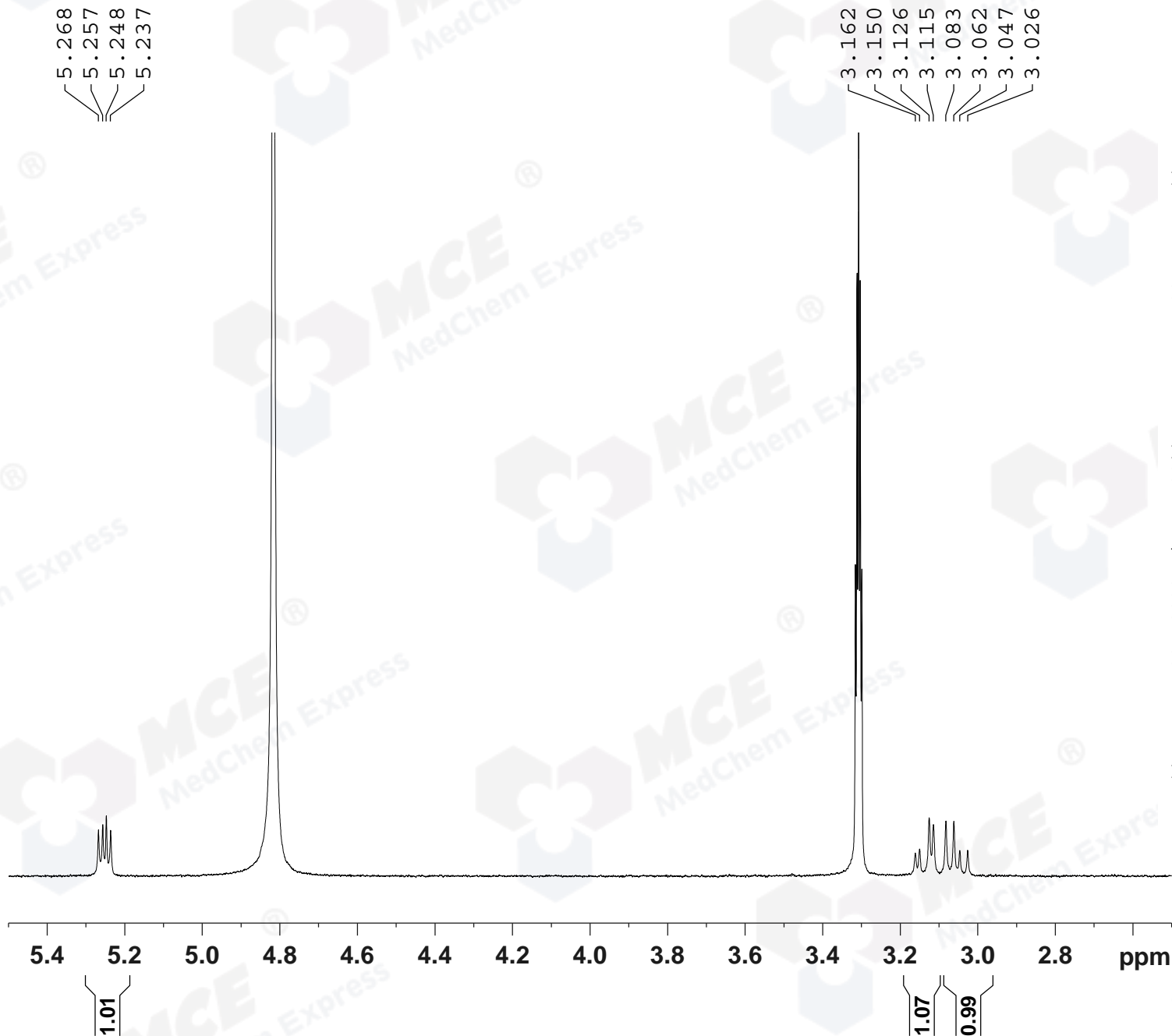
===== CHANNEL f1 =====
SFO1 400.1324710 MHz
NUC1 1H
P1 15.36 usec
PLW1 11.50800037 W

F2 - Processing parameters

SI 65536
SF 400.1300087 MHz
WDW EM
SSB 0
LB 0.30 Hz
GB 0
PC 1.00
SINO 0



8.4 8.2 8.0 7.8 7.6 7.4 7.2 7.0 6.8 6.6 6.4 6.2 ppm



Catalog No: HY-N0319 Batch#36936
 NAME 9081401-1H NMR CD3OD
 EXPNO 2
 PROCNO 1

F2 - Acquisition Parameters
 Date_ 20180815
 Time_ 9.15
 INSTRUM spect
 PROBHD 5 mm PABBO BB/
 PULPROG zg30
 TD 65536
 SOLVENT MeOD
 NS 2
 DS 2
 SWH 8012.820 Hz
 FIDRES 0.122266 Hz
 AQ 4.0894465 sec
 RG 181.7
 DW 62.400 usec
 DE 6.50 usec
 TE 301.1 K
 D1 1.00000000 sec
 TD0 1

===== CHANNEL f1 =====
 SFO1 400.1324710 MHz
 NUC1 1H
 P1 15.36 usec
 PLW1 11.50800037 W

F2 - Processing parameters
 SI 65536
 SF 400.1300087 MHz
 WDW EM
 SSB 0
 LB 0.30 Hz
 GB 0
 PC 1.00
 SINO 0