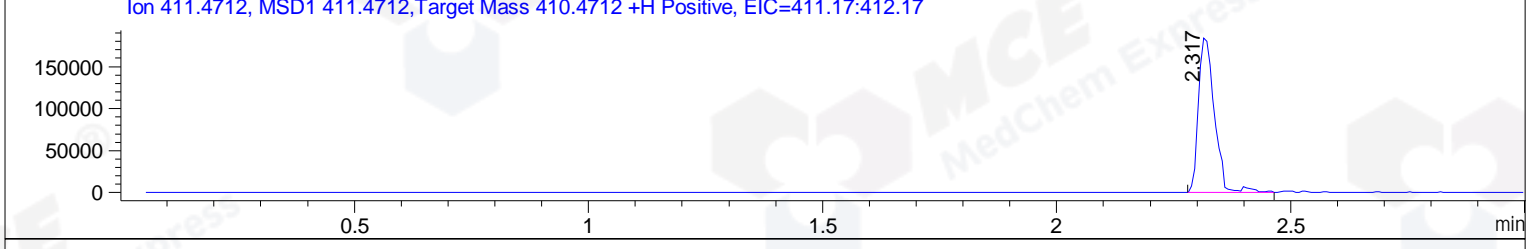
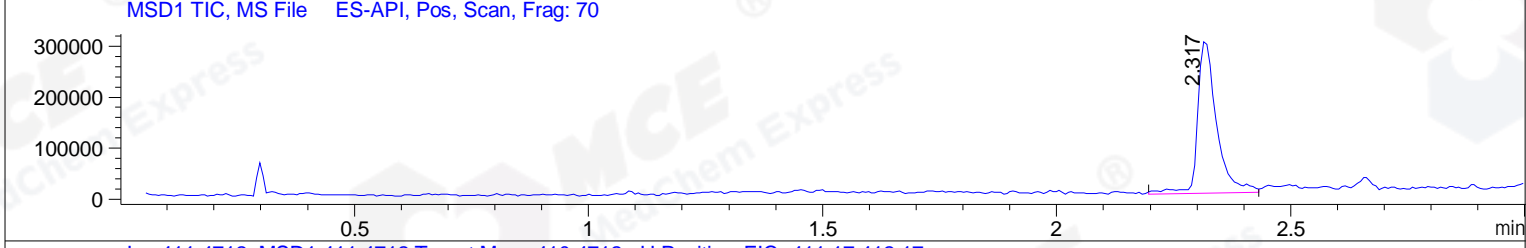
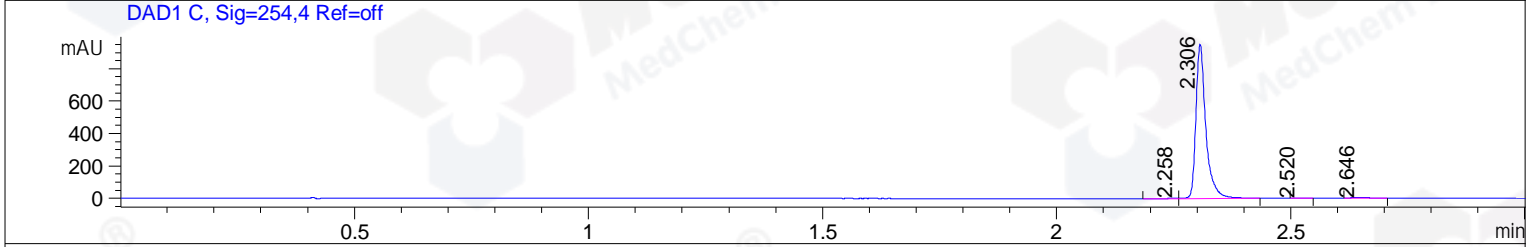
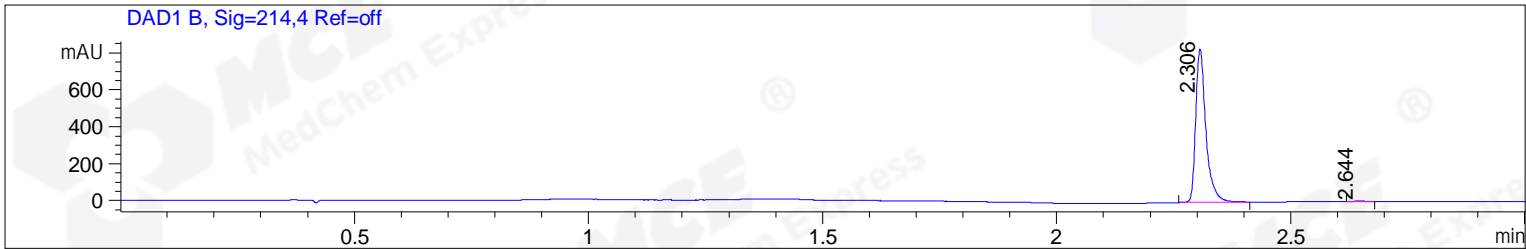


File ..\DATA\2019\20190720\650\CPK2019-718-24375.D Tgt Mass (CHM):
 Injection Date : 20 Jul 19 10:18 am +0800 Seq. Line : 19
 Sample Name : CPK2019-718-24375 Location : P1-A-05
 Acq. Operator : ZJ_1432 Inj : 1
 Spec. Reported : MS Integration Inj Volume : 1 ul
 Acq. Method : D:\Chem32\1\data\2019\20190720\650\1-POS-3MIN.M
 Analysis Method : D:\CHEM32\1\DATA\2019\20190720\650\1-POS-3MIN.M
 Catalog No : HY-N0328 Batch# 24375
 Method Info : Mobile Phase: A: water(0.01%TFA) B:ACN(0.01%TFA)
 Gradient: 5% to 95%B within 1.3 min
 Flow Rate :1.8ml/min
 Column :SunFire C18, 4.6*50mm,3.5um A-RP-433
 Oven Temperature : 45



Integration Results for DAD1 B, Sig=214,4 Ref=off

RetTim	Width	Area	Height	Area%	MS (+)
2.31	0.03	1261.57	831.73	99.46	411
2.64	0.03	6.84	4.01	0.54	425

Integration Results for DAD1 C, Sig=254,4 Ref=off

RetTim	Width	Area	Height	Area%	MS (+)
2.26	0.03	2.71	1.34	0.19	ND
2.31	0.02	1396.44	951.84	99.15	411
2.52	0.02	1.00	0.67	0.07	ND
2.65	0.03	8.33	4.36	0.59	425

Integration Results for MSD1 TIC, MS File

RetTim	Width	Area	Height	Area%	MS (+)
2.32	0.04	841465.87	300915.50	100.00	411

Ret. Time: 2.32

<<<< POSITIVE SPECTRA >>>>

ES-API Positive

