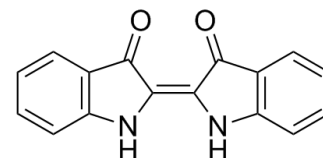


Indigo

| | |
|--------------------|---|
| Cat. No.: | HY-N0335 |
| CAS No.: | 482-89-3 |
| Molecular Formula: | C ₁₆ H ₁₀ N ₂ O ₂ |
| Molecular Weight: | 262.26 |
| Target: | Others |
| Pathway: | Others |
| Storage: | Please store the product under the recommended conditions in the COA. |



BIOLOGICAL ACTIVITY

Description

Indigo is a deep and rich color dye for indole stain, isolated from the plant *Indigofera tinctoria* and related species^[1].

REFERENCES

[1]. Maerz and Paul A Dictionary of Color New York:1930 McGraw-Hill Page 197; Color Sample of Indigo: Page 117 Plate 47 Color Sample E10.

Caution: Product has not been fully validated for medical applications. For research use only.

Tel: 609-228-6898

Fax: 609-228-5909

E-mail: tech@MedChemExpress.com

Address: 1 Deer Park Dr, Suite Q, Monmouth Junction, NJ 08852, USA