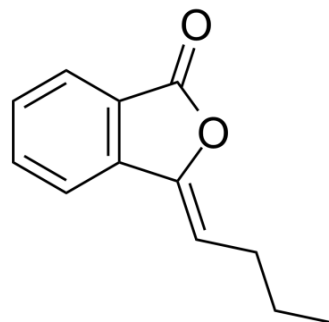


3-Butylidene-phthalide

| | |
|---------------------------|--|
| Cat. No.: | HY-N0336 |
| CAS No.: | 551-08-6 |
| Molecular Formula: | C ₁₂ H ₁₂ O ₂ |
| Molecular Weight: | 188.22 |
| Target: | Parasite |
| Pathway: | Anti-infection |
| Storage: | 4°C, sealed storage, away from moisture and light * In solvent : -80°C, 6 months; -20°C, 1 month (sealed storage, away from moisture and light) |



SOLVENT & SOLUBILITY

| | | | | | |
|---|--|----------------------|-------------|-------------|--------------|
| In Vitro | DMSO : 250 mg/mL (1328.23 mM; Need ultrasonic) | | | | |
| | | Solvent | Mass | | |
| | Preparing Stock Solutions | Concentration | 1 mg | 5 mg | 10 mg |
| | | 1 mM | 5.3129 mL | 26.5647 mL | 53.1293 mL |
| | | 5 mM | 1.0626 mL | 5.3129 mL | 10.6259 mL |
| 10 mM | | 0.5313 mL | 2.6565 mL | 5.3129 mL | |
| Please refer to the solubility information to select the appropriate solvent. | | | | | |
| In Vivo | <ol style="list-style-type: none"> Add each solvent one by one: 10% DMSO >> 40% PEG300 >> 5% Tween-80 >> 45% saline Solubility: ≥ 2.08 mg/mL (11.05 mM); Clear solution Add each solvent one by one: 10% DMSO >> 90% (20% SBE-β-CD in saline) Solubility: ≥ 2.08 mg/mL (11.05 mM); Clear solution Add each solvent one by one: 10% DMSO >> 90% corn oil Solubility: ≥ 2.08 mg/mL (11.05 mM); Clear solution | | | | |

BIOLOGICAL ACTIVITY

| | |
|--------------------|---|
| Description | 3-Butylidene-phthalide (Butylidene-phthalide) is a phthalic anhydride derivative identified in Ligusticum chuanxiong Hort, and has larvicidal activity (LC ₅₀ of 1.56 mg/g for Spodoptera litura larvae) ^[1] . |
| In Vitro | 3-Butylidene-phthalide (Butylidene-phthalide) abrogates the myofibroblasts activation and mesenchymal transdifferentiation in oral submucous fibrosis ^[2] . MCE has not independently confirmed the accuracy of these methods. They are for reference only. |

REFERENCES

[1]. Yi Y, et al. Z-Ligustilide Exerted Hormetic Effect on Growth and Detoxification Enzymes of Spodoptera litura Larvae. Evid Based Complement Alternat Med. 2018 Jul 2;2018:7104513.

Caution: Product has not been fully validated for medical applications. For research use only.

Tel: 609-228-6898

Fax: 609-228-5909

E-mail: tech@MedChemExpress.com

Address: 1 Deer Park Dr, Suite Q, Monmouth Junction, NJ 08852, USA