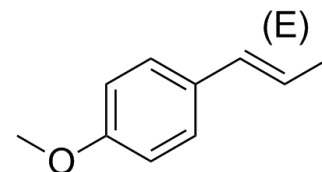


Trans-Anethole

Cat. No.:	HY-N0367		
CAS No.:	4180-23-8		
Molecular Formula:	C ₁₀ H ₁₂ O		
Molecular Weight:	148.2		
Target:	Others		
Pathway:	Others		
Storage:	Powder	-20°C	3 years
		4°C	2 years
	In solvent	-80°C	6 months
		-20°C	1 month



BIOLOGICAL ACTIVITY

Description

Trans-Anethole ((E)-Anethole), a phenylpropene derivative isolated from *Pimpinella*, shows estrogenic activity at lower concentrations and cytotoxic at higher concentrations in cancer cell lines^{[1][2]}. Trans-Anethole ((E)-Anethole) contributes a large component of the odor and flavor of anise and fennel, anise myrtle, liquorice, camphor, magnolia blossoms, and star anise^[3].

REFERENCES

- [1]. Tabanca N, et al. Estrogenic activity of isolated compounds and essential oils of *Pimpinella* species from Turkey, evaluated using a recombinant yeast screen. *Planta Med.* 2004 Aug;70(8):728-35.
- [2]. Nakagawa Y, et al. Cytotoxic and xenoestrogenic effects via biotransformation of trans-anethole on isolated rat hepatocytes and cultured MCF-7 human breast cancer cells. *Biochem Pharmacol.* 2003 Jul 1;66(1):63-73.
- [3]. Fahlbusch, et al. "Flavors and Fragrances", *Ullmann's Encyclopedia of Industrial Chemistry*, Weinheim: Wiley-VCH.

Caution: Product has not been fully validated for medical applications. For research use only.

Tel: 609-228-6898

Fax: 609-228-5909

E-mail: tech@MedChemExpress.com

Address: 1 Deer Park Dr, Suite Q, Monmouth Junction, NJ 08852, USA