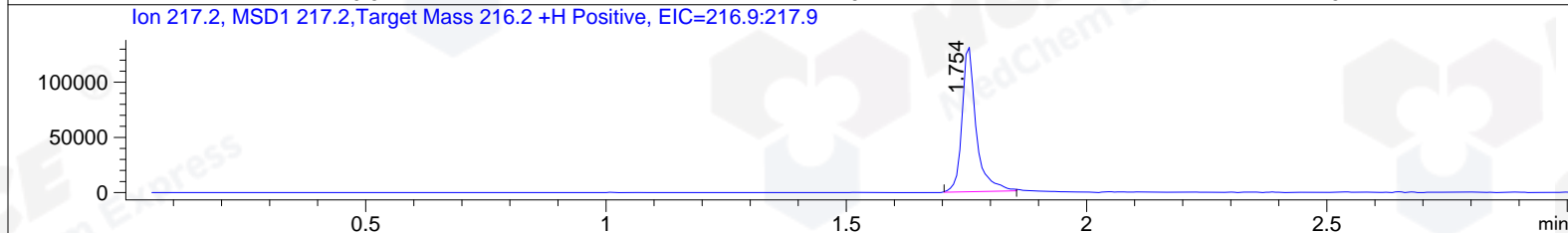
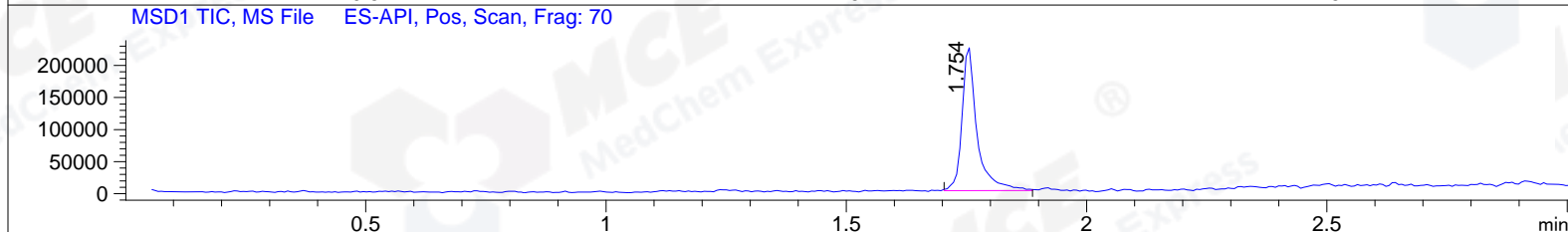
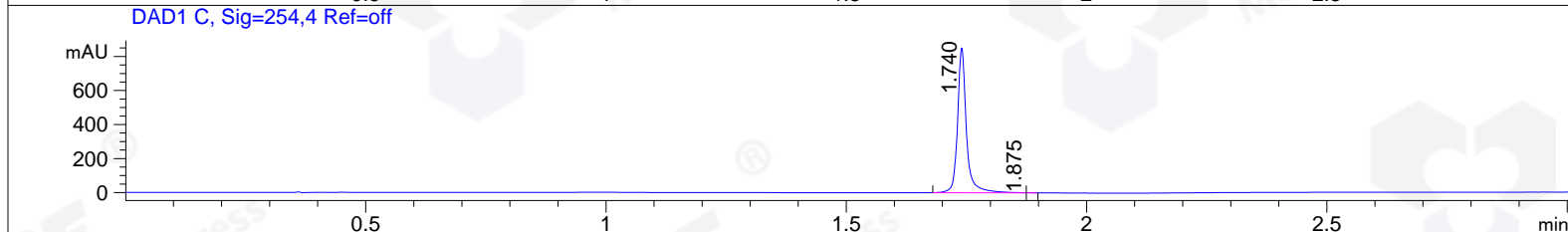
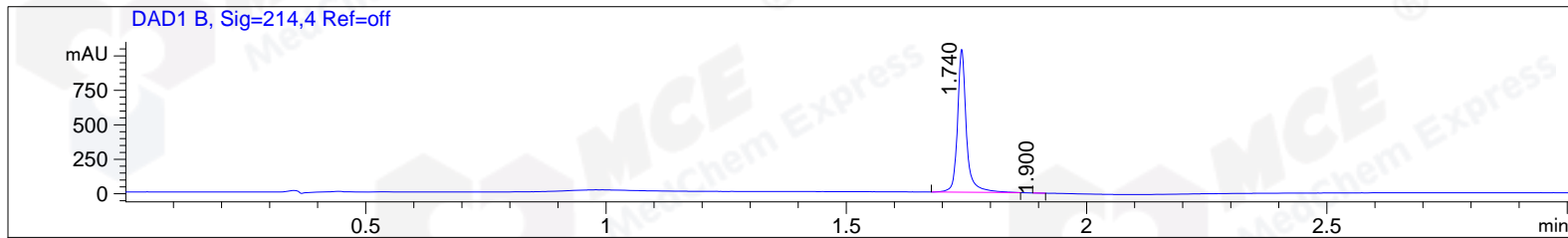


File ..DATA\2019\20190418\564\CPK2019-418-106491.D Tgt Mass (CHM) :
 Injection Date : 18 Apr 19 3:41 pm +0800 Seq. Line : 57
 Sample Name : CPK2019-418-10649 Location : P2-E-02
 Acq. Operator : LQ_1052 Inj : 1
 Spec. Reported : MS Integration Inj Volume : 1 ul
 Acq. Method : D:\Chem32\1\data\2019\20190418\564\1-POS-3MIN-1.M
 Analysis Method : D:\CHEM32\1\DATA\2019\20190418\564\1-POS-3MIN-1.M
 Catalog No : HY-N0370 Batch#10649
 Method Info : Mobile Phase: A: water(0.01%TFA) B:ACN(0.01%TFA)
 Gradient: 5% to 95%B within 1.3 min
 Flow Rate :1.8ml/min
 Column :SunFire C18, 4.6*50mm,3.5um A-RP-314
 Oven Temperature : 45



Integration Results for DAD1 B, Sig=214,4 Ref=off

RetTim	Width	Area	Height	Area%	MS(+)
1.74	0.02	1340.99	1036.67	99.96	217
1.90	0.02	0.56	0.50	0.04	217

Integration Results for DAD1 C, Sig=254,4 Ref=off

RetTim	Width	Area	Height	Area%	MS(+)
1.74	0.02	1097.35	851.04	99.96	217
1.87	0.10	0.40	0.56	0.04	217

Integration Results for MSD1 TIC, MS File

RetTim	Width	Area	Height	Area%	MS(+)
1.75	0.03	487180.41	225681.55	100.00	217

Ret. Time: 1.75

<<<< POSITIVE SPECTRA >>>>

ES-API Positive

