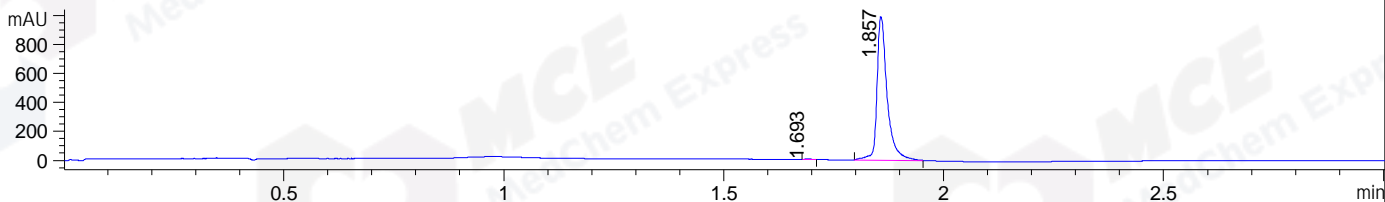
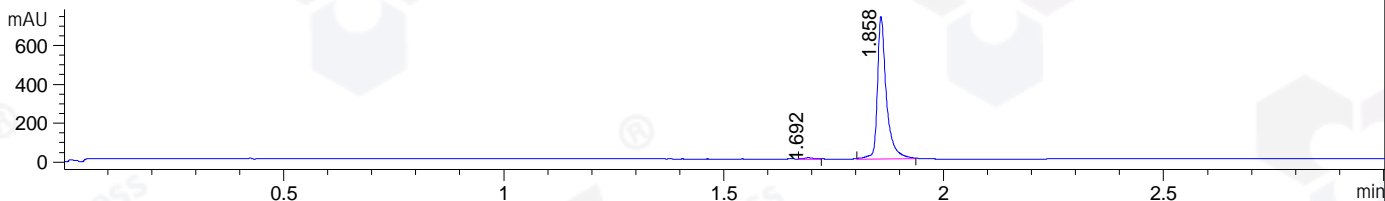


File ..\DATA\2019\20190302\553\CPK2019-228-20719.D Tgt Mass (CHM):
Injection Date : 2 Mar 19 12:03 pm +0800 Seq. Line : 17
Sample Name : CPK2019-228-20719 Location : P2-E-09
Acq. Operator : LQ_1052 Inj : 1
Spec. Reported : MS Integration Inj Volume : 1 ul
Acq. Method : D:\Chem32\1\data\2019\20190302\553\1-POS-3MIN-1.M
Analysis Method : D:\CHEM32\1\DATA\2019\20190302\553\1-POS-3MIN-1.M
Catalog No : HY-N0372 Batch#20719
Method Info : Mobile Phase: A: water(0.01%TFA) B:ACN(0.01%TFA)
Gradient: 5% to 95%B within 1.3 min
Flow Rate :1.8ml/min
Column :SunFire C18, 4.6*50mm,3.5um A-RP-314
Oven Temperature : 45

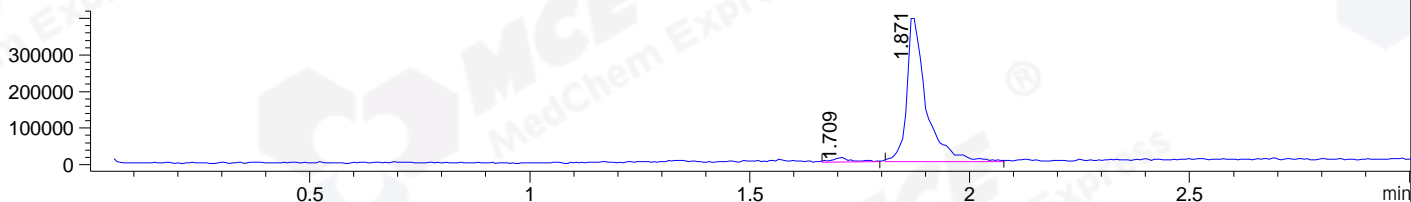
DAD1 B, Sig=214,4 Ref=off



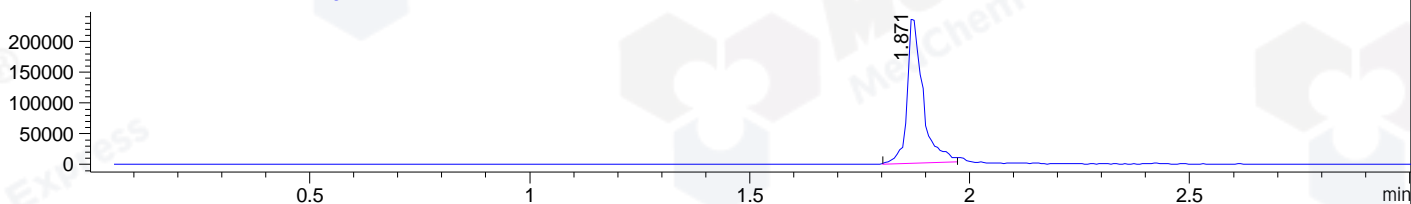
DAD1 C, Sig=254,4 Ref=off



MSD1 TIC, MS File ES-API, Pos, Scan, Frag: 70



Ion 339.4, MSD1 339.4, Target Mass 338.4 +H Positive, EIC=339.1:340.1



Integration Results for DAD1 B, Sig=214,4 Ref=off

RetTim	Width	Area	Height	Area%	MS (+)
1.69	0.02	4.45	4.42	0.28	269
1.86	0.02	1613.00	994.27	99.72	339

Integration Results for DAD1 C, Sig=254,4 Ref=off

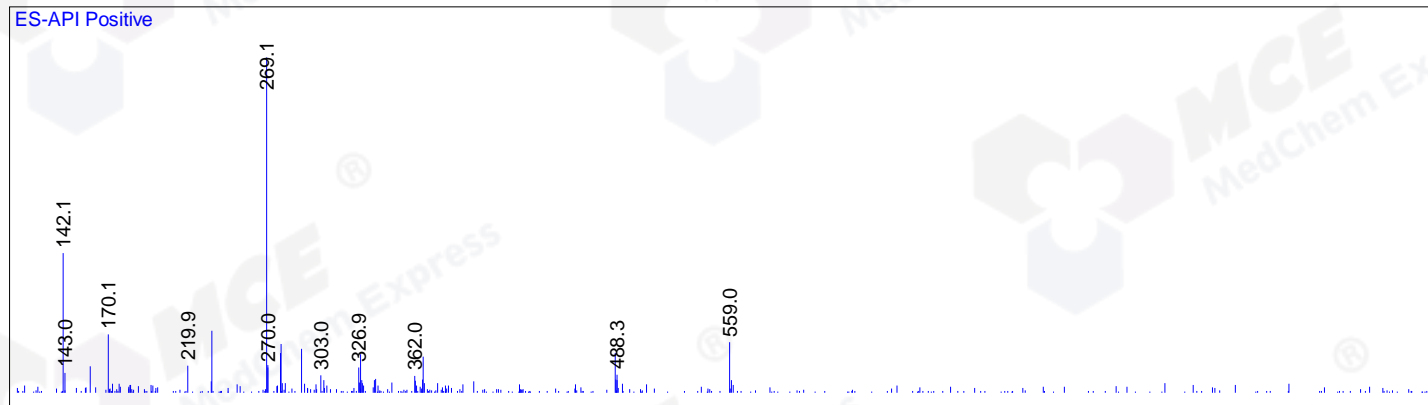
RetTim	Width	Area	Height	Area%	MS (+)
1.69	0.02	8.43	6.74	0.80	269
1.86	0.02	1045.87	734.18	99.20	339

Integration Results for MSD1 TIC, MS File

RetTim	Width	Area	Height	Area%	MS (+)
1.71	0.04	40251.36	12739.37	3.21	269
1.87	0.05	1213111.63	399263.66	96.79	339

Ret. Time: 1.71

<<<< POSITIVE SPECTRA >>>>



Ret. Time: 1.87

