

File ..\DATA\2019\20190414\561\BIZ2019-412-WYQ18.D Tgt Mass (CHM):

Injection Date : 14 Apr 19 1:20 pm +0800 Seq. Line : 47

Sample Name : BIZ2019-412-WYQ18 Location : P1-C-07

Acq. Operator : LQ_1052 Inj : 1

Spec. Reported : MS Integration Inj Volume : 1 ul

Acq. Method : D:\Chem32\1\data\2019\20190414\561\1-POS-3MIN-1.M

Analysis Method : D:\CHEM32\1\DATA\2019\20190414\561\1-POS-3MIN-1.M

Catalog No : HY-N0376 Batch#39942

Method Info : Mobile Phase: A: water(0.01%TFA) B:ACN(0.01%TFA)

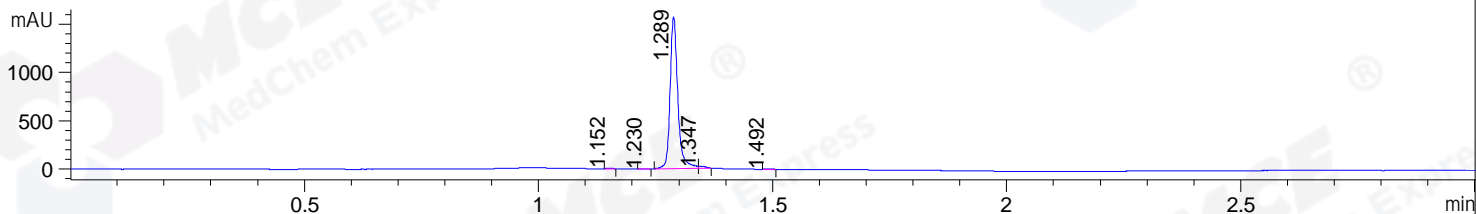
Gradient: 5% to 95%B within 1.3 min

Flow Rate :1.8ml/min

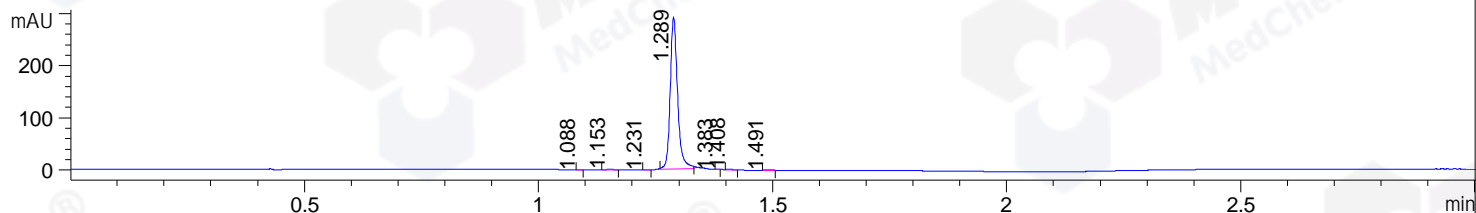
Column :SunFire C18, 4.6*50mm,3.5um A-RP-314

Oven Temperature : 45

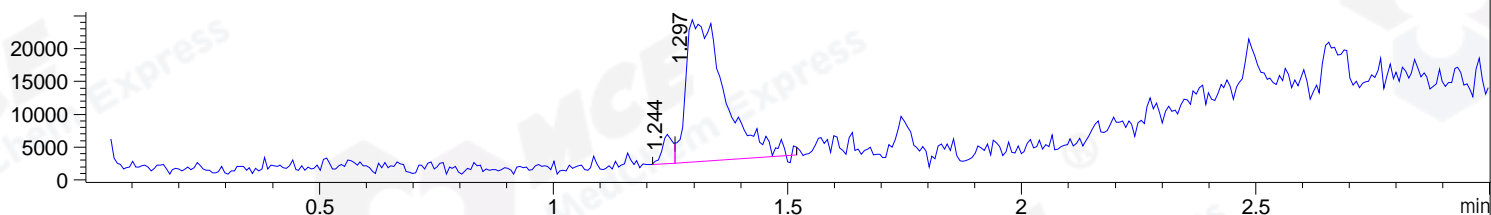
DAD1 B, Sig=214,4 Ref=off



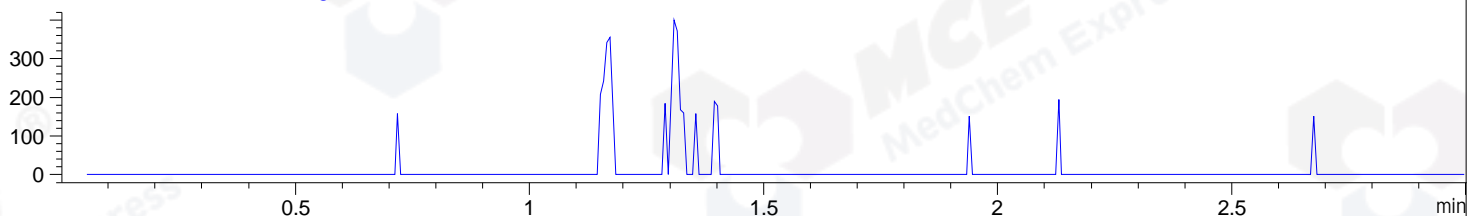
DAD1 C, Sig=254,4 Ref=off



MSD1 TIC, MS File ES-API, Pos, Scan, Frag: 70



Ion 419.1, MSD1 419.1, Target Mass 418.1 +H Positive, EIC=418.8:419.8



Integration Results for DAD1 B, Sig=214,4 Ref=off

RetTim	Width	Area	Height	Area%	MS (+)
1.15	0.01	4.93	5.93	0.27	ND
1.23	0.02	3.33	3.15	0.18	251
1.29	0.02	1800.07	1570.43	98.07	257
1.35	0.02	22.97	23.46	1.25	257
1.49	0.02	4.11	4.27	0.22	ND

Integration Results for DAD1 C, Sig=254,4 Ref=off

RetTim	Width	Area	Height	Area%	MS (+)
1.09	0.01	0.13	0.24	0.04	ND
1.15	0.02	1.71	1.84	0.53	ND
1.23	0.01	0.18	0.32	0.06	251
1.29	0.02	319.70	291.14	98.84	257
1.38	0.01	0.11	0.26	0.03	257
1.41	0.01	0.87	1.10	0.27	257
1.49	0.01	0.73	0.83	0.23	ND

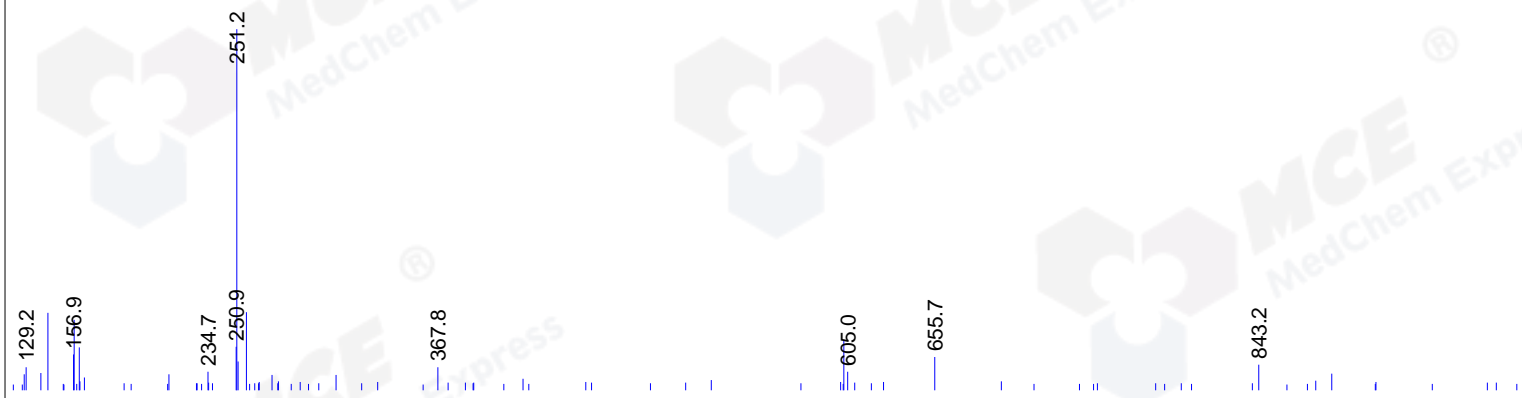
Integration Results for MSD1 TIC, MS File

RetTim	Width	Area	Height	Area%	MS (+)
1.24	0.02	6950.56	4424.29	5.26	251
1.30	0.07	125294.16	21683.05	94.74	257

Ret. Time: 1.24

<<<< POSITIVE SPECTRA >>>>

ES-API Positive



Ret. Time: 1.30

ES-API Positive

