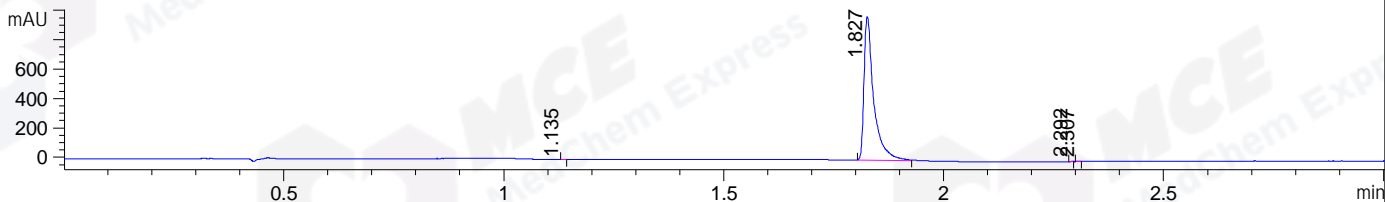
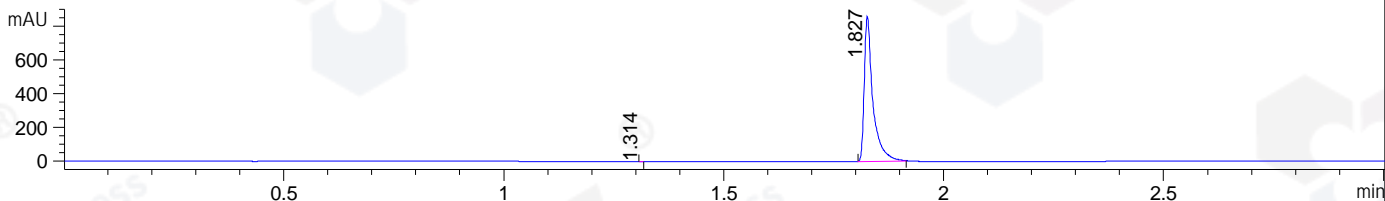


File ..\DATA\2019\20190302\555\CPK2019-221-20653.D Tgt Mass (CHM):
 Injection Date : 2 Mar 19 4:42 pm +0800 Seq. Line : 5
 Sample Name : CPK2019-221-20653 Location : P1-B-06
 Acq. Operator : LQ_1052 Inj : 1
 Spec. Reported : MS Integration Inj Volume : 1 ul
 Acq. Method : D:\Chem32\1\data\2019\20190302\555\1-POS-3MIN-1.M
 Analysis Method : D:\CHEM32\1\DATA\2019\20190302\555\1-POS-3MIN-1.M
 Catalog No : HY-N0382 Batch#20653
 Method Info : Mobile Phase: A: water(0.01%TFA) B:ACN(0.01%TFA)
 Gradient: 5% to 95%B within 1.3 min
 Flow Rate :1.8ml/min
 Column :SunFire C18, 4.6*50mm,3.5um A-RP-314
 Oven Temperature : 45

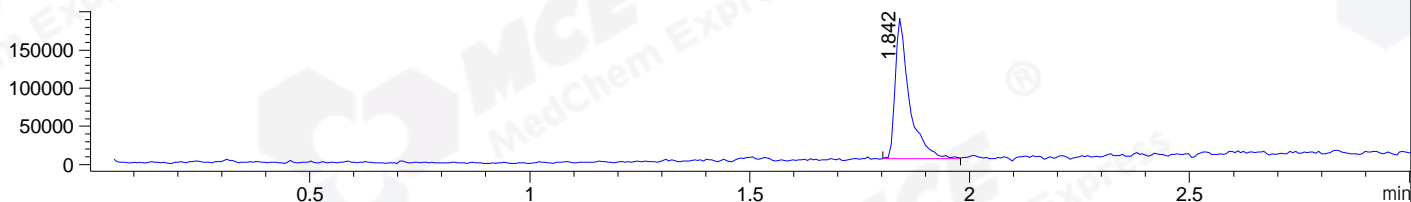
DAD1 B, Sig=214,4 Ref=off



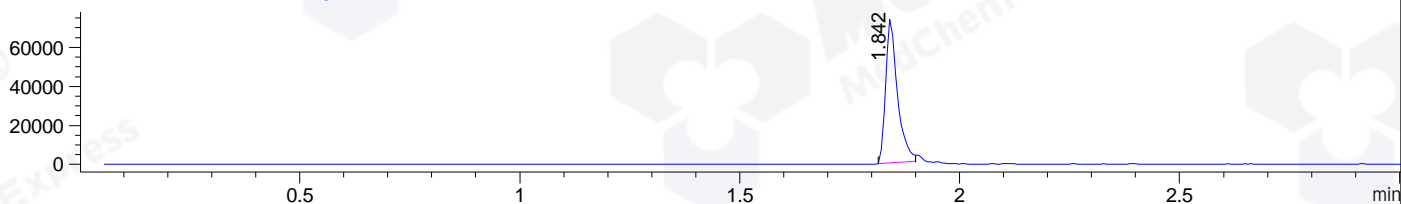
DAD1 C, Sig=254,4 Ref=off



MSD1 TIC, MS File ES-API, Pos, Scan, Frag: 70



Ion 271.2, MSD1 271.2, Target Mass 270.2 +H Positive, EIC=270.9:271.9



Integration Results for DAD1 B, Sig=214,4 Ref=off

| RetTim | Width | Area | Height | Area% | MS (+) |
|--------|-------|---------|--------|-------|--------|
| 1.13 | 0.01 | 0.23 | 0.57 | 0.02 | ND |
| 1.83 | 0.02 | 1502.94 | 977.35 | 99.96 | 271 |
| 2.29 | 0.01 | 0.10 | 0.30 | 0.01 | 142 |
| 2.31 | 0.01 | 0.23 | 0.50 | 0.02 | 142 |

Integration Results for DAD1 C, Sig=254,4 Ref=off

| RetTim | Width | Area | Height | Area% | MS (+) |
|--------|-------|---------|--------|-------|--------|
| 1.31 | 0.01 | 0.17 | 0.50 | 0.01 | ND |
| 1.83 | 0.02 | 1182.53 | 861.50 | 99.99 | 271 |

Integration Results for MSD1 TIC, MS File

| RetTim | Width | Area | Height | Area% | MS (+) |
|--------|-------|-----------|-----------|--------|--------|
| 1.84 | 0.03 | 414310.22 | 184121.08 | 100.00 | 271 |

Ret. Time: 1.84

<<<< POSITIVE SPECTRA >>>>

ES-API Positive

