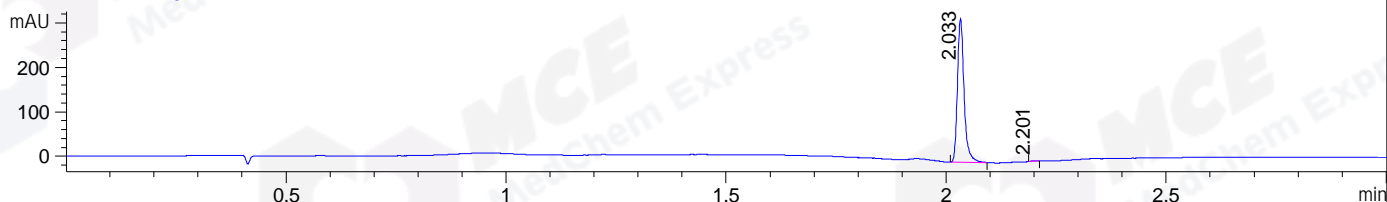
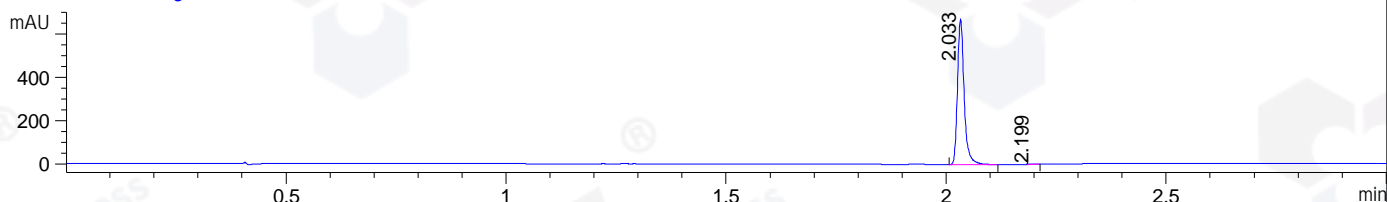


File ..\DATA\2020\20201022\1133\BIZ2020-O20-WMX2.D Tgt Mass (CHM):
Injection Date : 22 Oct 20 7:54 pm +0800 Seq. Line : 62
Sample Name : BIZ2020-O20-WMX2 Location : P1-B-01
Acq. Operator : zyj_1547 Inj : 1
Spec. Reported : MS Integration Inj Volume : 1 ul
Acq. Method : D:\Chem32\1\data\2020\20201022\1133\1-POS-3MIN.M
Analysis Method : D:\CHEM32\1\DATA\2020\20201022\1133\1-POS-3MIN.M
CAS NO. : 57-83-0
Method Info : Mobile Phase: A: water(0.01%TFA) B:ACN(0.01%TFA)
Gradient: 5% to 95%B within 1.3 min
Flow Rate :1.8ml/min
Column :SunFire C18, 4.6*50mm,3.5um A-RP-624

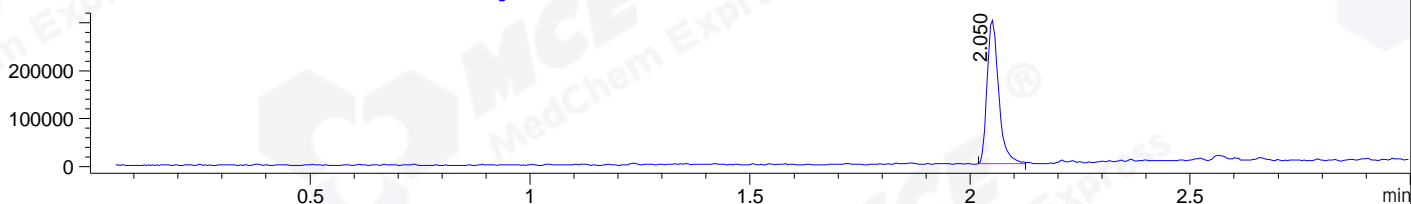
DAD1 B, Sig=214,4 Ref=off



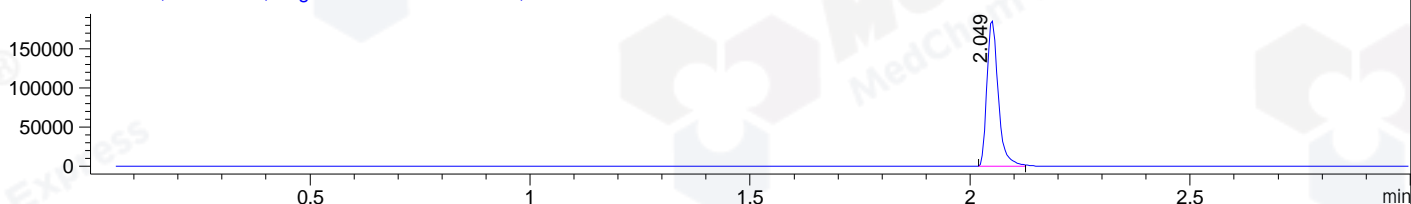
DAD1 C, Sig=254,4 Ref=off



MSD1 TIC, MS File ES-API, Pos, Scan, Frag: 70



Ion 315, MSD1 315, Target Mass 314 +H Positive, EIC=314.7:315.7



Integration Results for DAD1 B, Sig=214,4 Ref=off

RetTim	Width	Area	Height	Area%	MS (+)
2.03	0.02	339.60	324.55	99.66	315
2.20	0.02	1.17	1.28	0.34	ND

Integration Results for DAD1 C, Sig=254,4 Ref=off

RetTim	Width	Area	Height	Area%	MS (+)
2.03	0.02	710.38	672.59	99.78	315
2.20	0.02	1.59	1.74	0.22	ND

Integration Results for MSD1 TIC, MS File

RetTim	Width	Area	Height	Area%	MS (+)
2.05	0.03	549555.94	300913.25	100.00	315

Ret. Time: 2.05

<<<< POSITIVE SPECTRA >>>>

ES-API Positive

