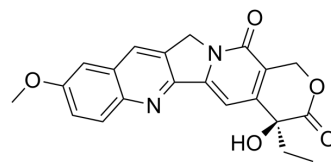


## 10-Methoxycamptothecin

Cat. No.:	HY-N0446
CAS No.:	19685-10-0
Molecular Formula:	C <sub>21</sub> H <sub>18</sub> N <sub>2</sub> O <sub>5</sub>
Molecular Weight:	378.38
Target:	Others
Pathway:	Others
Storage:	4°C, protect from light * In solvent : -80°C, 6 months; -20°C, 1 month (protect from light)



### SOLVENT & SOLUBILITY

In Vitro	DMSO : 8.33 mg/mL (22.01 mM); Need ultrasonic						
	Preparing Stock Solutions	Solvent Concentration	Mass	1 mg	5 mg	10 mg	
				1 mM	2.6428 mL	13.2142 mL	26.4285 mL
				5 mM	0.5286 mL	2.6428 mL	5.2857 mL
				10 mM	0.2643 mL	1.3214 mL	2.6428 mL
Please refer to the solubility information to select the appropriate solvent.							
In Vivo	1. Add each solvent one by one: 10% DMSO >> 40% PEG300 >> 5% Tween-80 >> 45% saline Solubility: 0.83 mg/mL (2.19 mM); Suspended solution; Need ultrasonic						
	2. Add each solvent one by one: 10% DMSO >> 90% (20% SBE-β-CD in saline) Solubility: ≥ 0.83 mg/mL (2.19 mM); Clear solution						
	3. Add each solvent one by one: 10% DMSO >> 90% corn oil Solubility: ≥ 0.83 mg/mL (2.19 mM); Clear solution						

### BIOLOGICAL ACTIVITY

Description	10-Methoxycamptothecin is a natural bioactive derivative of camptothecin (CPT) isolated from <i>Camptotheca acuminata</i> , and has been confirmed to possess high anti-cancer properties. 10-Methoxycamptothecin has higher cytotoxicity than 10-hydroxycamptothecin by testing antitumor activity against 2774 cell lines <sup>[1]</sup> .
-------------	--

### REFERENCES

[1]. Zheng J, et al. Development and validation of a RP-HPLC method with fluorescence detection for simultaneous determination of 10-methoxycamptothecin and its

**Caution: Product has not been fully validated for medical applications. For research use only.**

Tel: 609-228-6898

Fax: 609-228-5909

E-mail: [tech@MedChemExpress.com](mailto:tech@MedChemExpress.com)

Address: 1 Deer Park Dr, Suite Q, Monmouth Junction, NJ 08852, USA