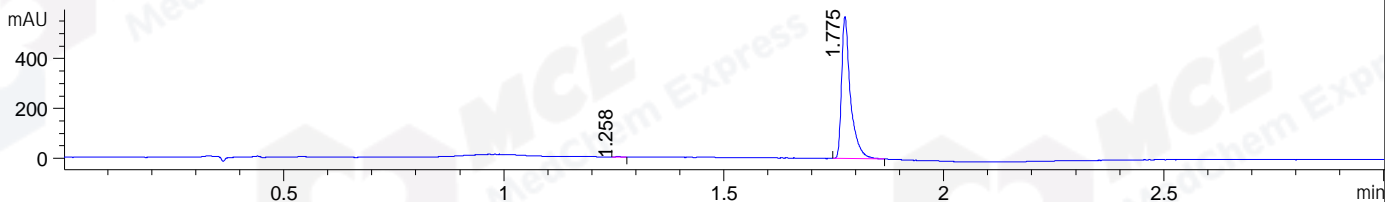
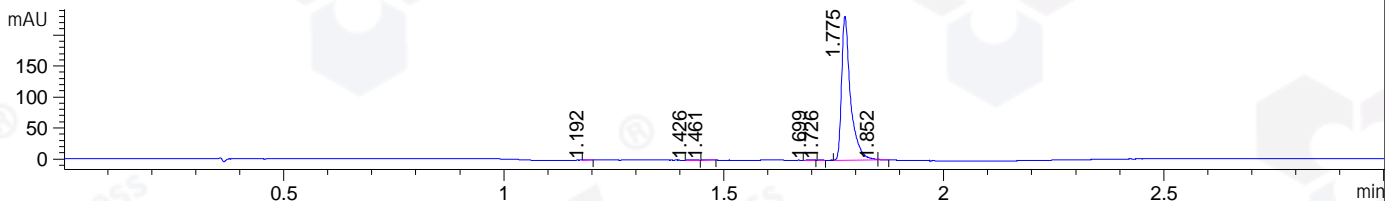


File ..DATA\2019\20191228\796\CPK2019-D27-24251-.D Tgt Mass (CHM):
Injection Date : 28 Dec 19 3:16 pm +0800 Seq. Line : 83
Sample Name : CPK2019-D27-24251 Location : P1-E-06
Acq. Operator : ZJ_1432 Inj : 1
Spec. Reported : MS Integration Inj Volume : 1.2 ul
Acq. Method : D:\Chem32\1\data\2019\20191228\796\1-POS-3MIN.M
Analysis Method : D:\CHEM32\1\DATA\2019\20191228\796\1-POS-3MIN.M
Catalog No : HY-N0451 Batch#24251
Method Info : Mobile Phase: A: water(0.01%TFA) B:ACN(0.01%TFA)
Gradient: 5% to 95%B within 1.3 min
Flow Rate :1.8ml/min
Column :SunFire C18, 4.6*50mm,3.5um A-RP-433
Oven Temperature : 45

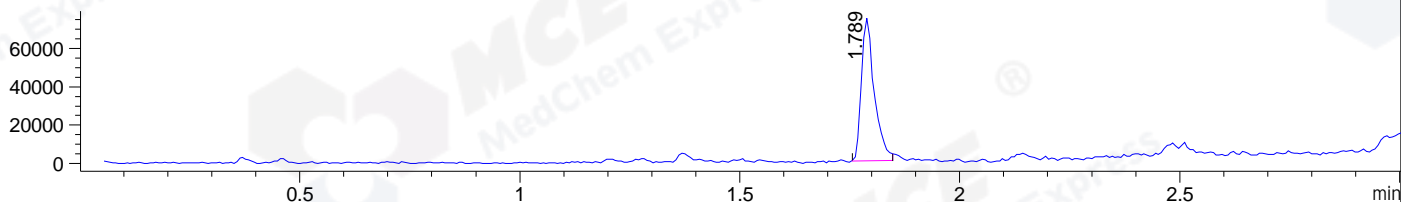
DAD1 B, Sig=214,4 Ref=off



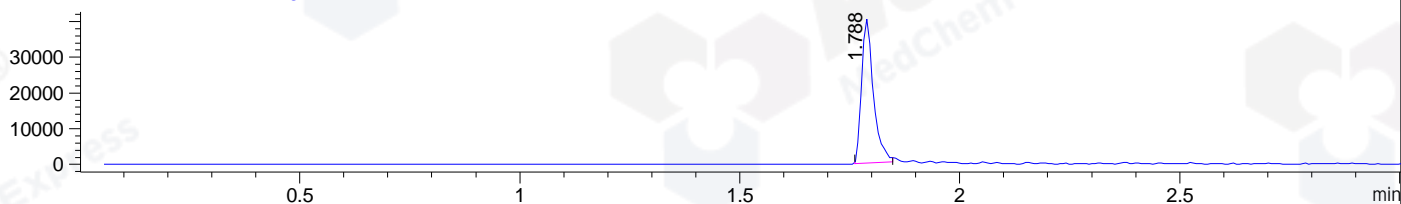
DAD1 C, Sig=254,4 Ref=off



MSD1 TIC, MS File ES-API, Pos, Scan, Frag: 70



Ion 285, MSD1 285, Target Mass 284 +H Positive, EIC=284.7:285.7



Integration Results for DAD1 B, Sig=214,4 Ref=off

RetTim	Width	Area	Height	Area%	MS (+)
1.26	0.02	1.28	1.29	0.16	ND
1.78	0.02	798.54	571.05	99.84	285

Integration Results for DAD1 C, Sig=254,4 Ref=off

RetTim	Width	Area	Height	Area%	MS (+)
1.19	0.01	0.35	0.62	0.11	ND
1.43	0.02	0.39	0.33	0.12	ND
1.46	0.02	0.74	0.75	0.22	ND
1.70	0.02	0.46	0.48	0.14	ND
1.73	0.01	0.19	0.27	0.06	ND
1.78	0.02	326.58	232.57	99.14	285
1.85	0.01	0.70	1.00	0.21	285

Integration Results for MSD1 TIC, MS File

RetTim	Width	Area	Height	Area%	MS (+)
--------	-------	------	--------	-------	--------

1.79 0.03 151065.17 74158.14 100.00 285

Ret. Time: 1.79

<<<< POSITIVE SPECTRA >>>>

ES-API Positive

