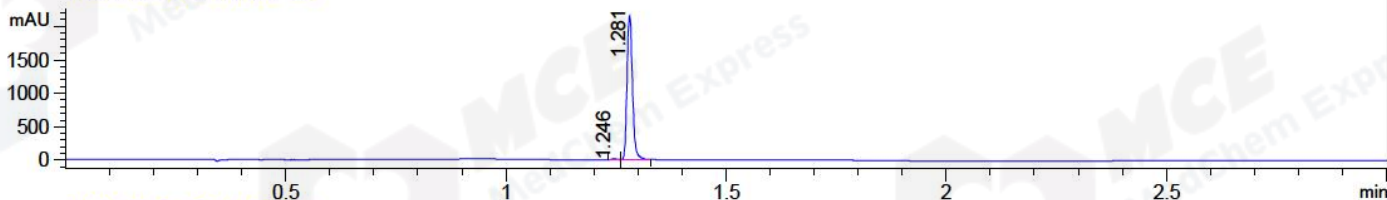


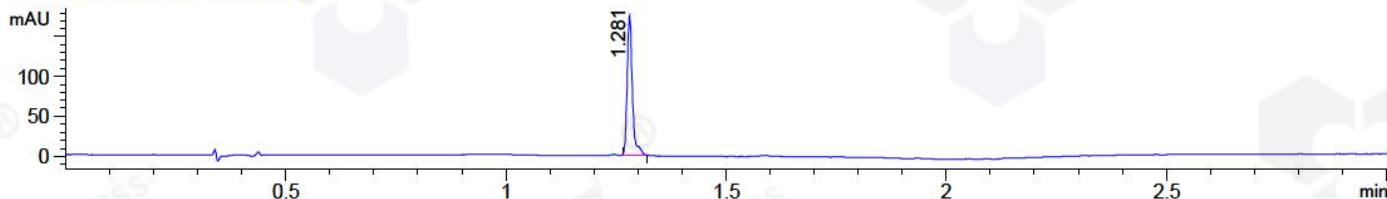
File ..1\DATA\2018\20180718\317\BIZ2018-718-WYQ1.D Tgt Mass (CHM):

Injection Date : 18 Jul 18 5:25 pm +0800 Seq. Line : 20
 Sample Name : BIZ2018-718-WYQ1 Location : P1-D-06
 Acq. Operator : LQ_1052 Inj : 1
 Spec. Reported : MS Integration Inj Volume : 1 ul
 Acq. Method : D:\Chem32\1\data\2018\20180718\317\1-POS-3MIN-1.M
 Analysis Method : D:\CHEM32\1\DATA\2018\20180718\317\1-POS-3MIN-1.M
 Catalog No : HY-N0509 Batch#31587 A-RP-314
 Method Info : Mobile Phase: A: water(0.01%TFA) B:ACN(0.01%TFA)
 Gradient: 5% to 95%B within 1.3 min
 Flow Rate :1.8ml/min
 Column :SunFire C18, 4.6*50mm,3.5um A-RP-314
 Oven Temperature : 45□

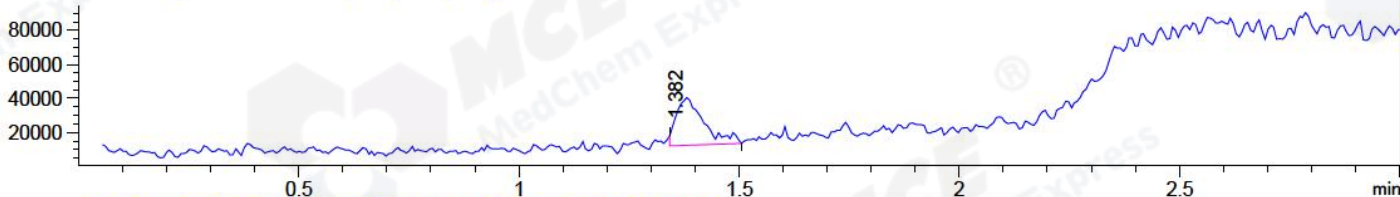
DAD1 B, Sig=214,4 Ref=off



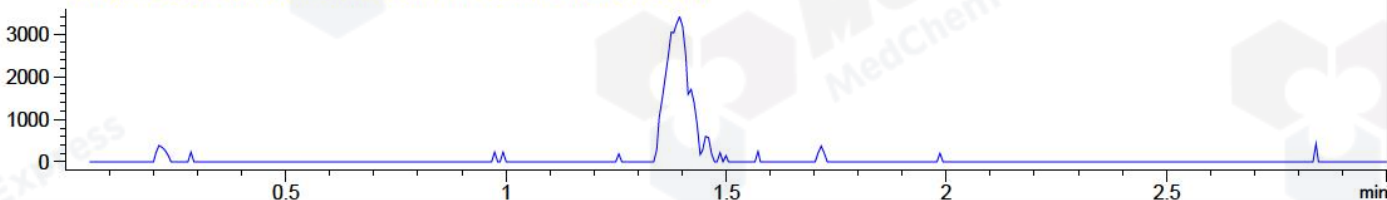
DAD1 C, Sig=254,4 Ref=off



MSD1 TIC, MS File ES-API, Pos, Scan, Frag: 70



Ion 451.1, MSD1 451.1, Target Mass 450.1 +H Positive, EIC=450.8:451.8



Integration Results for DAD1 B, Sig=214,4 Ref=off

RetTim	Width	Area	Height	Area%	MS (+)
1.25	0.01	10.84	14.55	0.57	ND
1.28	0.01	1874.62	2151.73	99.43	141

Integration Results for DAD1 C, Sig=254,4 Ref=off

RetTim	Width	Area	Height	Area%	MS (+)
1.28	0.01	146.46	175.55	100.00	141

Integration Results for MSD1 TIC, MS File

RetTim	Width	Area	Height	Area%	MS (+)
1.38	0.06	121788.09	28018.71	100.00	305

Ret. Time: 1.38

<<< POSITIVE SPECTRA >>>

