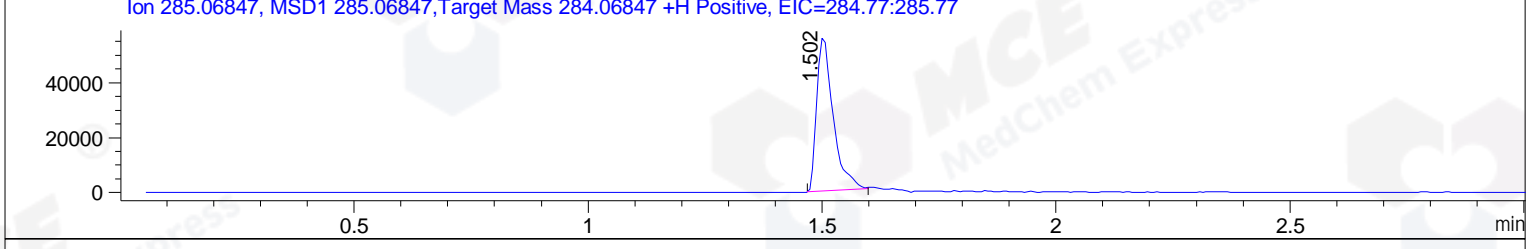
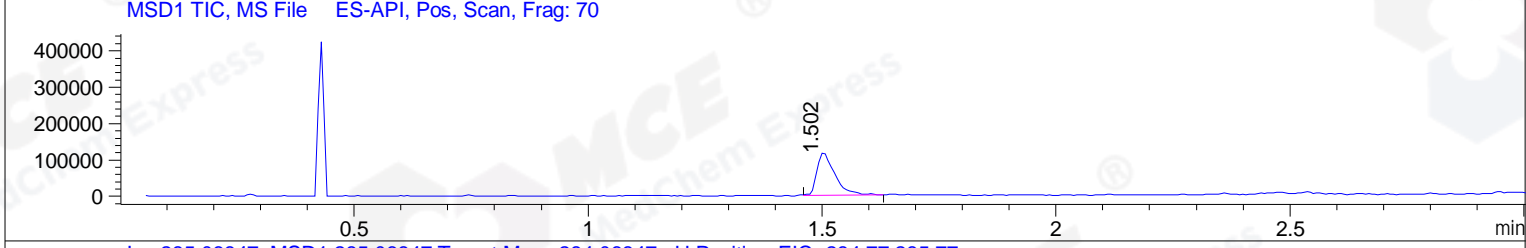
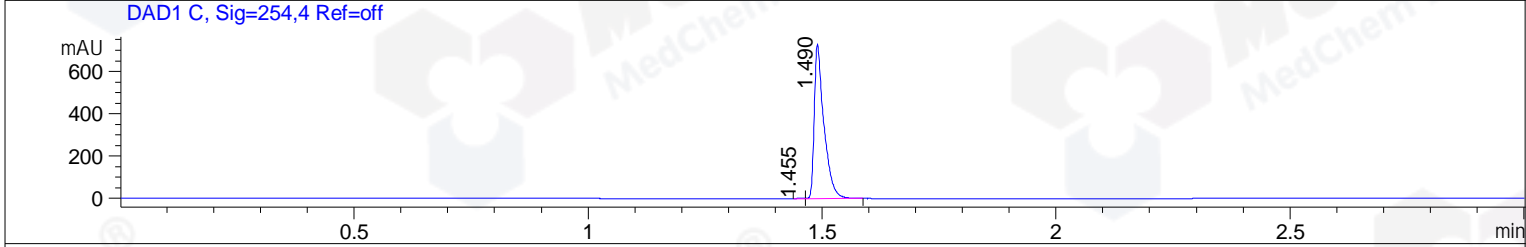
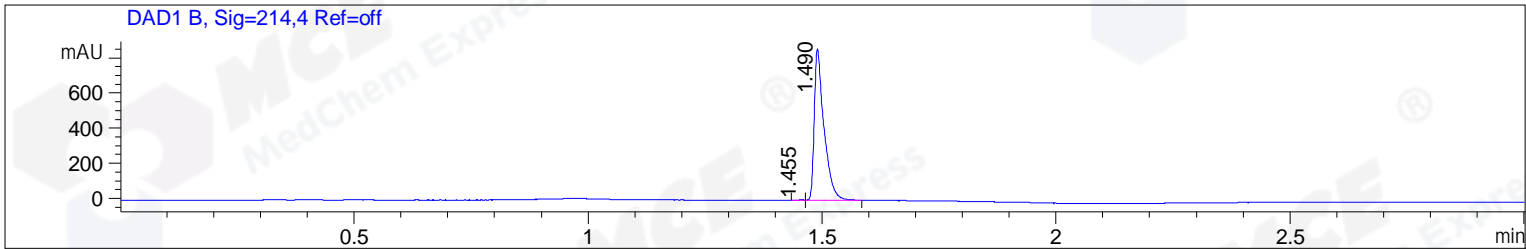


File ..DATA\2019\20191008\720\CPK2019-008-23300-.D Tgt Mass (CHM):
 Injection Date : 8 Oct 19 4:22 pm +0800 Seq. Line : 74
 Sample Name : CPK2019-008-23300 Location : P1-C-08
 Acq. Operator : ZJ_1432 Inj : 1
 Spec. Reported : MS Integration Inj Volume : 0.5 ul
 Acq. Method : D:\Chem32\1\data\2019\20191008\720\1-POS-3MIN.M
 Analysis Method : D:\CHEM32\1\DATA\2019\20191008\720\1-POS-3MIN.M
 Catalog No : HY-N0519 Batch#23300
 Method Info : Mobile Phase: A: water(0.01%TFA) B:ACN(0.01%TFA)
 Gradient: 5% to 95%B within 1.3 min
 Flow Rate :1.8ml/min
 Column :SunFire C18, 4.6*50mm,3.5um A-RP-433
 Oven Temperature : 45



Integration Results for DAD1 B, Sig=214,4 Ref=off

RetTim	Width	Area	Height	Area%	MS (+)
1.46	0.02	1.33	1.45	0.11	ND
1.49	0.02	1240.05	862.83	99.89	285

Integration Results for DAD1 C, Sig=254,4 Ref=off

RetTim	Width	Area	Height	Area%	MS (+)
1.45	0.02	2.14	2.10	0.20	ND
1.49	0.02	1044.66	731.04	99.80	285

Integration Results for MSD1 TIC, MS File

RetTim	Width	Area	Height	Area%	MS (+)
1.50	0.04	310385.47	117855.55	100.00	285

Ret. Time: 1.50

<<<< POSITIVE SPECTRA >>>>

ES-API Positive

