

File ..DATA\2020\20200630\1020\BIZ2020-629-SCH1-.D Tgt Mass (CHM):

Injection Date : 30 Jun 20 11:05 am +0800 Seq. Line : 32

Sample Name : BIZ2020-629-SCH1 Location : P1-B-01

Acq. Operator : ZJ_1432 Inj : 1

Spec. Reported : MS Integration Inj Volume : 0.5 ul

Acq. Method : D:\Chem32\1\data\2020\20200630\1020\1-POS-3MIN.M

Analysis Method : D:\CHEM32\1\DATA\2020\20200630\1020\1-POS-3MIN.M

Catalog No : HY-N0540

Method Info : Mobile Phase: A: water(0.01%TFA) B:ACN(0.01%TFA)

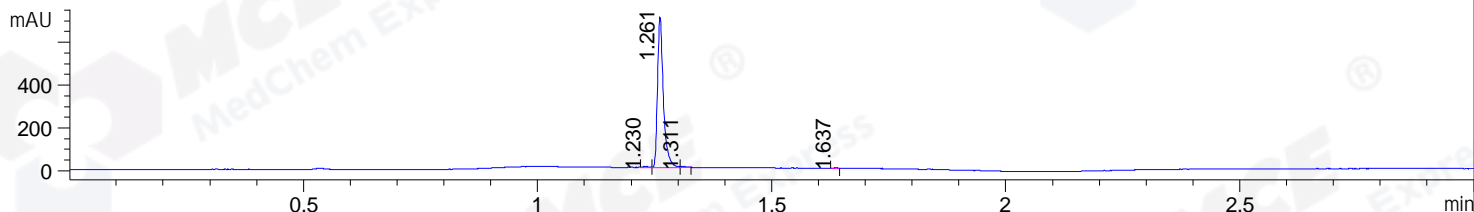
Gradient: 5% to 95%B within 1.3 min

Flow Rate :1.8ml/min

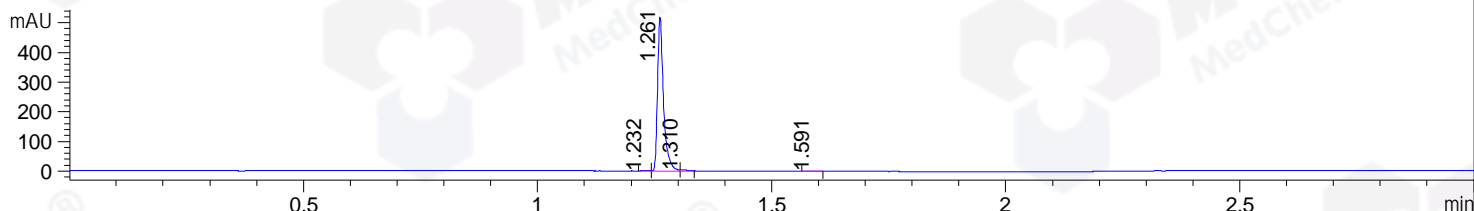
Column :SunFire C18, 4.6*50mm,3.5um A-RP-607

Oven Temperature : 45

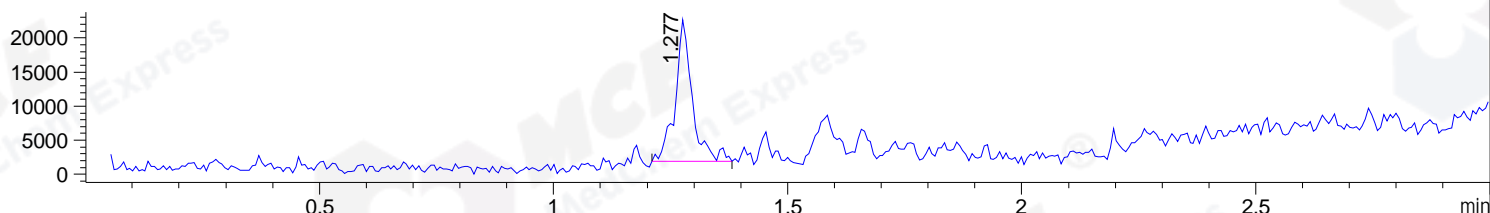
DAD1 B, Sig=214,4 Ref=off



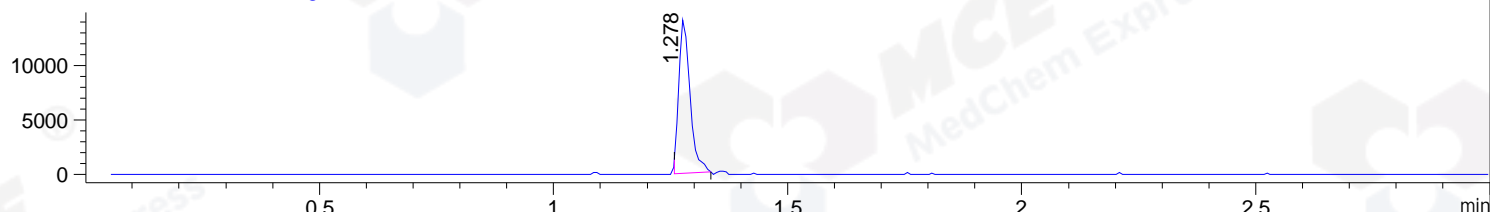
DAD1 C, Sig=254,4 Ref=off



MSD1 TIC, MS File ES-API, Pos, Scan, Frag: 70



Ion 449, MSD1 449, Target Mass 448 +H Positive, EIC=448.7:449.7



Integration Results for DAD1 B, Sig=214,4 Ref=off

RetTim	Width	Area	Height	Area%	MS (+)
1.23	0.01	3.95	5.02	0.64	294
1.26	0.01	611.14	703.95	98.67	449
1.31	0.01	3.39	4.53	0.55	449
1.64	0.01	0.89	1.63	0.14	ND

Integration Results for DAD1 C, Sig=254,4 Ref=off

RetTim	Width	Area	Height	Area%	MS (+)
1.23	0.01	1.53	1.87	0.33	294
1.26	0.01	460.16	519.09	98.58	449
1.31	0.01	3.69	4.18	0.79	449
1.59	0.02	1.39	1.15	0.30	303

Integration Results for MSD1 TIC, MS File

RetTim	Width	Area	Height	Area%	MS (+)
1.28	0.04	52416.77	20762.64	100.00	449

Ret. Time: 1.28

<<<< POSITIVE SPECTRA >>>>

ES-API Positive

