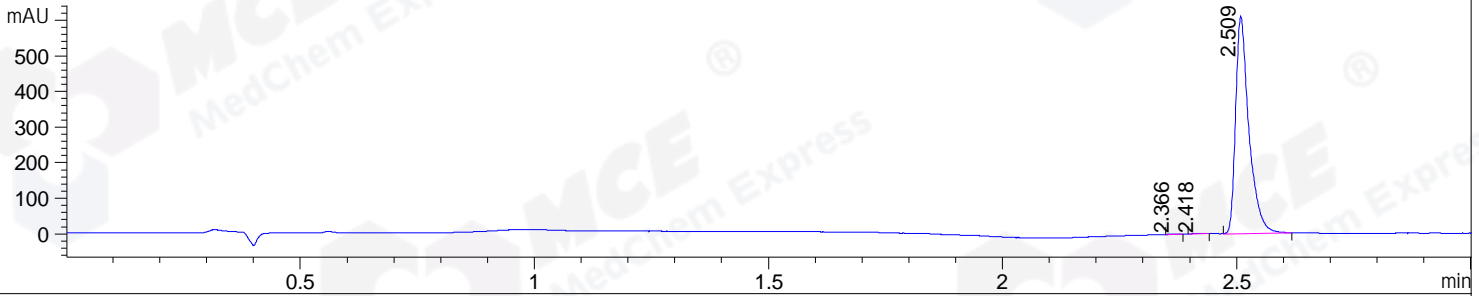
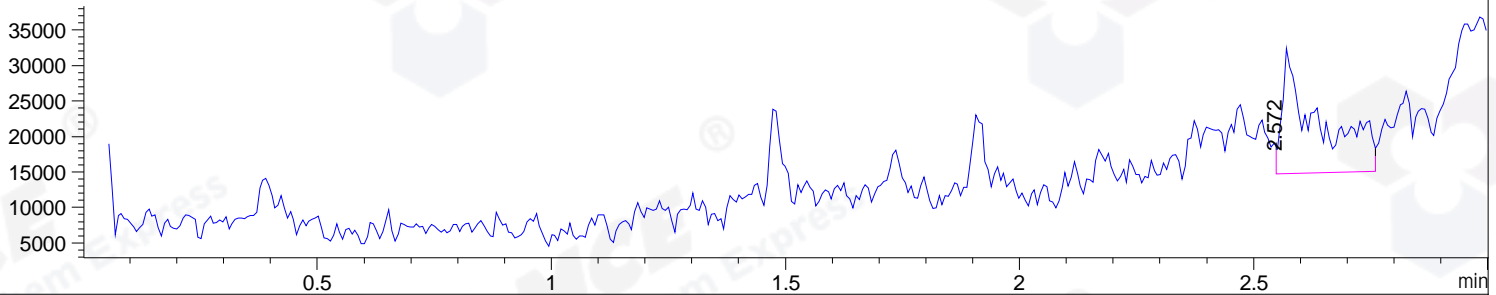


File ..\DATA\2019\20190926\720\BIZ2019-925-CXL8.D Tgt Mass (CHM):
 Injection Date : 26 Sep 19 1:17 pm +0800 Seq. Line : 51
 Sample Name : BIZ2019-925-CXL8 Location : P1-B-01
 Acq. Operator : bgd_1571 Inj : 1
 Spec. Reported : MS Integration Inj Volume : 6 ul
 Acq. Method : D:\Chem32\1\data\2019\20190926\720\1-POS-3MIN.M
 Analysis Method : D:\CHEM32\1\DATA\2019\20190926\720\1-POS-3MIN.M
 Catalog No : HY-N0549 Batch#46433
 Method Info : Mobile Phase: A: water(0.01%TFA) B:ACN(0.01%TFA)
 Gradient: 5% to 95%B within 1.3 min
 Flow Rate :1.8ml/min
 Column :SunFire C18, 4.6*50mm,3.5um A-RP-433
 Oven Temperature : 45

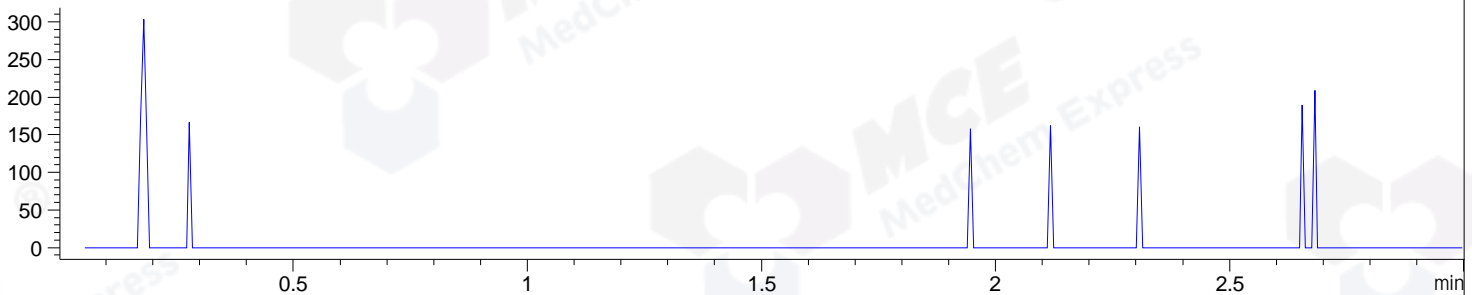
DAD1 B, Sig=214,4 Ref=off



MSD1 TIC, MS File ES-API, Pos, Scan, Frag: 70



Ion 137.13, MSD1 137.13, Target Mass 136.13 +H Positive, EIC=136.83:137.83



Integration Results for DAD1 B, Sig=214,4 Ref=off

RetTim	Width	Area	Height	Area%	MS (+)
2.37	0.02	1.69	1.41	0.14	130
2.42	0.02	2.73	1.93	0.23	130
2.51	0.03	1204.47	609.57	99.63	130

Integration Results for MSD1 TIC, MS File

RetTim	Width	Area	Height	Area%	MS (+)
2.57	0.09	93243.89	17902.73	100.00	130

Ret. Time: 2.57

<<<< POSITIVE SPECTRA >>>>

ES-API Positive

