

Sample Name: LJ2017-0828-0071

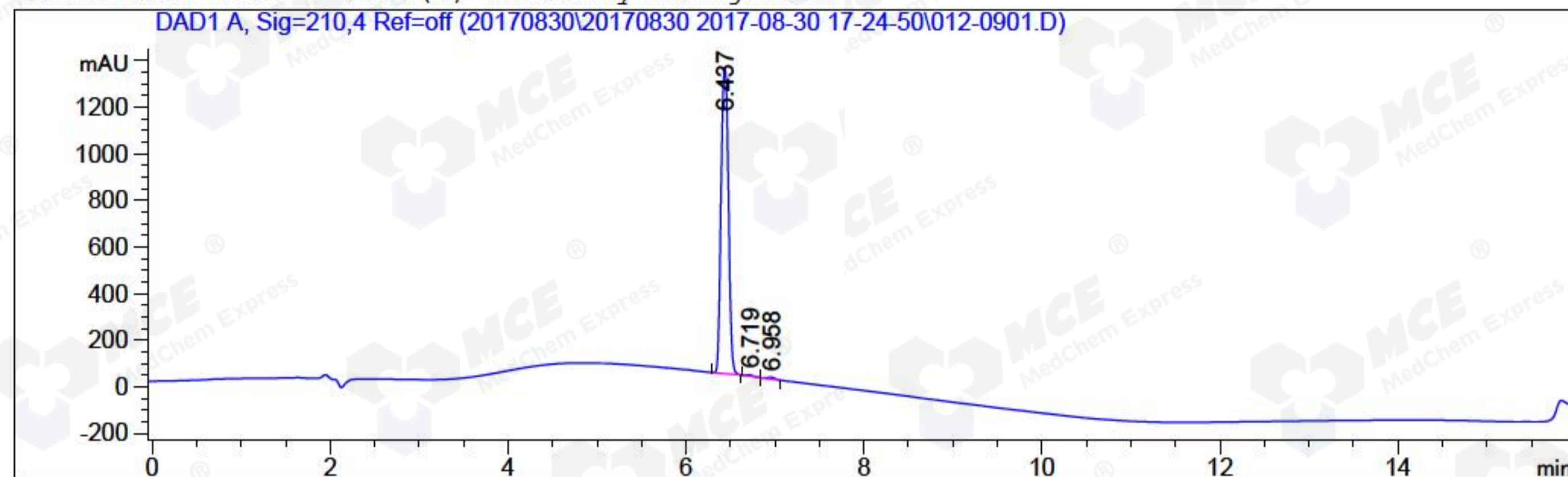
```

=====
Acq. Operator   : ZLL                               Seq. Line :    9
Acq. Instrument : HPLC-12                           Location  : Vial 12
Injection Date  : 2017-08-30 08:27:56                Inj       :    1
                                                    Inj Volume: 5.0 µl

Acq. Method    : C:\CHEM32\2\DATA\20170830\20170830 2017-08-30 17-24-50\10-80A,210NM.M
Last changed   : 2017-08-30 05:28:36 by ZLL
                (modified after loading)
Analysis Method : C:\CHEM32\2\METHODS\10-80A,210NM.M
Last changed   : 2017-08-31 08:28:08 by ZLL
                (modified after loading)
Catalog No     : HY-N0573 Batch#35261
                A-RP-150
=====

```

Additional Info : Peak(s) manually integrated



```

=====
                          Area Percent Report
=====

```

```

Sorted By           :      Signal
Multiplier:         :      1.0000
Dilution:           :      1.0000
Use Multiplier & Dilution Factor with ISTDs

```

Signal 1: DAD1 A, Sig=210,4 Ref=off

Peak #	RetTime [min]	Type	Width [min]	Area [mAU*s]	Height [mAU]	Area %
1	6.437	MM	0.0958	7563.81104	1315.30859	99.0086
2	6.719	MF	0.0883	28.82676	5.44203	0.3773
3	6.958	FM	0.0960	46.91007	8.14487	0.6140

```
Totals :                               7639.54787 1328.89549
```

```

=====
*** End of Report ***
=====

```