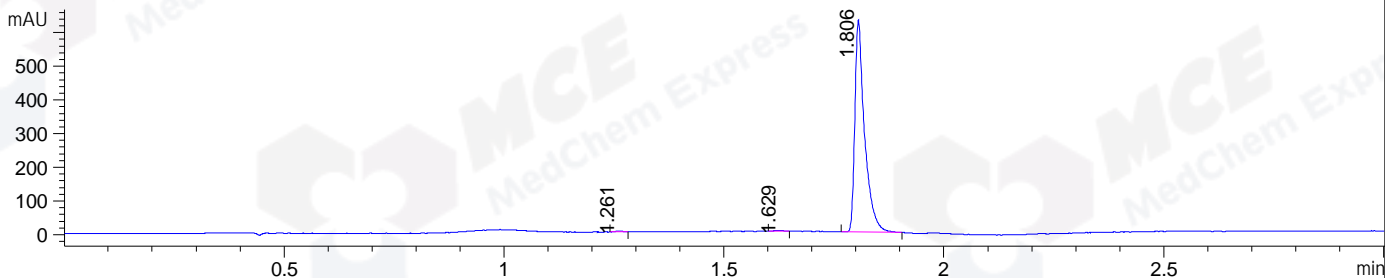
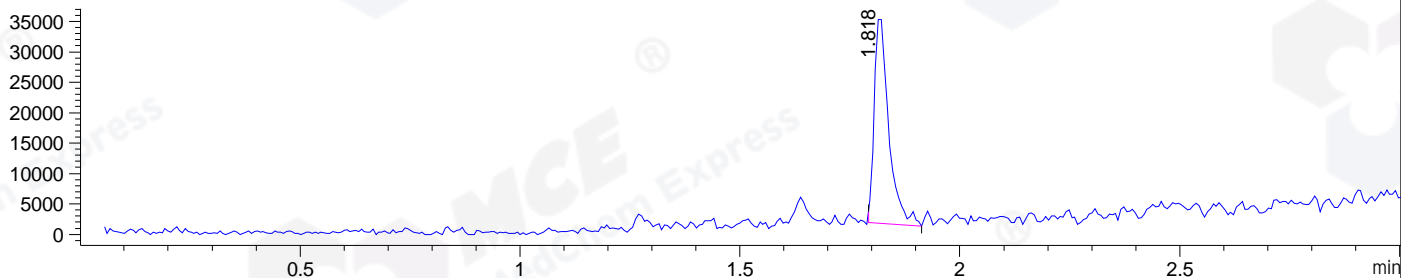


File ..1\DATA\2019\20191210\789\BIZ2019-D09-SCH4.D Tgt Mass (CHM):
 Injection Date : 10 Dec 19 10:02 am +0800 Seq. Line : 18
 Sample Name : BIZ2019-D09-SCH4 Location : P1-B-05
 Acq. Operator : ZJ_1432 Inj : 1
 Spec. Reported : MS Integration Inj Volume : 0.4 ul
 Acq. Method : D:\Chem32\1\data\2019\20191210\789\1-POS-3MIN.M
 Analysis Method : D:\CHEM32\1\DATA\2019\20191210\789\1-POS-3MIN.M
 Catalog No : HY-N0575 Batch# 57335
 Method Info : Mobile Phase: A: water(0.01%TFA) B:ACN(0.01%TFA)
 Gradient: 5% to 95%B within 1.3 min
 Flow Rate :1.8ml/min
 Column :SunFire C18, 4.6*50mm,3.5um A-RP-433
 Oven Temperature : 45

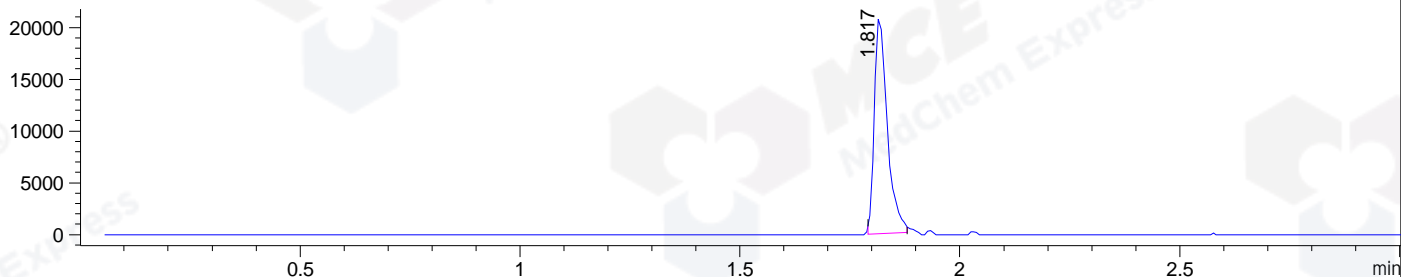
DAD1 B, Sig=214,4 Ref=off



MSD1 TIC, MS File ES-API, Pos, Scan, Frag: 70



Ion 257, MSD1 257, Target Mass 256 +H Positive, EIC=256.7:257.7



Integration Results for DAD1 B, Sig=214,4 Ref=off

RetTim	Width	Area	Height	Area%	MS (+)
1.26	0.02	2.20	2.11	0.23	ND
1.63	0.02	4.37	2.94	0.45	ND
1.81	0.03	965.83	629.63	99.32	257

Integration Results for MSD1 TIC, MS File

RetTim	Width	Area	Height	Area%	MS (+)
1.82	0.03	77572.23	34440.84	100.00	257

Ret. Time: 1.82

<<<< POSITIVE SPECTRA >>>>

ES-API Positive

