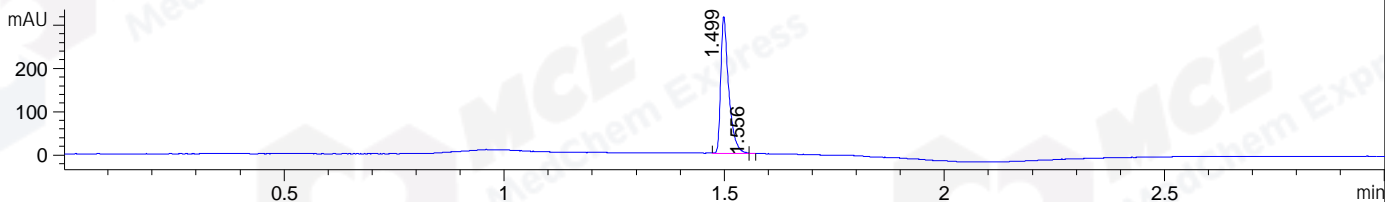
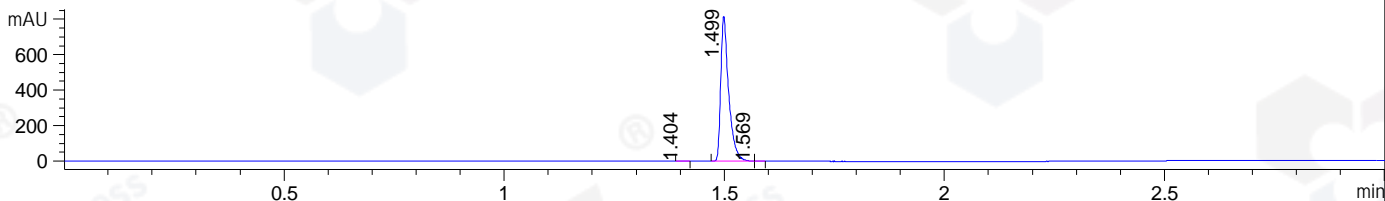


File ..\DATA\2019\20190910\713\CPK2019-909-24279.D Tgt Mass (CHM):
 Injection Date : 10 Sep 19 1:08 pm +0800 Seq. Line : 23
 Sample Name : CPK2019-909-24279 Location : P1-C-02
 Acq. Operator : bgd_1571 Inj : 1
 Spec. Reported : MS Integration Inj Volume : 1 ul
 Acq. Method : D:\Chem32\1\data\2019\20190910\713\1-POS-3MIN.M
 Analysis Method : D:\CHEM32\1\DATA\2019\20190910\713\1-POS-3MIN.M
 Catalog No : HY-N0583 Batch#24279
 Method Info : Mobile Phase: A: water(0.01%TFA) B:ACN(0.01%TFA)
 Gradient: 5% to 95%B within 1.3 min
 Flow Rate :1.8ml/min
 Column :SunFire C18, 4.6*50mm,3.5um A-RP-433
 Oven Temperature : 45

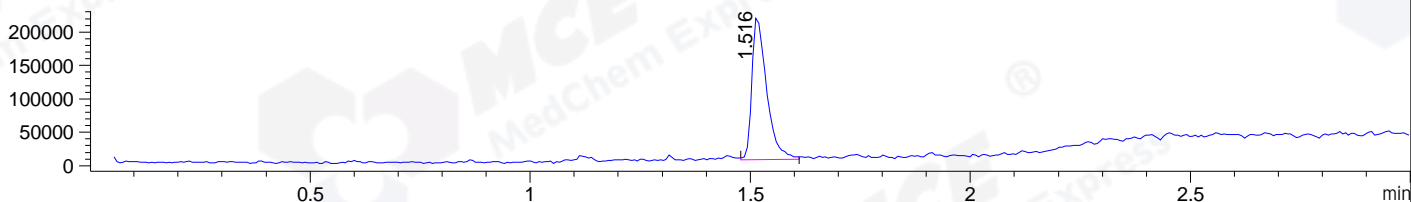
DAD1 B, Sig=214,4 Ref=off



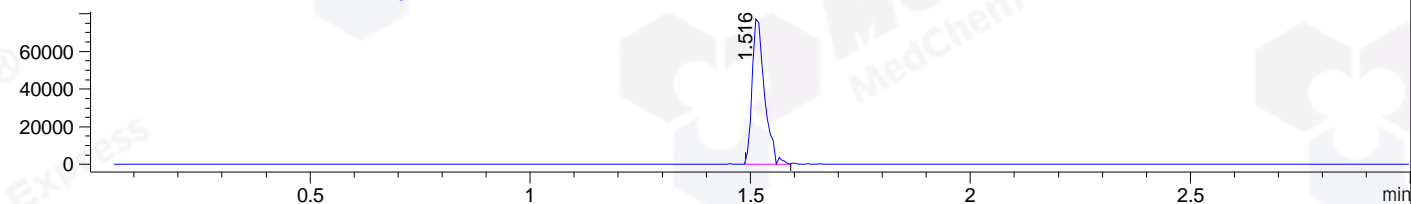
DAD1 C, Sig=254,4 Ref=off



MSD1 TIC, MS File ES-API, Pos, Scan, Frag: 70



Ion 363.4703, MSD1 363.4703, Target Mass 362.4703 +H Positive, EIC=363.17:364.17



Integration Results for DAD1 B, Sig=214,4 Ref=off

RetTim	Width	Area	Height	Area%	MS (+)
1.50	0.02	395.21	316.27	99.90	363
1.56	0.01	0.38	0.74	0.10	747

Integration Results for DAD1 C, Sig=254,4 Ref=off

RetTim	Width	Area	Height	Area%	MS (+)
1.40	0.02	1.74	1.77	0.17	141
1.50	0.02	1017.63	816.67	99.81	363
1.57	0.01	0.24	0.37	0.02	141

Integration Results for MSD1 TIC, MS File

RetTim	Width	Area	Height	Area%	MS (+)
1.52	0.03	499972.72	217197.45	100.00	363

Ret. Time: 1.52

<<<< POSITIVE SPECTRA >>>>

ES-API Positive

