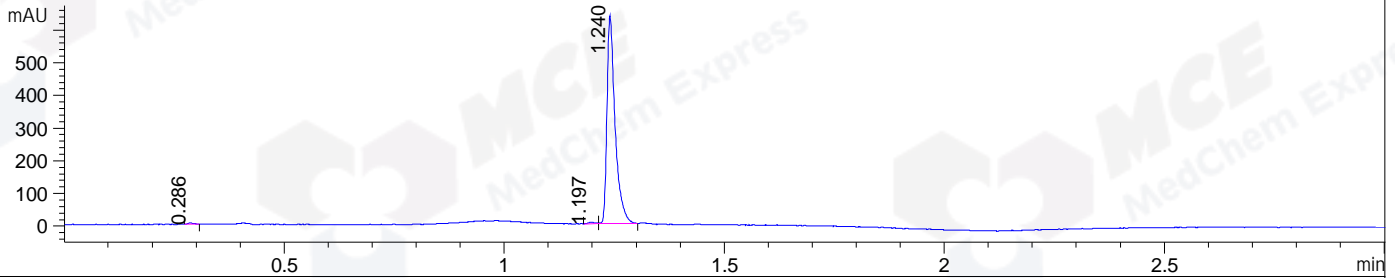
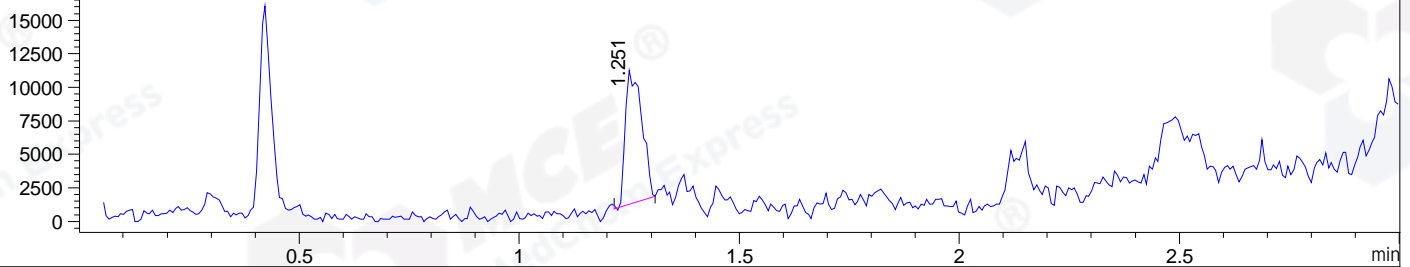


File ..\DATA\2019\20191223\793\BIZ2019-D20-SCH6-.D Tgt Mass (CHM):  
 Injection Date : 23 Dec 19 3:25 pm +0800 Seq. Line : 84  
 Sample Name : BIZ2019-D20-SCH6 Location : P1-A-06  
 Acq. Operator : ZJ\_1432 Inj : 1  
 Spec. Reported : MS Integration Inj Volume : 0.5 ul  
 Acq. Method : D:\Chem32\1\data\2019\20191223\793\1-POS-3MIN.M  
 Analysis Method : D:\CHEM32\1\DATA\2019\20191223\793\1-POS-3MIN.M  
 CAS NO. : 13463-28-0  
 Method Info : Mobile Phase: A: water(0.01%TFA) B:ACN(0.01%TFA)  
 Gradient: 5% to 95%B within 1.3 min  
 Flow Rate :1.8ml/min  
 Column :SunFire C18, 4.6\*50mm,3.5um A-RP-433  
 Oven Temperature : 45

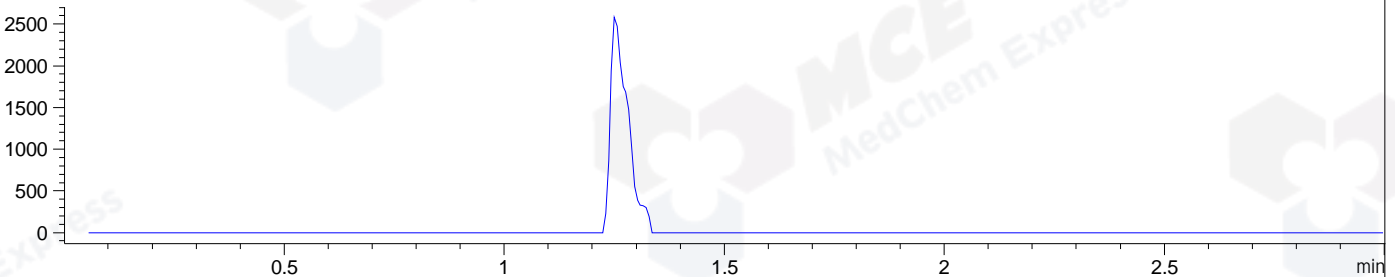
DAD1 B, Sig=214,4 Ref=off



MSD1 TIC, MS File ES-API, Pos, Scan, Frag: 70



Ion 597, MSD1 597, Target Mass 596 +H Positive, EIC=596.7:597.7



Integration Results for DAD1 B, Sig=214,4 Ref=off

RetTim	Width	Area	Height	Area%	MS (+)
0.29	0.02	4.19	4.44	0.51	ND
1.20	0.02	5.88	4.48	0.71	ND
1.24	0.02	816.80	635.75	98.78	435

Integration Results for MSD1 TIC, MS File

RetTim	Width	Area	Height	Area%	MS (+)
1.25	0.04	25885.80	10039.98	100.00	435

Ret. Time: 1.25

<<<< POSITIVE SPECTRA >>>>

ES-API Positive

