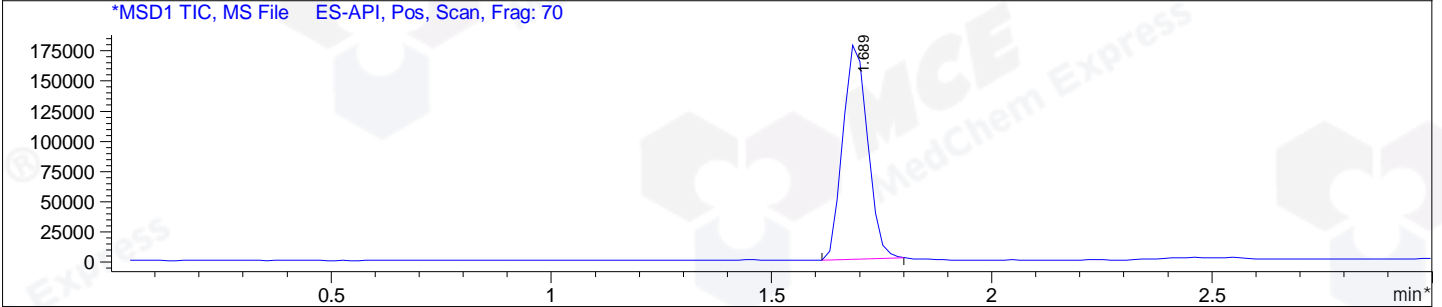
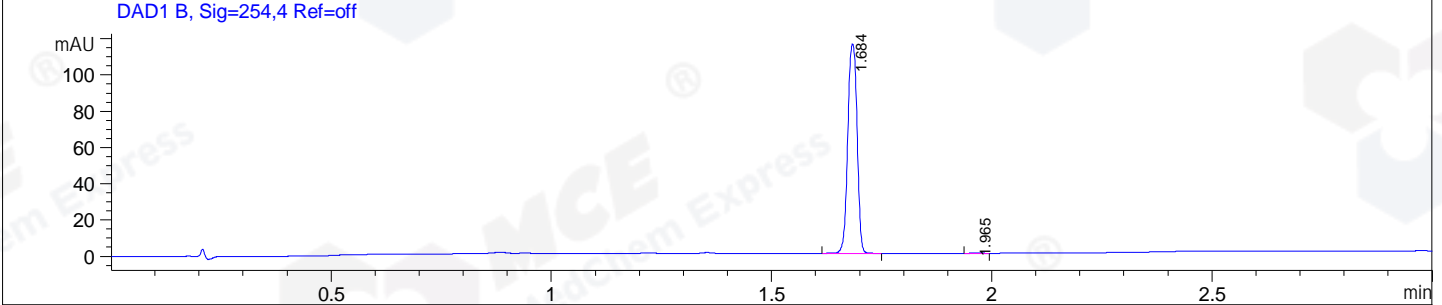
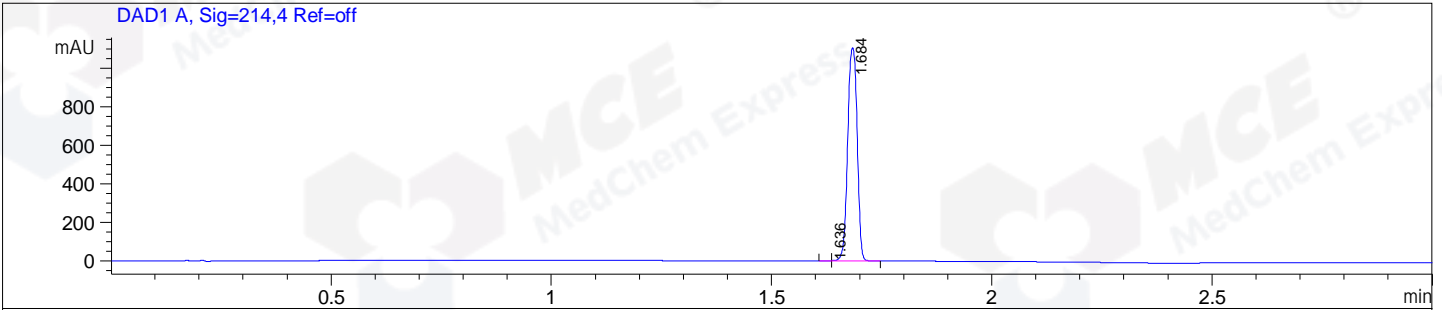


File E:\ChemStation\1\DATA\2023\2023-07\2023-07-19\CPK2023-719-65571-UPLC-MS-10-008379.D  
 Injection Date : 19-Jul-23, 18:18:32 Tgt Mass(EZX) :  
 Sample Name : CPK2023-719-65571 Location : P2-A-08  
 Acq. Operator : LY\_2278 Inj : 1  
 Spec. Reported : MS Integration Inj Volume : 1 ul  
 Acq. Method : E:\ChemStation\1\Methods\1-POS-UPLC3.0MIN(1.2)(150-1000).M  
 Analysis Method : E:\CHEMSTATION\1\METHODS\1-POS-UPLC3.0MIN(1.2)(150-1000).M  
 CAS NO. : 31008-19-2 WalkUp method: '1-POS-3MIN' Project: CPK2023  
 Method Info : Mobile Phase: A: water(0.01%TFA) B:ACN(0.01%TFA)  
 Gradient: 5% to 95%B within 2.0 min  
 Flow Rate :1.2ml/min  
 Column :Shim-pack Scepter C18-120, 3.0\*33mm,3um  
 Oven Temperature : 45C



Integration Results for DAD1 A, Sig=214,4 Ref=off

RetTim	Width	Area	Height	Area%
1.64	0.01	1.44	1.69	0.09
1.68	0.02	1656.78	1106.81	99.91

Integration Results for DAD1 B, Sig=254,4 Ref=off

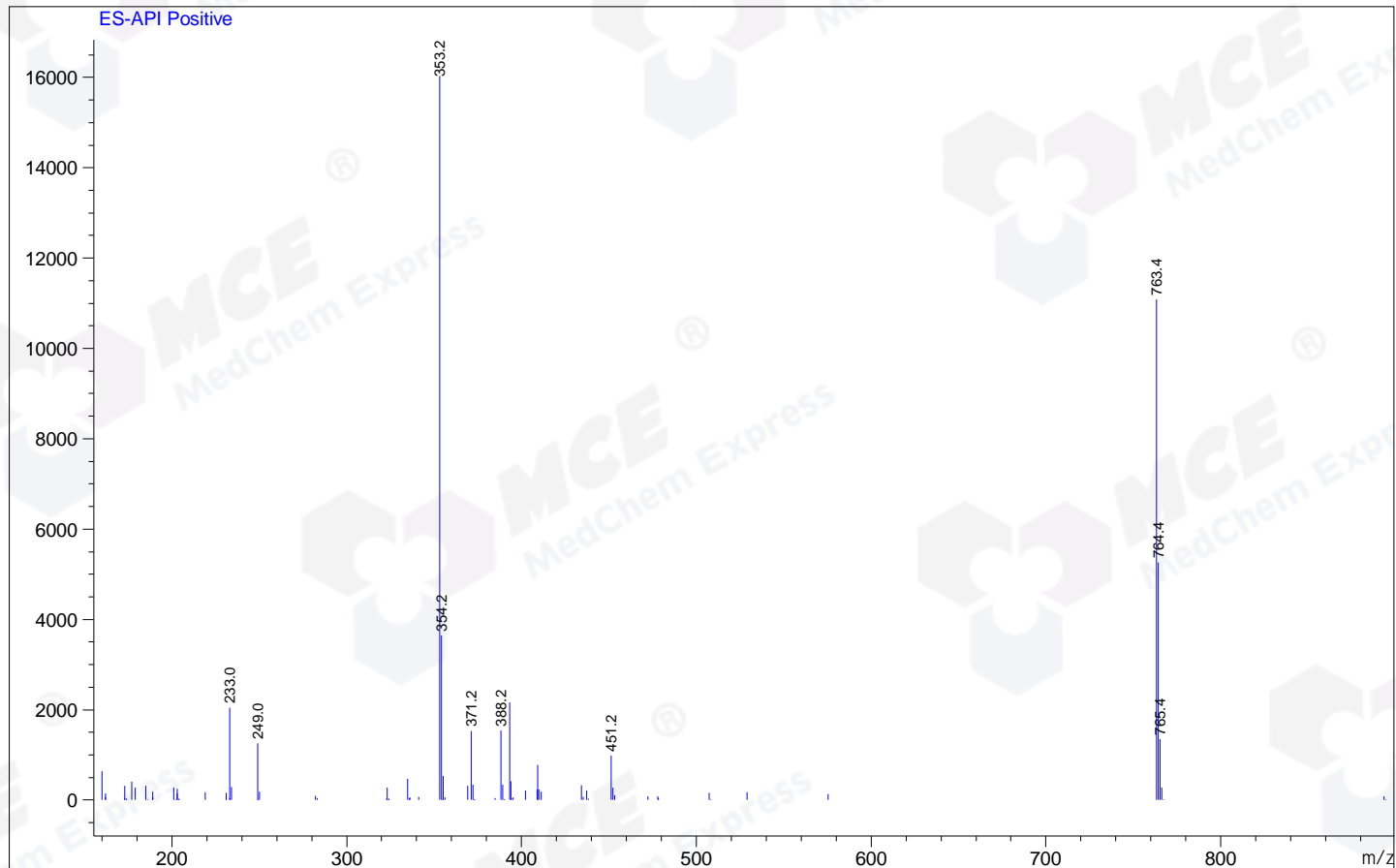
RetTim	Width	Area	Height	Area%
1.68	0.02	169.68	115.49	99.84
1.97	0.02	0.27	0.16	0.16

Integration Results for MSD1 TIC, MS File

RetTim	Width	Area	Height	Area%
1.69	0.06	694853.25	183390.30	100.00

Ret. Time: 1.69

<<<< POSITIVE SPECTRA >>>>



\*\*\* End of Report \*\*\*