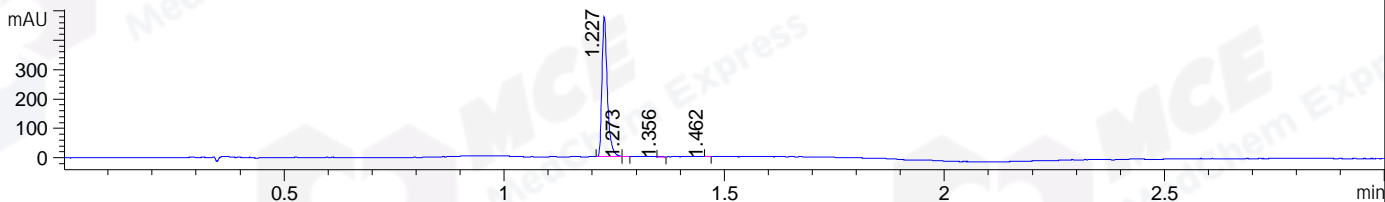
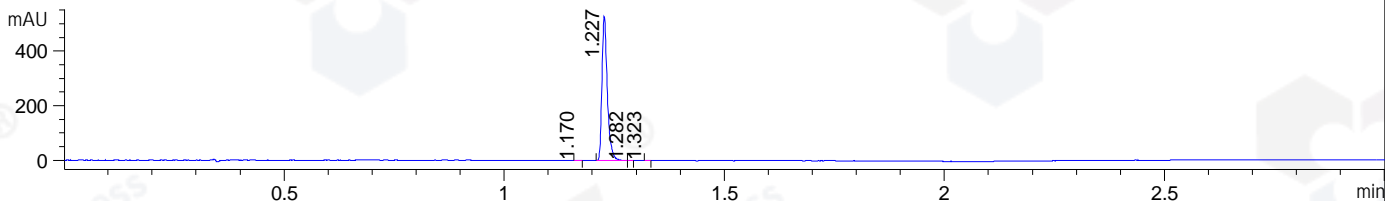


File ..DATA\2020\20200429\942\CPK2020-428-24698-.D Tgt Mass (CHM):
Injection Date : 29 Apr 20 4:45 pm +0800 Seq. Line : 85
Sample Name : CPK2020-428-24698 Location : P1-B-02
Acq. Operator : ZJ_1432 Inj : 1
Spec. Reported : MS Integration Inj Volume : 2 ul
Acq. Method : D:\Chem32\1\data\2020\20200429\942\1-POS-3MIN.M
Analysis Method : D:\CHEM32\1\DATA\2020\20200429\942\1-POS-3MIN.M
Catalog No : HY-N0758
Method Info : Mobile Phase: A: water(0.01%TFA) B:ACN(0.01%TFA)
Gradient: 5% to 95%B within 1.3 min
Flow Rate :1.8ml/min
Column :SunFire C18, 4.6*50mm,3.5um A-RP-607
Oven Temperature : 45□

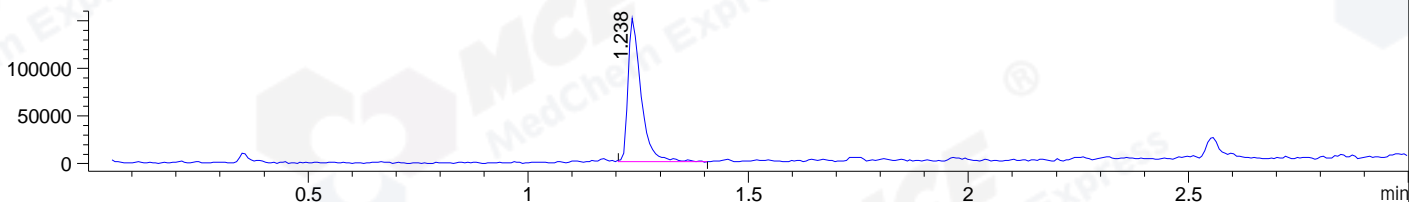
DAD1 B, Sig=214,4 Ref=off



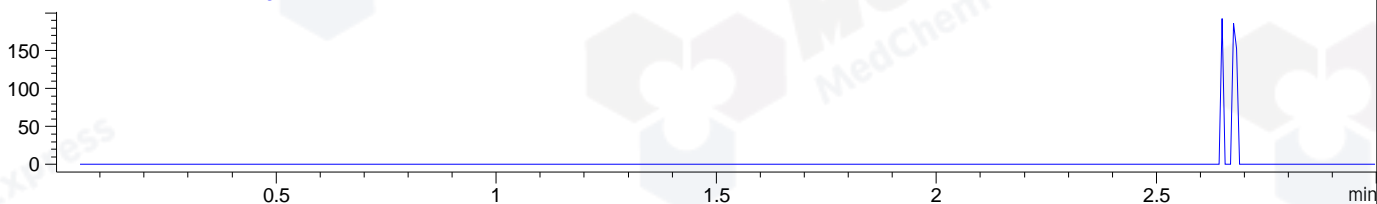
DAD1 C, Sig=254,4 Ref=off



MSD1 TIC, MS File ES-API, Pos, Scan, Frag: 70



Ion 449, MSD1 449, Target Mass 448 +H Positive, EIC=448.7:449.7



Integration Results for DAD1 B, Sig=214,4 Ref=off

RetTim	Width	Area	Height	Area%	MS (+)
1.23	0.01	404.88	477.29	99.52	191
1.27	0.01	0.73	1.13	0.18	471
1.36	0.01	0.76	1.16	0.19	ND
1.46	0.01	0.47	1.05	0.12	ND

Integration Results for DAD1 C, Sig=254,4 Ref=off

RetTim	Width	Area	Height	Area%	MS (+)
1.17	0.01	0.40	0.68	0.09	ND
1.23	0.01	447.05	529.09	99.82	191
1.28	0.01	0.21	0.35	0.05	471
1.32	0.01	0.20	0.42	0.05	ND

Integration Results for MSD1 TIC, MS File

RetTim	Width	Area	Height	Area%	MS (+)
1.24	0.03	311474.16	150686.66	100.00	191

Ret. Time: 1.24

<<<< POSITIVE SPECTRA >>>>

