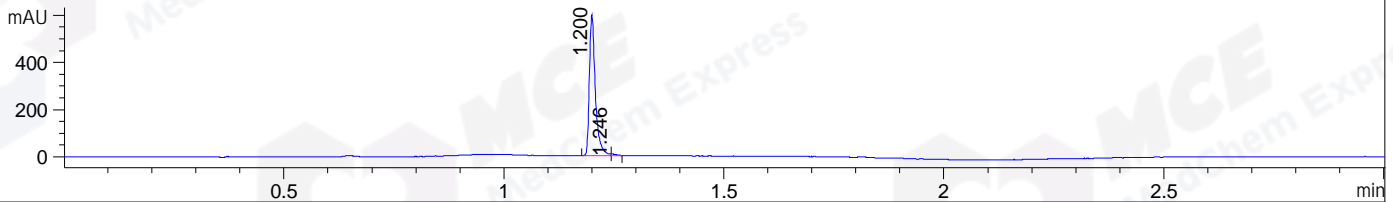
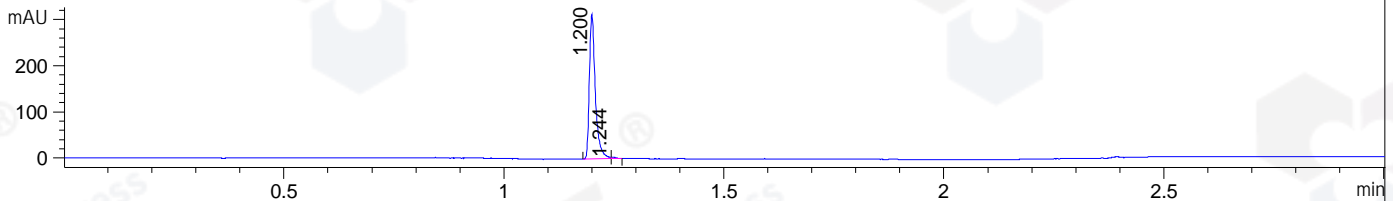


File ..DATA\2020\20200413\922\CPK2020-410-25753-.D Tgt Mass (CHM):
 Injection Date : 13 Apr 20 1:21 pm +0800 Seq. Line : 53
 Sample Name : CPK2020-410-25753 Location : P1-B-09
 Acq. Operator : ZJ_1432 Inj : 1
 Spec. Reported : MS Integration Inj Volume : 0.4 ul
 Acq. Method : D:\Chem32\1\data\2020\20200413\922\1-POS-3MIN.M
 Analysis Method : D:\CHEM32\1\DATA\2020\20200413\922\1-POS-3MIN.M
 Catalog No : HY-N0767 Batch# 25753
 Method Info : Mobile Phase: A: water(0.01%TFA) B:ACN(0.01%TFA)
 Gradient: 5% to 95%B within 1.3 min
 Flow Rate :1.8ml/min
 Column :SunFire C18, 4.6*50mm,3.5um A-RP-433
 Oven Temperature : 45

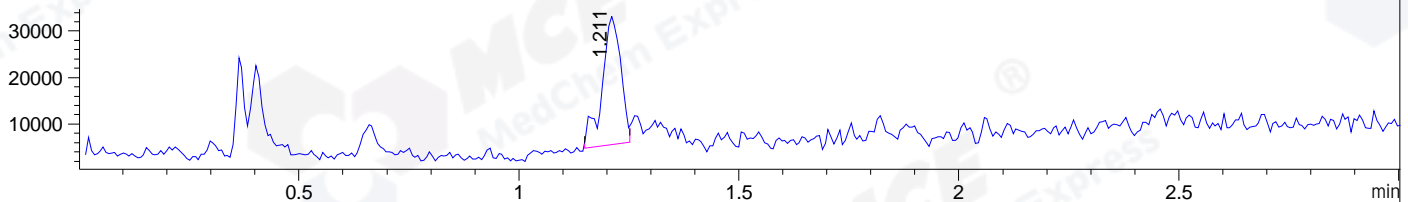
DAD1 B, Sig=214,4 Ref=off



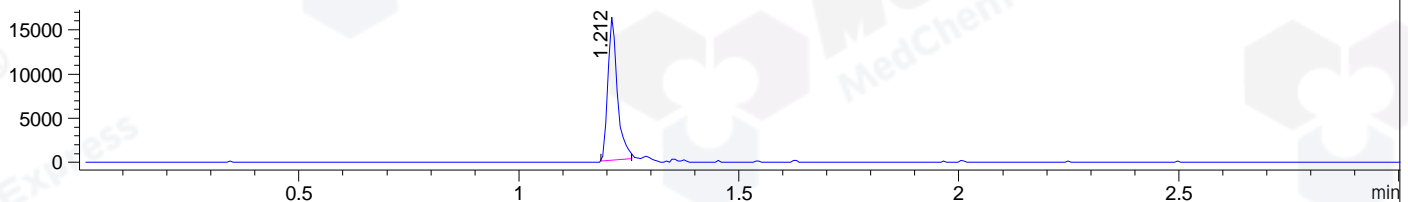
DAD1 C, Sig=254,4 Ref=off



MSD1 TIC, MS File ES-API, Pos, Scan, Frag: 70



Ion 449, MSD1 449, Target Mass 448 +H Positive, EIC=448.7:449.7



Integration Results for DAD1 B, Sig=214,4 Ref=off

RetTim	Width	Area	Height	Area%	MS (+)
1.20	0.02	560.36	598.15	99.26	449
1.25	0.01	4.16	5.94	0.74	238

Integration Results for DAD1 C, Sig=254,4 Ref=off

RetTim	Width	Area	Height	Area%	MS (+)
1.20	0.02	293.99	313.70	99.38	449
1.24	0.01	1.83	3.05	0.62	238

Integration Results for MSD1 TIC, MS File

RetTim	Width	Area	Height	Area%	MS (+)
1.21	0.04	81514.89	27710.51	100.00	449

Ret. Time: 1.21

<<<< POSITIVE SPECTRA >>>>

