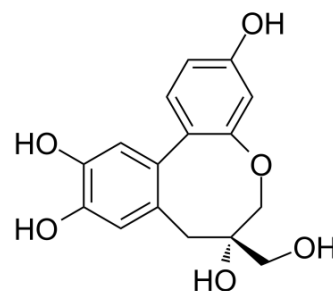


## Protosappanin B

Cat. No.:	HY-N0800
CAS No.:	102036-29-3
Molecular Formula:	C <sub>16</sub> H <sub>16</sub> O <sub>6</sub>
Molecular Weight:	304.29
Target:	Apoptosis
Pathway:	Apoptosis
Storage:	Please store the product under the recommended conditions in the COA.



### BIOLOGICAL ACTIVITY

<b>Description</b>	Protosappanin B is a phenolic compound extracted from Lignum Sappan. Anti-cancer activity <sup>[1]</sup> . Protosappanin B induces apoptosis and causes G <sub>1</sub> cell cycle arrest in human bladder cancer cells <sup>[2]</sup> .	
<b>IC<sub>50</sub> &amp; Target</b>	Apoptosis <sup>[2]</sup>	
<b>In Vitro</b>	Protosappanin B (12.5, 25, 50, 100, 200 µg/mL, 48 hours) dose-dependently inhibits tumor cells, with IC <sub>50</sub> s of 21.32 µg/mL, 26.73 µg/mL, and 76.53 µg/mL for SW-480, HCT-116, and BTT cells, respectively <sup>[1]</sup> .	
	<b>Cell Viability Assay<sup>[1]</sup></b>	
	<b>Cell Line:</b>	CT-116, SW-480, and BTT Cells
	<b>Concentration:</b>	12.5, 25, 50, 100, 200 µg/mL
	<b>Incubation Time:</b>	48 hours
	<b>Result:</b>	Dose-dependently inhibited tumor cells after 48 hours of treatment.

### REFERENCES

- [1]. Yang X, et al. Antitumor Effects of Purified Protosappanin B Extracted From Lignum Sappan. *Integr Cancer Ther.* 2016 Mar;15(1):87-95.
- [2]. Yang X, et al. Protosappanin B promotes apoptosis and causes G<sub>1</sub> cell cycle arrest in human bladder cancer cells. *Sci Rep.* 2019 Jan 31;9(1):1048.

**Caution: Product has not been fully validated for medical applications. For research use only.**

Tel: 609-228-6898

Fax: 609-228-5909

E-mail: tech@MedChemExpress.com

Address: 1 Deer Park Dr, Suite Q, Monmouth Junction, NJ 08852, USA