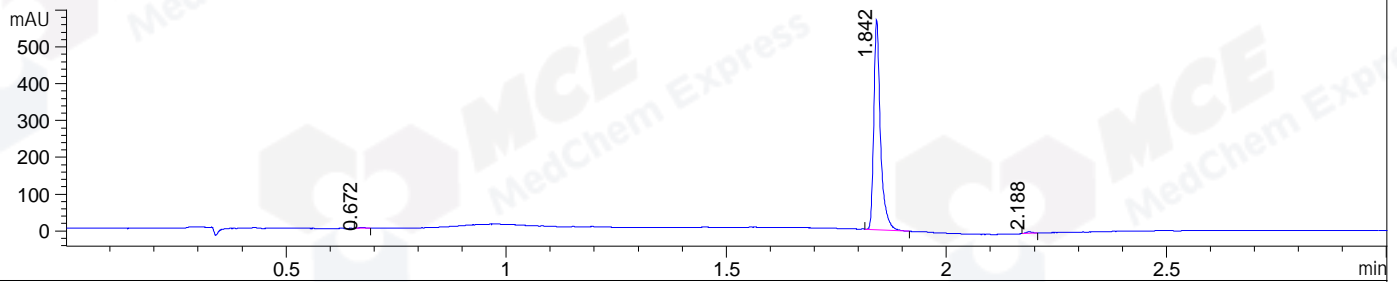
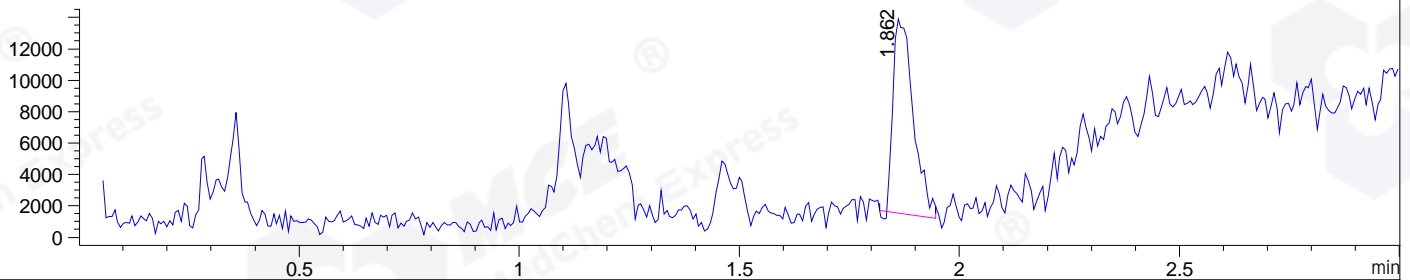


File ..\DATA\2020\20200518\963\BIZ2020-515-CXL4.D Tgt Mass (CHM):  
Injection Date : 18 May 20 5:23 pm +0800 Seq. Line : 72  
Sample Name : BIZ2020-515-CXL4 Location : P1-D-07  
Acq. Operator : ZJ\_1432 Inj : 1  
Spec. Reported : MS Integration Inj Volume : 4 ul  
Acq. Method : D:\Chem32\1\data\2020\20200518\963\1-POS-3MIN.M  
Analysis Method : D:\CHEM32\1\DATA\2020\20200518\963\1-POS-3MIN.M  
Catalog No : HY-N0802  
Method Info : Mobile Phase: A: water(0.01%TFA) B:ACN(0.01%TFA)  
Gradient: 5% to 95%B within 1.3 min  
Flow Rate :1.8ml/min  
Column :SunFire C18, 4.6\*50mm,3.5um A-RP-607  
Oven Temperature : 45

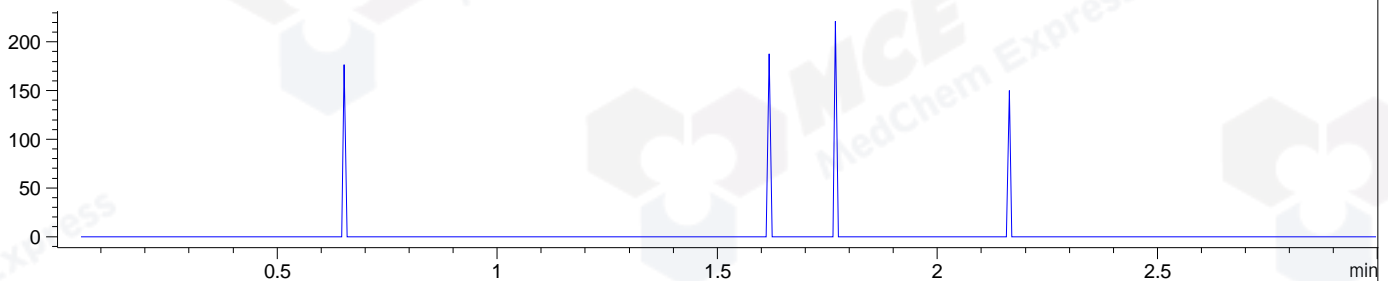
DAD1 B, Sig=214,4 Ref=off



MSD1 TIC, MS File ES-API, Pos, Scan, Frag: 70



Ion 537, MSD1 537, Target Mass 536 +H Positive, EIC=536.7:537.7



Integration Results for DAD1 B, Sig=214,4 Ref=off

RetTim	Width	Area	Height	Area%	MS (+)
0.67	0.02	1.58	1.70	0.26	ND
1.84	0.02	602.74	570.86	99.24	501
2.19	0.01	3.03	3.50	0.50	ND

Integration Results for MSD1 TIC, MS File

RetTim	Width	Area	Height	Area%	MS (+)
1.86	0.04	39191.34	12390.85	100.00	ND

MS Spectrum

MSD1 SPC, time=1.874 of D:\CHEM32\1\DATA\2020\20200518\963\BIZ2020-515-CXL4-.D ES-API, Pos, Scan, Frag: 70

