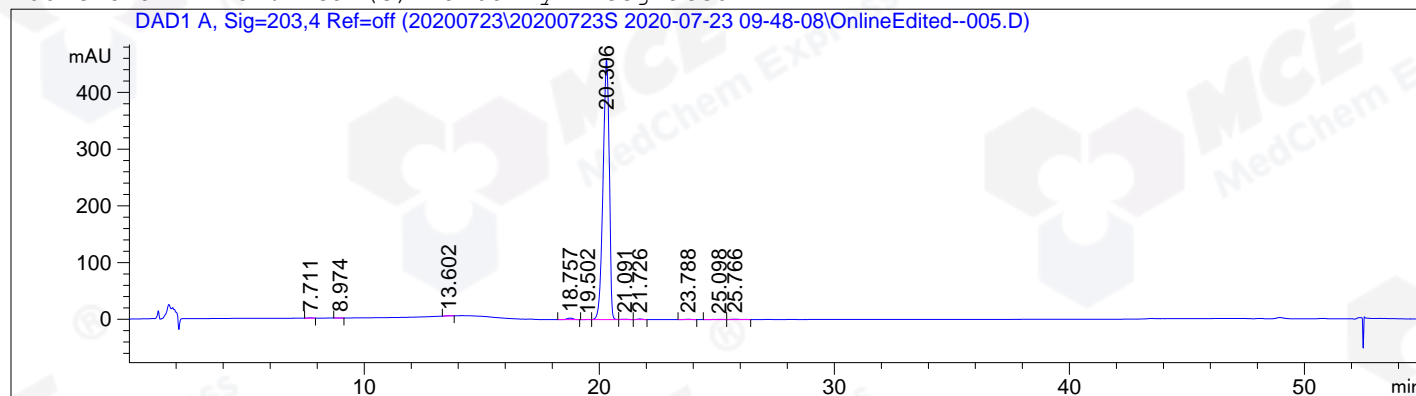


=====
Acq. Operator : zqq_793 Seq. Line : 5
Acq. Instrument : HPLC-12 Location : 43
Injection Date : 7/23/2020 13:33:25 Inj : 1
Inj Volume : 20.000 µl
Acq. Method : D:\Chem32\1\Data\20200723\20200723S 2020-07-23 09-48-08\HY-N0816-H01P01 (RP-
HPLC).M
Last changed : 7/23/2020 9:48:08 by zqq_793
Analysis Method : D:\Chem32\1\Data\20200723\20200723S 2020-07-23 09-48-08\HY-N0816-H01P01 (RP-
HPLC).M (Sequence Method)
Last changed : 7/23/2020 14:33:26 by zqq_793
(modified after loading)
Catalog No : HY-N0816 A-RP-536

Additional Info : Peak(s) manually integrated



=====
Area Percent Report
=====

Sorted By : Signal
Multiplier : 1.0000
Dilution : 1.0000
Do not use Multiplier & Dilution Factor with ISTDs

Signal 1: DAD1 A, Sig=203,4 Ref=off

Peak #	RetTime [min]	Type	Width [min]	Area [mAU*s]	Height [mAU]	Area %
1	7.711	MM	0.2176	7.39041	5.66109e-1	0.0861
2	8.974	MM	0.2085	1.58784	1.26902e-1	0.0185
3	13.602	MM	0.2552	6.57262	4.29322e-1	0.0766
4	18.757	BB	0.2837	49.47796	2.75254	0.5768
5	19.502	MF	0.2864	6.13577	3.57102e-1	0.0715
6	20.306	MF	0.3062	8436.43359	459.15359	98.3425
7	21.091	MF	0.3680	17.31508	7.84259e-1	0.2018
8	21.726	FM	0.2874	19.25695	1.11681	0.2245
9	23.788	MM	0.3332	11.15370	5.57958e-1	0.1300
10	25.098	MF	0.4901	9.74936	3.31531e-1	0.1136
11	25.766	FM	0.4756	13.54970	4.74839e-1	0.1579

Totals : 8578.62298 466.65096

=====
*** End of Report ***