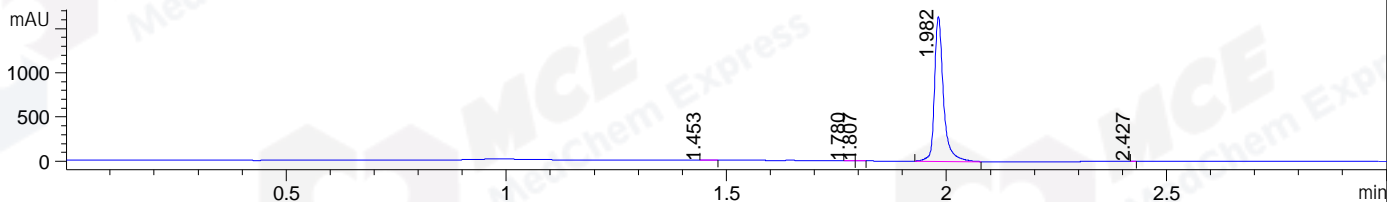
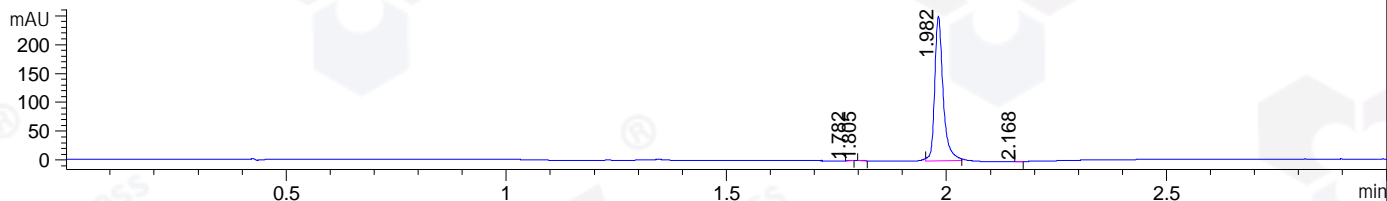


File ..1\DATA\2019\20190318\556\BIZ2019-315-WYQ8.D Tgt Mass (CHM):
 Injection Date : 18 Mar 19 12:13 pm +0800 Seq. Line : 31
 Sample Name : BIZ2019-315-WYQ8 Location : P2-D-09
 Acq. Operator : LQ_1052 Inj : 1
 Spec. Reported : MS Integration Inj Volume : 1 ul
 Acq. Method : D:\Chem32\1\data\2019\20190318\556\1-POS-3MIN-1.M
 Analysis Method : D:\CHEM32\1\DATA\2019\20190318\556\1-POS-3MIN-1.M
 Catalog No : HY-N0822 Batch#39014
 Method Info : Mobile Phase: A: water(0.01%TFA) B:ACN(0.01%TFA)
 Gradient: 5% to 95%B within 1.3 min
 Flow Rate :1.8ml/min
 Column :SunFire C18, 4.6*50mm,3.5um A-RP-314
 Oven Temperature : 45□

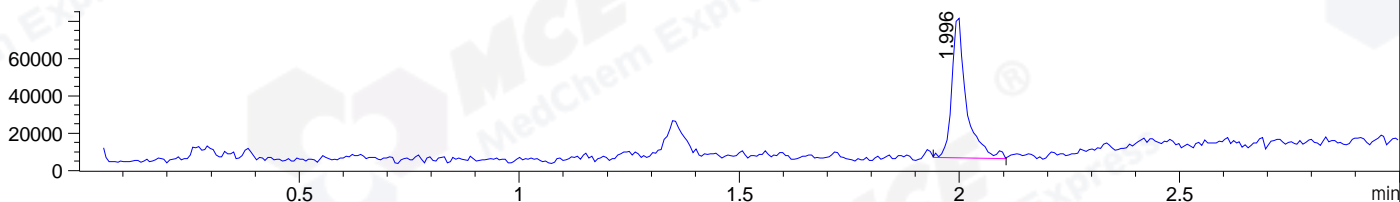
DAD1 B, Sig=214,4 Ref=off



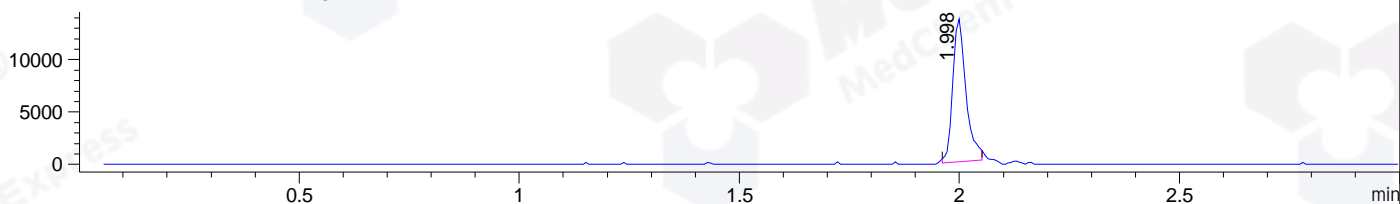
DAD1 C, Sig=254,4 Ref=off



MSD1 TIC, MS File ES-API, Pos, Scan, Frag: 70



Ion 289.1, MSD1 289.1, Target Mass 288.1 +H Positive, EIC=288.8:289.8



Integration Results for DAD1 B, Sig=214,4 Ref=off

RetTim	Width	Area	Height	Area%	MS (+)
1.45	0.02	1.81	1.40	0.08	ND
1.78	0.02	1.18	1.22	0.05	ND
1.81	0.02	1.34	1.20	0.06	ND
1.98	0.02	2347.53	1643.13	99.80	271
2.43	0.01	0.27	0.54	0.01	142

Integration Results for DAD1 C, Sig=254,4 Ref=off

RetTim	Width	Area	Height	Area%	MS (+)
1.78	0.01	0.21	0.26	0.06	ND
1.81	0.01	0.24	0.28	0.07	ND
1.98	0.02	333.36	250.49	99.82	271
2.17	0.01	0.15	0.17	0.04	142

Integration Results for MSD1 TIC, MS File

RetTim	Width	Area	Height	Area%	MS (+)
--------	-------	------	--------	-------	--------

2.00 0.03 172416.44 76729.53 100.00 271

Ret. Time: 2.00

<<<< POSITIVE SPECTRA >>>>

ES-API Positive

