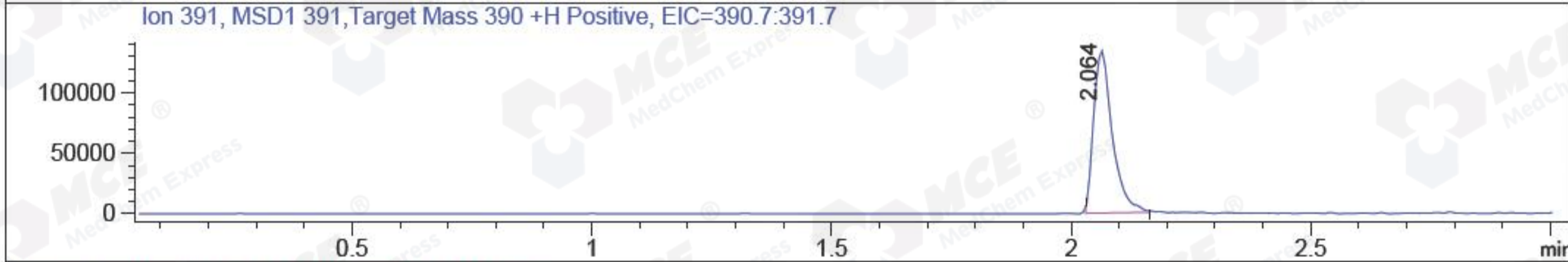
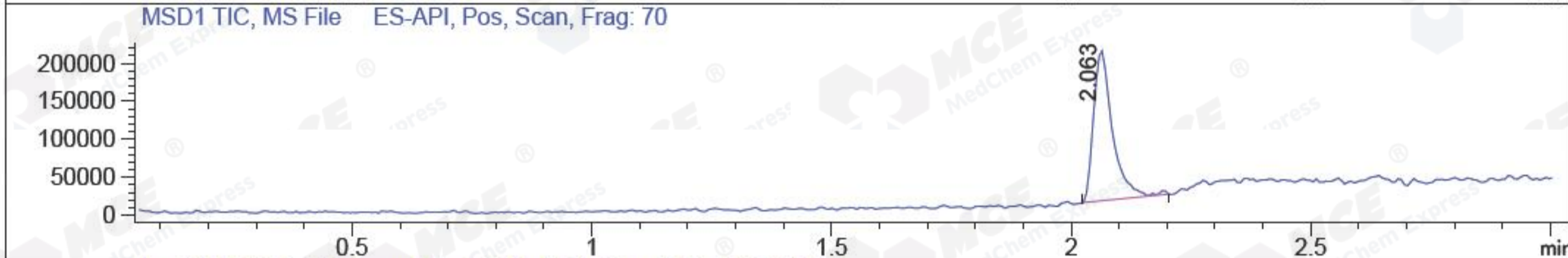
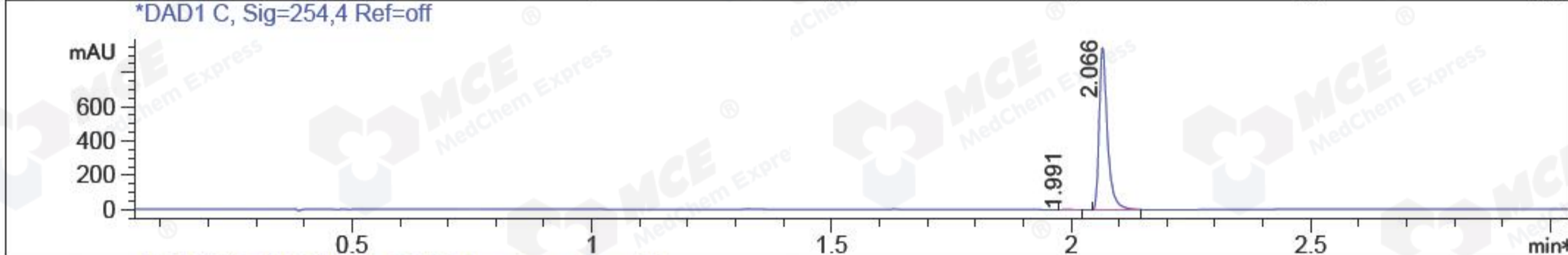
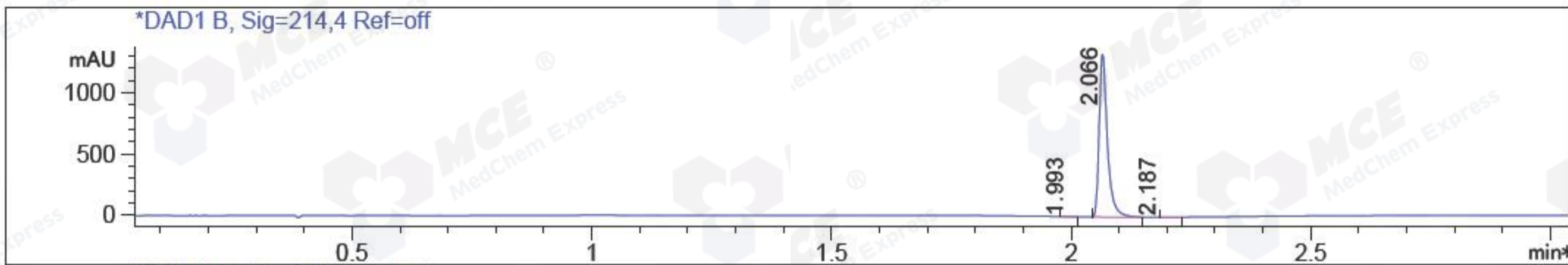


File D:\CHEM32\1\DATA\BIZ\BIZ2016-N14-WJ4.D Tgt Mass (EZX): 390.00  
 Injection Date : 14 Nov 16 3:04 pm +0800 Seq. Line : 0  
 Sample Name : BIZ2016-N14-WJ4 Location : P2-A-07  
 Acq. Operator : KFF(LCMS-02) Inj : 1  
 Spec. Reported : MS Integration Inj Volume : 1 ul  
 Acq. Method : D:\Chem32\1\METHODS\1-POS-3MIN.M  
 Analysis Method : D:\CHEM32\1\METHODS\1-POS-3MIN-PROSRSS.M  
 Catalog No : HY-N0897 Batch#22447 Easy-Access Method: '1-POS-3MIN' 390.00  
 Method Info : Mobile Phase: A: water(0.01%TFA) B:ACN(0.01%TFA)  
 Gradient: 5% to 95%B within 1.3 min  
 Flow Rate :1.8ml/min  
 Column :SunFire C18, 4.6\*50mm,3.5um A-RP-186  
 Oven Temperature : 45C



Integration Results for DAD1 B, Sig=214,4 Ref=off

RetTim	Width	Area	Height	Area%	MS (+)
1.99	0.03	2.23	1.44	0.14	233
2.07	0.02	1591.38	1326.10	99.75	391
2.19	0.05	1.75	0.85	0.11	233

Integration Results for DAD1 C, Sig=254,4 Ref=off

RetTim	Width	Area	Height	Area%	MS (+)
1.99	0.02	3.10	2.10	0.27	233
2.07	0.02	1138.81	946.94	99.73	391

Ret. Time: 2.06

<<<< POSITIVE SPECTRA >>>>

