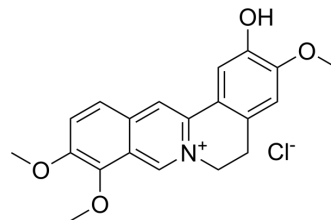


## Columbamine chloride

Cat. No.:	HY-N0926A
CAS No.:	1916-10-5
Molecular Formula:	C <sub>20</sub> H <sub>20</sub> ClNO <sub>4</sub>
Molecular Weight:	373.83
Target:	Others
Pathway:	Others
Storage:	4°C, protect from light * In solvent : -80°C, 6 months; -20°C, 1 month (protect from light)



### SOLVENT & SOLUBILITY

#### In Vitro

DMSO : 5 mg/mL (13.38 mM; ultrasonic and warming and heat to 60°C)

Concentration	Mass			
	1 mg	5 mg	10 mg	
1 mM	2.6750 mL	13.3751 mL	26.7501 mL	
5 mM	0.5350 mL	2.6750 mL	5.3500 mL	
10 mM	0.2675 mL	1.3375 mL	2.6750 mL	

Please refer to the solubility information to select the appropriate solvent.

### BIOLOGICAL ACTIVITY

#### Description

Columbamine (Columbamin; Dehydroisocorypalmine) chloride is an alkaloid<sup>[1]</sup>.

### REFERENCES

[1]. Wang W, et al. A series of strategies for solving the shortage of reference standards for multi-components determination of traditional Chinese medicine, Mahoniae Caulis as a case. J Chromatogr A. 2015 Sep 18;1412:100-11.

**Caution: Product has not been fully validated for medical applications. For research use only.**

Tel: 609-228-6898

Fax: 609-228-5909

E-mail: tech@MedChemExpress.com

Address: 1 Deer Park Dr, Suite Q, Monmouth Junction, NJ 08852, USA