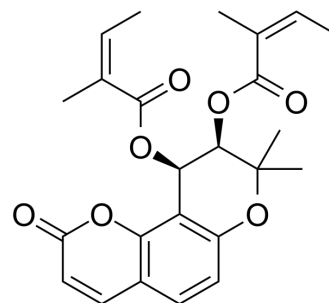


## (-)-Anomalin

|                           |  |
|---------------------------|--|
| <b>Cat. No.:</b>          | HY-N0947   |
| <b>CAS No.:</b>           | 4970-26-7  |
| <b>Molecular Formula:</b> | C <sub>24</sub> H <sub>26</sub> O <sub>7</sub>   |
| <b>Molecular Weight:</b>  | 426.46   |
| <b>Target:</b>            | Others   |
| <b>Pathway:</b>           | Others   |
| <b>Storage:</b>           | 4°C, protect from light<br>* In solvent : -80°C, 6 months; -20°C, 1 month (protect from light) |



### SOLVENT & SOLUBILITY

#### In Vitro

DMSO : 100 mg/mL (234.49 mM; Need ultrasonic)

| Preparing Stock Solutions | Solvent Concentration | Mass      |            |            |
|---------------------------|-----------------------|-----------|------------|------------|
|                           |                       | 1 mg      | 5 mg       | 10 mg      |
|                           | 1 mM                  | 2.3449 mL | 11.7244 mL | 23.4489 mL |
|                           | 5 mM                  | 0.4690 mL | 2.3449 mL  | 4.6898 mL  |
|                           | 10 mM                 | 0.2345 mL | 1.1724 mL  | 2.3449 mL  |

Please refer to the solubility information to select the appropriate solvent.

#### In Vivo

- Add each solvent one by one: 10% DMSO >> 40% PEG300 >> 5% Tween-80 >> 45% saline  
Solubility: ≥ 2.5 mg/mL (5.86 mM); Clear solution
- Add each solvent one by one: 10% DMSO >> 90% (20% SBE-β-CD in saline)  
Solubility: 2.5 mg/mL (5.86 mM); Suspended solution; Need ultrasonic
- Add each solvent one by one: 10% DMSO >> 90% corn oil  
Solubility: ≥ 2.5 mg/mL (5.86 mM); Clear solution

### BIOLOGICAL ACTIVITY

#### Description

(-)-Anomalin ((-)-Praeruptorin B) is a coumarin derivative isolated from the root of *S. resinosum*<sup>[1]</sup>.

### REFERENCES

[1]. Alev Tosun, et al. Determination of Anomalin and Deltoin in *Seseli resinosum* by LC Combined with Chemometric Methods. Published: 21 September 2007

---

**Caution: Product has not been fully validated for medical applications. For research use only.**

Tel: 609-228-6898

Fax: 609-228-5909

E-mail: [tech@MedChemExpress.com](mailto:tech@MedChemExpress.com)

Address: 1 Deer Park Dr, Suite Q, Monmouth Junction, NJ 08852, USA