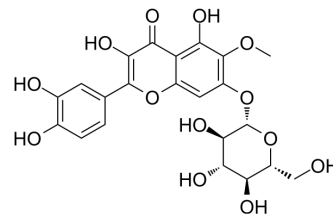


Patulitrin

Cat. No.:	HY-N10020
CAS No.:	19833-25-1
Molecular Formula:	C ₂₂ H ₂₂ O ₁₃
Molecular Weight:	494.4
Target:	Lipoxygenase
Pathway:	Metabolic Enzyme/Protease
Storage:	Please store the product under the recommended conditions in the Certificate of Analysis.



BIOLOGICAL ACTIVITY

Description

Patulitrin has scavenging effect in the DPPH radical. Patulitrin inhibits soybean lipoxygenase. Patulitrin also has antihypertensive effect. Patulitrin is an antioxidant flavonoid that can be isolated from *Anthemis tinctoria*^{[1][2]}.

REFERENCES

[1]. Papaioannou P, et al. Phenolic compounds with antioxidant activity from *Anthemis tinctoria* L. (Asteraceae). *Z Naturforsch C J Biosci.* 2007 May-Jun;62(5-6):326-30.

Caution: Product has not been fully validated for medical applications. For research use only.

Tel: 609-228-6898

Fax: 609-228-5909

E-mail: tech@MedChemExpress.com

Address: 1 Deer Park Dr, Suite Q, Monmouth Junction, NJ 08852, USA