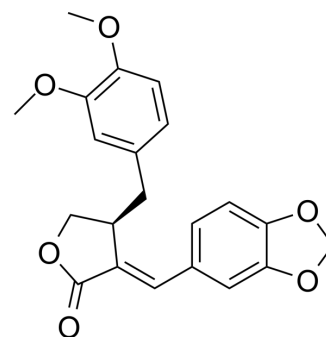


Suchilactone

Cat. No.:	HY-N10079
CAS No.:	50816-74-5
Molecular Formula:	C ₂₁ H ₂₀ O ₆
Molecular Weight:	368.38
Target:	SHP2
Pathway:	Protein Tyrosine Kinase/RTK
Storage:	Please store the product under the recommended conditions in the Certificate of Analysis.



BIOLOGICAL ACTIVITY

Description

Suchilactone (Jatrophan) is a lignan extracted from *Monsonia angustifolia* E.Mey. Suchilactone binds to SHP2 and inhibits SHP2 activation, thereby inhibiting ERK-mediated cell proliferation. Suchilactone can be used in acute myeloid leukaemia (AML)^[1].

REFERENCES

[1]. Wu J, et al. Suchilactone inhibits the growth of acute myeloid leukaemia by inactivating SHP2. *Pharm Biol.* 2022 Dec;60(1):144-153.

Caution: Product has not been fully validated for medical applications. For research use only.

Tel: 609-228-6898

Fax: 609-228-5909

E-mail: tech@MedChemExpress.com

Address: 1 Deer Park Dr, Suite Q, Monmouth Junction, NJ 08852, USA