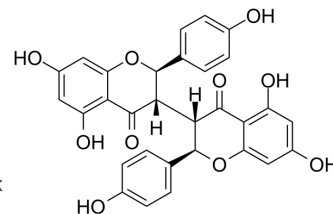


## Chamaejasmine

Cat. No.:	HY-N10093
CAS No.:	69618-96-8
Molecular Formula:	C <sub>30</sub> H <sub>22</sub> O <sub>10</sub>
Molecular Weight:	542.49
Target:	Autophagy; Apoptosis; Reactive Oxygen Species; AMPK
Pathway:	Autophagy; Apoptosis; Immunology/Inflammation; Metabolic Enzyme/Protease; NF-κ B; Epigenetics; PI3K/Akt/mTOR
Storage:	-20°C, protect from light * In solvent : -80°C, 6 months; -20°C, 1 month (protect from light)



### BIOLOGICAL ACTIVITY

#### Description

Chamaejasmine is a biflavonoid that can be isolated from the roots of *Stellera chamaejasme* L. Chamaejasmine has antitumor activity. Chamaejasmine induces cell apoptosis, autophagy and ROS production, and activates the activity of AMPK/mTOR signal pathway<sup>[1]</sup>.

### REFERENCES

[1]. Yang D, et al. The role of chamaejasmine in cellular apoptosis and autophagy in MG-63 cells. *Biosci Rep*. 2019 Jan 15;39(1):BSR20181707.

**Caution: Product has not been fully validated for medical applications. For research use only.**

Tel: 609-228-6898

Fax: 609-228-5909

E-mail: tech@MedChemExpress.com

Address: 1 Deer Park Dr, Suite Q, Monmouth Junction, NJ 08852, USA